

**BERGVILLE JUSTICE COMPLEX
UPGRADE, REPAIRS & RENOVATION
MECHANICAL WORKS**

1. SCOPE OF WORKS

These works consist of the supply, delivery, installation and commissioning of:

- 1.1.** Split Air Conditioning Equipment
- 1.2.** Ventilation Equipment
- 1.3.** Fire Booster Pump
- 1.4.** Fire Suppression System
- 1.5.** Fire Protection Equipment
- 1.6.** Recycled Water Pump

2. PARTICULAR SPECIFICATION

2.1. Site

The site for these works is Bergville, KwaZulu-Natal.

2.2. Air Conditioning Equipment

2.2.1. General

All equipment is to comply with the latest amendments of:

- a) SANS 1125: Room Air conditioners.
- b) SANS 10147: Refrigerating Systems, including plant associated with air conditioning systems.
- c) SANS 1283: Manufacture of Ducting.
- d) SANS 10173: Installation, Testing and Balancing of Ducting.
- e) SANS 1424: Air conditioning and Ventilation Filters.
- f) SANS 1287: Flexible Ducting.
- g) SANS 60335-2-40/ICE60335-2-40: Electrical Safety of Air conditioning.

Walls are to be chased for the controllers, conduits and wall boxes installed and the walls patched and made good.

Units are to be complete with drip trays which shall be mounted under the coils and properly pitched for positive drainage. They shall project under the entire length and width of the coil. PVC (blue) or other approved type drain tubing of not less than 25mm nominal bore with glued joints and supported at 1m intervals, shall be provided. Drip trays are to be easily accessible for cleaning and piped to drain.

Precautions shall be taken to prevent condensation on the outside of drip trays and piping.

The mean sound pressure levels generated by the units shall not exceed 40 dB(A) when measured at a distance of 2 metres from the units.

2.2.2. Split Units

Inverter type midwall split units, with reverse cycle heating, are to be installed as shown on the drawings, each with its own hard-wired controller.

Split type units shall consist of a direct expansion fan coil unit and a separate externally located air cooled condensing unit.

Each indoor unit must be suitable for wall mounting or ceiling suspended, and shall be operated by a separate, flush mounted hard-wired controller installed in the room, adjacent to the light switch (unless otherwise indicated). Fan speed and temperature are to be adjustable and are to be controlled by this controller.

The condensing unit shall be wall mounted on sturdy, hot dipped galvanised brackets with galvanised rawl bolts in the position specified. Rubber waffle pads are to be used to eliminate vibration between mounting brackets and the unit.

2.2.3. Technical Specification

Room air conditioners shall be completely self-contained and equipped with suitable filters, recirculation fan with a minimum of two speeds, adjustable or automatic directional air discharge vanes, direct expansion cooling coil, compressor, air cooled condenser, interconnecting refrigerant tubing, reverse cycle heating unless otherwise specified, thermostat, control panel and electric wiring.

All moving parts shall be resiliently mounted in a sturdy sheet steel casing.

All steel surfaces shall be thoroughly rust proofed in the factory and final coated with epoxy scratch-proof finish unless otherwise specified.

Condenser coils shall be constructed from copper or aluminium tubing and aluminium or copper fins as specified.

Electric terminals and connections shall be protected with mastic coating.

All units must have a drip tray and drain outlet. Slinger-ring type fans are not acceptable.

Console and window type units must have fresh air inlet vents with selector lever.

Filter elements shall be of robust construction and shall be easily removable. Filter material shall be constructed of washable synthetic fibre.

The following interlocks shall be provided:

- a) The compressor shall only run when the recirculation and condenser fans are running.
- b) Heater elements, when specified, shall only be on when the recirculation fan is running.
- c) Heater elements must be fitted with an overheat cut-out thermostat.
- d) Cooling and heating shall not run simultaneously.

Refrigerant is to be of CFC free type

Reverse cycle heating shall be provided when calling for heating, i.e. heater elements not accepted.

Air conditioners shall be unconditionally guaranteed for a minimum period of twelve (12) months from date of installation.

Air conditioners shall comply with the Occupational Health and Safety Act of 1993, as amended.

2.2.3.1. Controls

The air conditioning in each room is to have a single, independent, hard wired controller, flush mounted, installed next to the light switch.

2.2.3.2. Split Units

Split type units shall consist of a direct expansion fan coil unit and a separate externally located air cooled condensing unit.

The fan coil unit must be suitable for wall and floor mounting or ceiling suspended as specified and shall be operated by hard wired controls.

- a) The condensing unit shall be wall mounted on sturdy, hot dipped galvanized brackets with galvanized rawl bolts in the position specified.
- b) The condensing unit shall be made weatherproof.
- c) The interconnecting refrigerant piping and electric wiring shall be fitted in trunking and unobtrusively run between units and must be straight, vertical, horizontal or parallel to walls as applicable.
- d) Refrigerant piping shall be seamless, dehydrated, deoxidized, sealed, copper tubing.
- e) Holes made through the building wall shall be neatly finished, sealed and made good, and a horizontal PVC sleeve installed protruding not more than 5mm beyond the wall.
- f) The suction (and supply when reverse cycle heating is used) line piping is to be insulated with Armaflex type insulation and any exposed insulation is to be painted with UV resistant, flexible type outdoor paint. Any joints or bends are to be sealed with polyurethane foam.

2.2.3.3. Installation of Air Conditioners

Where specified the air conditioning units supplied shall be installed in the following manner:

Provision shall be made to remove condensate from inside the building via copper or PVC tubing which must be saddled against the outside wall at intervals of no greater than 750mm (minimum internal diameter of 20mm).

Cassette units are to be installed flush with the ceiling.

The interconnecting refrigerant piping and electric wiring shall be fitted in trunking and unobtrusively run between units and must be straight, vertical, horizontal or parallel to walls as applicable.

Refrigerant piping shall be seamless, dehydrated, deoxidised, sealed, copper tubing.

The suction (and supply when reverse cycle heating is used) line piping is to be insulated with Armaflex type insulation and any exposed insulation is to be painted with UV resistant, flexible type outdoor paint. Any joints or bends are to be sealed with polyurethane foam.

The equipment is to be supplied with a manufacturer's guarantee of 5 years on the motor/compressor.

2.2.4. Supply/Extract Fans

In-line axial fans, as per the drawings.

In line fans are to be complete with internal and external grilles and wall kits. The fans are to be fitted with a totally enclosed motor fitted with lubricated-for-life bearings and thermal cut-out overheat/overloading protection. Fan noise is not to exceed 40 dB (A) (measured at 2m). Fans are to operate permanently or controlled by a switch, as indicated on the drawings.

Supply air fans are to be installed with a filter box with a standard sized filter. The filter box is to be installed to allow replacement of the filter.

2.2.5. Supply/Extract Air Ducting

2.2.5.1. Sheetmetal Ducting

0.6mm galvanised steel sheetmetal ducting complete with MEZ flanges, in accordance with SANS 1283, installed in accordance with SANS 10173, is required.

2.2.5.2. Flexible Ducting

Flexible ducting may only be used at connections to disc valves. It is to be non-allergenic spiral wound and not to exceed 1.5 metre in length. Connections are to be clamped with purpose made stainless steel clamps.

All ducting is to comply with Technical Specification clause **Error! Reference source not found.**

2.2.6. Fresh Air Supply

Fresh air supply quantities for each room are indicated on the drawings.

2.2.7. Weather Louvres

Standard Trox type AWG weather resistant louvres, with natural anodised finish, or powder coated to the Architect's specified colour.

Louvres are to be complete with sub frames and secured on the wall, external to the relevant extract fan.

2.2.8. Door Grilles

300x300mm double-sided natural anodised aluminium door grilles, with frames drilled for countersunk fixing.

These are to be handed to the builder for installation by his carpenter.

2.3. Fire Booster Pump

Fire Pump – 30lit/s @ 400kPa

A complete fire booster set consisting of:

- 1 x electric duty pump
- 1 x electric jockey pump
- 2 x control panels (duty and jockey pump)
- Inlet and outlet manifolds, valves and base plate
- Recirculation test bypass line with flow meter
- Pressure gauges and switches
- 2 x pressure vessels

The pump set is to be supplied, complete, factory tested and ready for operation.

The Jockey Pump will service low demand leaks in the Firewater reticulation network.

When the water system pressure drops below a specific setpoint, an output signal is given to the Fire Detection System and the Primary Pump is started.

2.4. Fire Suppression System

An FM-200 automatically operated fire suppression system is required for the above room and must comply with the following:

- Not require an electrical power connection for activation.
- Be actuated by heat
- Mechanically actuated
- Self-contained
- 2 stage sounder beacons and warning lights
- To service the following volume room: 5.0m X 3.7m X 3.1m
- Equipment is to comply with the latest amendments of:
 - SANS 369-2: Fire protection measures, mechanical actuation, extinguishing systems
 - SANS 14520-1 Fire-extinguishing systems, gases, design, physical properties

2.5. Fire Protection Equipment

2.5.1. Fire Hose Reels

Fire hose reels are to be fitted with an isolating valve and union, in that order (so that the reel can be isolated and removed without having to isolate the mains) and comply with SANS 543.

2.5.2. Hand Held Extinguishers

Hand held fire extinguishers are to be comply with SANS 1739 and SANS 1522.

These are to be mounted on a full-length hardwood backing board on the walls, as shown in the drawings:

- a) DCP handheld extinguishers – are to comply with SANS 1522, SANS 1739 and SANS 10105.

2.5.3. Signage

200x200mm SABS approved photoluminescent signage a clear perspex sheet, with anodised aluminium supports, mounted on the wall, suspended from the ceiling, or mounted perpendicular to the wall, as agreed on site with the Engineer and Architect.

2.6. Rainwater Harvesting Pump System

A booster pump and hydrosphere combination system is to be installed to feed the building with water from the harvested rainwater.

The system is to incorporate a float switch which senses when the rainwater storage tank is empty and automatically switches off the booster pump and opens a solenoid valve on the municipal feed, which allows the toilets to be fed by municipal water.

The specifications are given below:

- Pump to supply 6.7 litre/sec at 400 kPa
- Hydrosphere to have a capacity 100 litre
- Pump must be supplied aligned and complete on their base frames.

2.7. General

2.7.1. Air Conditioning: Qualifications of Tradesman

All air conditioning works are to be done by an authorised person who is registered with the South African Qualification and Certification Committee for Gas (SAQCC Gas), under the relevant category.

Valid proof of registration with SAQCC Gas shall be provided at the onset of the works.

2.7.2. Air Conditioning: Certificate of Conformity

In order to comply with the Pressure Equipment Regulations and Section 10 of the Occupational Health and Safety Act, a Certificate of Conformity (CoC) must be issued for the refrigeration works on the completion of the works.

Only an authorised person who is registered with the South African Qualification and Certification Committee for Gas (SAQCC Gas) may sign a CoC.

2.7.3. Electrical Connections

All equipment is to be provided with suitable electrical connections to a nearby isolator, provided by others.

2.7.4. Approval of Equipment

The contractor is to submit all technical information of the equipment to be installed for approval by the engineer prior to ordering/fabrication.

2.7.5. Shop Drawings

The contractor is to prepare the following detailed drawings for approval by the engineer prior to fabrication/ordering:

- a) Electrical requirements
- b) Building works required
- c) Ducting layout

These drawings are to include measuring on site and detailing equipment offered.

2.7.6. Operation and Maintenance Manuals

The contractor shall hand over, at the completion of the works, three (3) copies of the necessary operating and maintenance requirements for all plant and equipment supplied and installed by him. Each copy of the operating and maintenance manual shall be separately bound, in a plastic covered hard cover ring binder, indexed and contain the following data:

2.7.6.1. As Built Drawings

A complete set of full-size paper prints of the drawings of the entire installation reflecting as-built conditions, shall be included in each copy of the manual. The set shall include:

- a) Electrical wiring diagrams indicating all cables sizes, current ratings, fuses, control units, both internal and external to the machine.
- b) Mechanical drawings and schematics showing all equipment, connections to the equipment and service runs installed by the contractor, and isolating valves, etc.

- c) Exploded views of all equipment showing each component part adequately identified and numbered.
- d) Electronic copies of the drawings (on CD) are to be handed over at first delivery.

2.7.6.2. Equipment Schedules

A complete schedule of all plant and equipment forming part of the works shall be included in the manual. The schedule shall include, but shall not be restricted to, the following data:

- a) equipment type and model
- b) equipment identity number/serial number
- c) working load/pressure
- d) date of manufacture, testing installation and commissioning
- e) country of manufacture
- f) manufactures name and contact address

2.7.6.3. Maintenance Requirements

The manufacturer's recommendation with regard to the routine servicing and maintenance of all equipment shall be included in the manual. This data shall include the recommended service interval and the estimated hours required for each type of service, for each item of equipment, together with a list of agents/contractors authorized to carry out service/maintenance.

2.7.6.4. Operating Instructions

A complete description of all-operating procedures and safety measures shall be included in the manual. A basic "Fault Finding Guide" shall also be included.

2.7.6.5. Staff Training Certificate

A certificate indicating the staff training details must be included in the manual. This should detail the training curriculum, the date, the trainer's name, ID number, company and position, the trainees' names, ID numbers and positions.

2.7.7. Testing and Commissioning

All equipment is to be tested and commissioned in accordance with the manufacturers' requirements. After each component has been tested/commissioned, the system is to be commissioned in the presence of the Client's representative, the results recorded for inclusion in the O&M Manuals.

The testing should include:

- a) Balancing of airflow between diffusers, so as to obtain the airflow requirements as set out in the drawings.

2.7.8. Guarantee Period

All equipment is to be guaranteed for a period of 12 months after hand-over.

2.7.8.1. Maintenance During the Guarantee Period

The contractor is to allow for the maintenance of all equipment and installations included in this specification, for the full 12-month guarantee period. Notwithstanding the above, this is to include;

After 6 months, all equipment is to be serviced, all filters and oil replaced, and any repairs that may be required effected. A report, per service type, is to be submitted.

During the 12th month, all equipment is to be given a major service, which is to include the replacement of all consumables, belts, filters, oils and seals as well as any “touching-up” that may be required to hand the equipment over in “as-new” condition at Final Delivery.

2.7.9. Spares on Site

Running spares are to be left on site. These are to be replenished after use at the contractor’s next visit. First and Final Delivery will only be taken with a full complement of spares neatly stored in the applicable plantrooms. The contractor is to provide any brackets/shelves etc. that may be required to properly store these; i.e. spares left on the floor is not acceptable. In addition, labels detailing the type of spare/model/part No. etc. and number off are required.

2.7.10. Logbooks

Each system is to have a logbook, kept in the plantroom/maintenance manager’s office. These are to be A4 2-quire hardcover, feint and margin books per plantroom/equipment type. Where more than one type of equipment is in a plantroom, a book per service type shall be provided.

For groups of equipment (i.e.: fancoil air conditioning units, extraction fans, chilled water equipment, etc.) a single book, kept in the applicable office, will suffice.

These logbooks are to be completed by all staff at every visit/inspection/service or repair, and shall include:

- date
- running hours (if applicable)
- description of any work done/spares used
- any other relevant remarks
- the service man and company name (PRINTED)

2.7.11. Plantroom Padlocks

All mechanical plantrooms/equipment access doors etc. are to be provided with keyed alike 50mm brass padlocks (Viro HA1). A set of 5 keys, are to be handed over at First Delivery

2.7.12. Site Dimensions

Note that the dimensions shown on the drawings/listed in the bills of quantities are for tender purposes only, and that contractors are to verify all dimensions on site, and prepare fabrication drawings, for approval by the Engineer, prior to ordering/fabricating any equipment/components.

FIRE DETECTION SYSTEM

GENERAL SPECIFICATION

1. DRAWINGS

- (a) The outlet positions shown on drawings are approximate only as are the positions of light fittings. Actual positions are to be determined on site in liaison with the Head : Public Works prior to installation of the circuit wiring.
- (b) The drawings issued with this document are listed in the Table of Contents at the front of this document.

2. CONTRACTOR'S WORK

The Contractor shall supply and install all the distribution boards, conduit, wireways, cables, wiring, fittings and socket outlets as specified below and as per the Bill of Quantities.

- a) Be responsible for the planning of the electrical contractor's work.
- b) Attend site meetings.
- c) Oversee work being performed
- d) Commissioning
- e) Certificate of Compliance

3. SAFETY

It MUST be stressed that the above site IS occupied so workflows must be developed to minimize disruption and hazard to the occupants. Any trenches excavated will be properly barricaded and shall be re-filled within one week of excavation. i.e. cable sleeves and cables shall be installed as soon as the trench has been dug. If this is not the case the contractor will be instructed to fill in the excavations and re-excavate at a later stage at his own cost.

4. STANDARD SPECIFICATIONS

The entire installation shall be completed to the satisfaction of the Head : Public Works and shall be carried out in accordance with the standards listed in the Main Electrical Specification as well as SANS 10139

5. SCOPE OF WORK

The upgraded Buildings at Bergville Magistrates Court will require fire detection, including an aspirating system for the cells.

FIRE DETECTION SYSTEM**PARTICULAR SPECIFICATION**

This Particular Specification shall be read in conjunction with the Electrical Specification and the Schedule of Equipment offered to be found on T2_16 and reference lists at the end of this specification are to be completed at the time of tender.

1. SCOPE OF WORK

The Fire Detection System must be installed by a Specialist Fire Detection contractor.

The Electrical Contractor shall install round outlet boxes at the positions indicated on the Drawing 2682-01-04, in the void or concrete ceiling slab or brickwork. Where there are ceiling voids, the Fire Detection Specialist shall install a dome lid and a 2m length of 20mm PVC flexible conduit from the Dome Lid to his Fire Sounders, etc.

NOTE : Fire Detection conduits Shall Be PVC 25mm (or larger if required) conduit unless otherwise indicated.

With respect to the Manual Call Points, the Electrical Contractor shall take delivery from the Fire Detection Specialist the required outlet boxes so that they may be FLUSH.

2. FIRE DETECTION SYSTEM TECHNICAL SPECIFICATION

2.1 Fire Detection Control Panel – a 4 loop analogue addressable panel, upgradeable to 8 loops only by the addition of the necessary expansion card, is required for the Main Admin Office of the Bergville Police Department. A LCD Repeater panel is to be installed in the Gatehouse Admin Office. This should comply with the following minimum requirements ;

- 230V input
- 24 hour battery backup (3 hours with sounders operating), battery charger, etc.
- 2 sounder outputs
- 1A, 30V DC relay outputs
- LCD display
- Up to 20 display zones.
- 24 Volt auxiliary output
- 2 programmable voltage free relays
- I/O programming capabilities with Boolean functions
- Up/download programming from a standard PC
- Fibre-optic interface unit to enable communication with other Panels.

2.2 Optical Smoke Detectors – these shall be compatible with the Fire Detection Control Panel and should comply with the following minimum requirements. Each Ward Fire Detector needs to be vandal proof so a robust “grille” shall be installed over each detector to protect them ;

- Ceiling mounted
- Analogue addressable
- White LED indication (red when alarming)
- 17-28V dc operating voltage
- 0 -95% humidity, non condensing
- IP43 rated

- Standard base
- Remote test capabilities.
- Numeric addressing
- Full diagnostic self-testing

2.3 **Beacon Sounders**

- Wall or ceiling mounted, as Roshni
- Analogue Addressable
- 17-39V dc operating voltage
- 103 dB(A) sound output at 1 metre
- 990 Hz continuous tone
- 990 Hz On/off at 1 Hz Intermittent tone
- 990 Hz/650 Hz two tone capability

2.4 **Loop Sounder** - these shall be compatible with the Fire Detection Control Panel and should comply with the following minimum requirements ;

- Wall or ceiling mounted
- Analogue Addressable
- 17-39V dc operating voltage
- 100 dB(A) sound output at 1 metre
- 990 Hz continuous tone
- 990 Hz On/off at 1 Hz Intermittent tone
- 990 Hz/650 Hz two tone capability

2.5 **Isolator Bases** - these shall be compatible with the Fire Detection Control Panel and should comply with the following minimum requirements ;

- Ceiling mounted
- Analogue addressable
- White LED indication (red when indicating an operation)
- Capable of resetting itself once a fault is cleared.
- 17-28V dc operating voltage
- 0 -95% humidity, non condensing
- IP43 rated
- Standard base. Can provide a common base for a detection device

2.6 **Manual Call Points** - these shall be compatible with the Fire Detection Control Panel and should comply with the following minimum requirements ;

- Flush mount, high strength red plastic housing
- Analogue addressable
- LED alarm indicator
- Tamper proof break glass design with anti vandal flip up cover
- IP67 rated
- Ease of testing with self reset, with Test Key

2.7 **Aspirating Devices** – These are required for the Cells. They are not intended as early warning devices but as a remote air sampling solution so as to avoid the possibility of vandalism to detectors installed inside a cell.

They shall:

- Be mounted on the slab above the cell
- be analogue addressable
- capable of 2 channel operation for up to two (2) heads
- contain a cartridge air filter
- be IP50 rated

2.8 Cabling – fire retardant cabling, type PH30, 0.75mm² or 1mm² minimum, as required, should be used and shall be installed in a Class A configuration.

2.9 Good Working Order – the above installation shall be supplied, installed and commissioned, including all necessary sundry items, necessary to leave the installation in a good working order.

3. Lightning and Surge Protection

The equipment shall be properly protected against lightning hazards, power surges, mains-borne and other noise interference to prevent malfunctioning of the system.

4. MAINTENANCE AND GUARANTEE PERIOD

The contractor shall Guarantee, and provide maintenance for, the complete installation including fittings, fixtures, materials and workmanship for a period of twelve (12) months from the date of first delivery of the installation. This shall be inclusive of the time and other costs (materials, travel, accommodation, etc.) required.

The contractor shall allow to visit the site at the start of the 12th month after First Delivery is taken to perform any required maintenance as well as any guarantee related work not already actioned.

5. OPERATING AND MAINTENANCE MANUALS, ETC.

The Contractor shall supply three complete comprehensive sets (one original and 2 copies) of the necessary and operating and maintenance requirements for all [plant and equipment supplied and installed by him/her as part of the WORKS. Each copy of the operating and maintenance manual shall be separately bound in an acceptable manner, and shall contain the following data where applicable. These documents are to be handed to the Engineer for onward transmission to the Department of Health Head Office official :

- Scope of Work
- Operating Instructions
- Normal Operation
- Safety Measures
- Fault Finding Guide
- Equipment Information/Schedules – a complete schedule of all plant forming part of the Works shall be included in the manual. The schedule shall include, but shall not be restricted to, the following data :
 - i. Equipment type and model
 - ii. Equipment Identity number/ serial number.
 - iii. Date of manufacture, testing installation and commissioning.
 - iv. Country of manufacture.
 - v. Manufacturer's name and contact address.
 - vi. Any other information required by the Department.

- Schedule of Information
- List of Spares and Agents
- Design Data
- As Commissioned Data
- Maintenance Requirements – the manufacturer's recommendation with respect to the routine servicing and maintenance of all equipment shall be included in the manual. This data shall include the recommended service interval and the estimated hours required for each type of service, for each item of equipment, together with a list of agents/contractors authorized to carry out service/maintenance.
- KZNPA Service Schedules
- Manufacturer's Service Recommendations
- Manufacturer's Literature
- Equipment Brochures
- Proprietary Drawings, Exploded Views and Wiring Diagrams
- As-Built Drawings
- Electrical Drawings – a complete set of drawings of the entire installation shall be included in the manual, and which shall include :
 - i. Electrical Wiring Diagrams indicating all cable sizes, current ratings, fuses, control units, site cable reticulation and schematic wiring diagrams applicable to the Works.
 - ii. Mechanical drawings and schematics showing all equipment, connections to the equipment and service runs installed by the Contractor, etc.
 - iii. Exploded views of all equipment showing each component part adequately identified and numbered.
 - iv. Electronic copy of all drawings, preferably in .DWG (alternatively in .DXF) Format.
 - v. Laminated and framed copies of Operating Procedures, wiring diagrams, zone diagrams and plant schematics, as applicable, are to be fixed to the wall in a well illuminated and accessible area.
- System Layouts and Schematics
- Training Certificates

6. TRAINING

After installation of the system, and before first delivery, the hospital staff must be trained in the operation of Intercom system as well as the maintenance personnel who must be trained in the basic fault finding and malfunctioning of the system. Training Certificates must be signed by the staff that received the training.

7. PROPRIETARY MATERIALS, SYSTEMS, ETC.

Any reference in these schedules of prices or specifications to trade or brand names (and catalogue numbers, etc.) shall be deemed to be followed by the words “or other approved”. Similarly, any wording equating to similar to, equal to, equivalent to, etc. when used in combination with a trade name or brand name (and catalogue numbers, etc.) shall be entirely replaced with the trade or brand names (or catalogue numbers, etc.) followed by the words “OR OTHER APPROVED”. This will take precedence over any contradictory clause or note appearing anywhere in this document.

Where the term “or other approved” is used in connection with proprietary materials or articles it is to be understood that approval shall be at the sole discretion of the Head : Public Works.

Where brand and trade names are referred to in these documents they shall indicate the quality and type of material or fitting required and no substitution of materials so specified will be permitted unless the authority of the Head : Public Works has been obtained in writing **before tenders close**.

In all cases where the Contractor takes delivery of, handles, stores, uses, applies and/or fixes any proprietary product he shall do so in strict accordance with the manufacturer’s instructions after consultation with the manufacturer or his authorized representative.

8. DEFINITION OF APPROVED, ETC.

The terms “approved” or “specified” where used in these documents shall mean approved or specified by the Head : Public Works.

SCHEDULE OF INFORMATION FOR FIRE DETECTION SYSTEM

(To be completed by Tenderer)

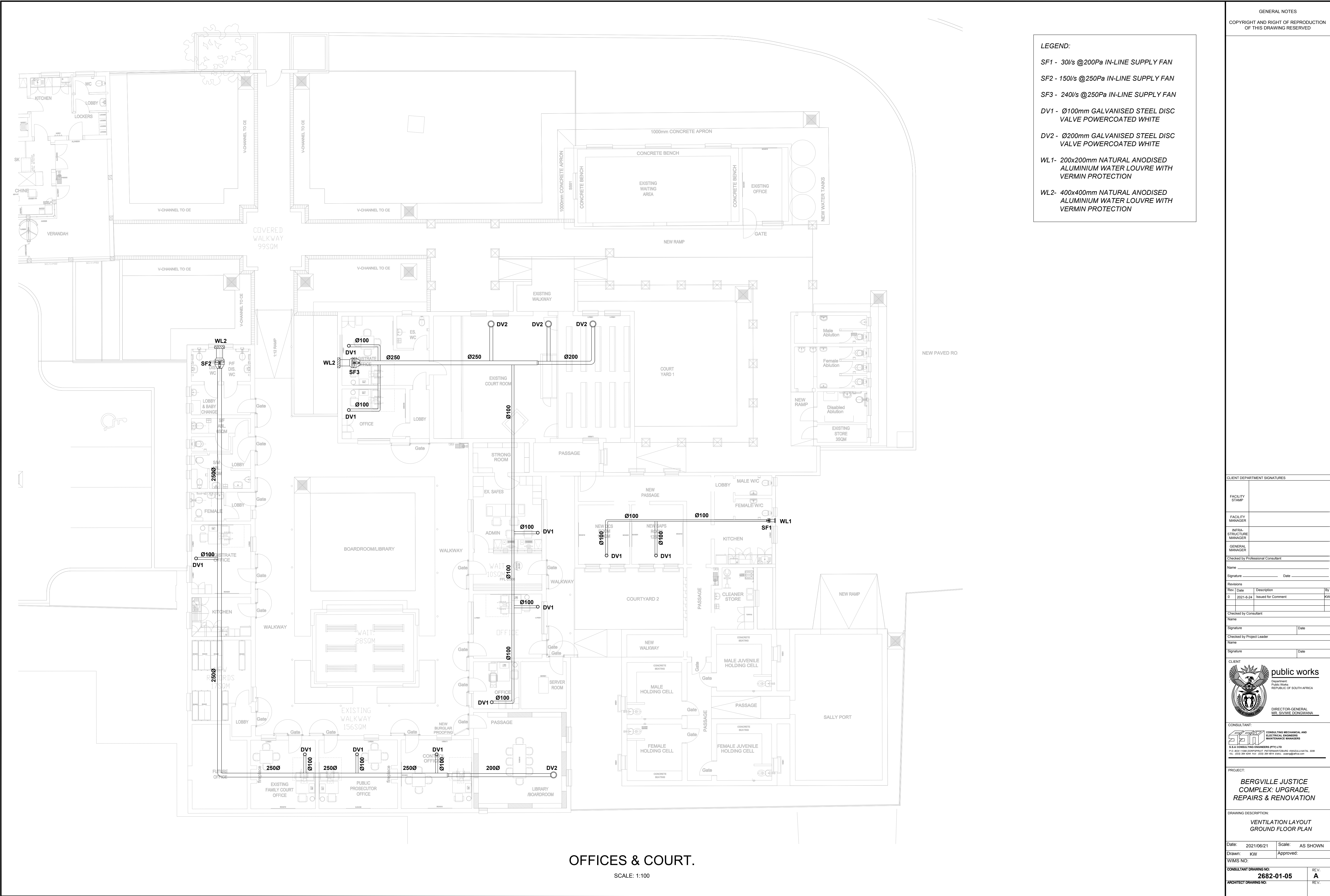
A list of at least ten references shall be given where the tenderer has installed FIRE DETECTION systems in the past.

Tenderers must complete the following schedule of information and are to submit with their tender comprehensive literature on the equipment offered.

The list shall include the following points for each system:-

1. Manufacturer.....
2. Country of Manufacturer.....
3. Manufacturer's Type
number.....
4. Company name and telephone
number.....
5. Date when installed. (Also include the oldest working installation,
in the list)
.....
6. Number of repair calls to date
.....
7. Nature of fault (s)
.....
8. Maximum time before first repair call
.....

N.B. Information given here shall be true: If it is discovered that any of the information given is false the tenderer may be disqualified.



- LEGEND:**
- SF1 - 30l/s @200Pa IN-LINE SUPPLY FAN
 - SF2 - 150l/s @250Pa IN-LINE SUPPLY FAN
 - SF3 - 240l/s @250Pa IN-LINE SUPPLY FAN
 - DV1 - Ø100mm GALVANISED STEEL DISC VALVE POWERCOATED WHITE
 - DV2 - Ø200mm GALVANISED STEEL DISC VALVE POWERCOATED WHITE
 - WL1- 200x200mm NATURAL ANODISED ALUMINIUM WATER LOUVRE WITH VERMIN PROTECTION
 - WL2- 400x400mm NATURAL ANODISED ALUMINIUM WATER LOUVRE WITH VERMIN PROTECTION

GENERAL NOTES
COPYRIGHT AND RIGHT OF REPRODUCTION
OF THIS DRAWING RESERVED

CLIENT DEPARTMENT SIGNATURES			
FACILITY STAMP			
FACILITY MANAGER			
INFRA STRUCTURE MANAGER			
GENERAL MANAGER			
Checked by Professional Consultant			
Name _____			
Signature _____ Date _____			
Revisions			
Rev	Date	Description	By
0	2021-6-24	Issued for Comment	KW
Checked by Consultant			
Name _____			
Signature _____ Date _____			
Checked by Project Leader			
Name _____			
Signature _____ Date _____			
CLIENT			
 public works Department Public Works REPUBLIC OF SOUTH AFRICA DIRECTOR-GENERAL MR. SIVWE DONGWANA			
CONSULTANT:			
 S&A CONSULTING ENGINEERS (PTY) LTD P.O. BOX 1596 CORRIEMOUNT PATTERSONBURG 6001 TEL: 033 361 404 FAX: 033 361 404 EMAIL: info@sae.co.za			
PROJECT:			
BERGVILLE JUSTICE COMPLEX: UPGRADE, REPAIRS & RENOVATION			
DRAWING DESCRIPTION:			
VENTILATION LAYOUT GROUND FLOOR PLAN			
Date:	2021/06/21	Scale:	AS SHOWN
Drawn:	KW	Approved:	
WIMS NO:			
CONSULTANT DRAWING NO:		REV:	
2682-01-05		A	
ARCHITECT DRAWING NO:		REV:	



SMOKE AND FIRE DETECTION

FIRE ALARM OPTICAL SMOKE DETECTOR

FIRE ALARM ELECTRONIC SOUNDER

FIRE ALARM HEAT DETECTOR

FIRE ALARM PANEL

MANUAL CALL POINT

ASPIRATING DETECTOR

NOTE:

1. 25mm CONDUIT TO BE UTILISED UNLESS OTHERWISE INDICATED

2. SPECIALIST CONTRACTOR TO MAKE PROVISION TO RECEIVE A NO "VOLT" CONTACT FROM THE FIRE DETECTION PANEL OR IN VENTILATION SUPPLIES IN DB'S

NOTE 1:

INSTALL A FLUSH 150 x 150mm DRAW BOX BEHIND THE FIRE PANEL AND TAKE 1 x 50mm AND 2 x 25mm CONDUIT UP INTO ROOF VOID FOR ONWARD LOOPS VIA DRAW BOXES AND 25mm CONDUIT AS PER SPECIALIST INSTRUCTION (TO BE DONE BY ELECTRICAL CONTRACTOR).

NOTE:

FIRE DETECTION WILL INTERFACE TO SHUT DOWN SUPPLY FANS AT DB'S
FIRE DETECTION IS ALSO REQUIRED TO INTERFACE WITH DOOR CONTROLLERS.
(SEE ACCESS CONTROL DRAWING)

GENERAL NOTES

COPYRIGHT AND RIGHT OF REPRODUCTION OF THIS DRAWING RESERVED

CLIENT DEPARTMENT SIGNATURES

FACILITY STAMP

FACILITY MANAGER

INFRASTRUCTURE MANAGER

GENERAL MANAGER

Checked by Professional Consultant

Name _____ Date _____

Signature _____

Revisions

Rev	Date	Description	By
0	2021-6-24	Issued for Comment	KW

Checked by Consultant

Name _____

Signature _____ Date _____

Checked by Project Leader

Name _____

Signature _____ Date _____

CLIENT

public works
Department: Public Works
REPUBLIC OF SOUTH AFRICA

DIRECTOR-GENERAL
MR. SIWWE DONGWANA

CONSULTANT:

S.B.A. CONSULTING ENGINEERS (PTY) LTD
P.O. BOX 1198, CORNWALL, WESTERN CAPE 7800
TEL: 022 384 4044 FAX: 022 384 4045 EMAIL: info@sba.co.za

PROJECT:

BERGVILLE JUSTICE COMPLEX: UPGRADE, REPAIRS & RENOVATION

DRAWING DESCRIPTION:

FIRE DETECTION LAYOUT GROUND FLOOR PLAN

Date: 2021/06/21 Scale: AS SHOWN

Drawn: KW Approved:

WIMS NO:

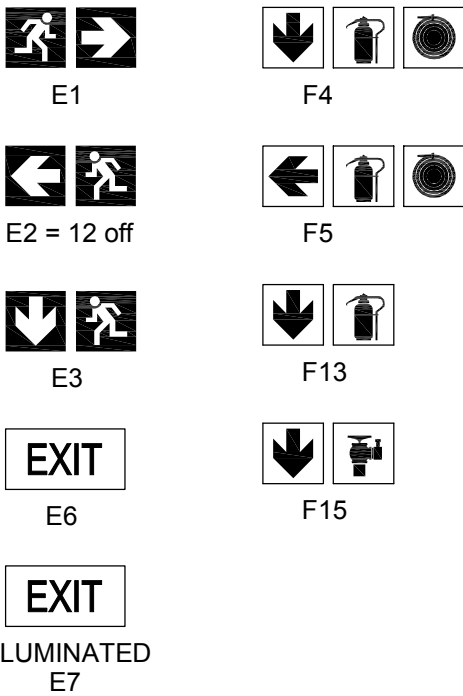
CONSULTANT DRAWING NO: **2682-01-04** REV: **A**

ARCHITECT DRAWING NO: REV:

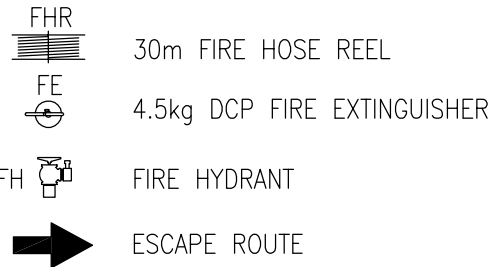
SIGNAGE NOTES

1. ALL PHOTOLUMINESCENT FIRE AND DIRECTIONAL SIGNAGE MUST COMPLY WITH SABS 1186 – 1 & 5 PHOTOLUMINESCENT AND TO BE INSTALLED IN ACCORDANCE WITH SABS 0400 – 1990.
2. ALL PHOTOLUMINESCENT FIRE AND DIRECTIONAL SIGNS ARE TO HAVE A MATT FINISH TO THE FACE OF THE SIGNS AND ARE TO BE FRAMED WITH MITRED CORNERS AND CONCEALED ELBOW JOINTS. FRAME TO BE MANUFACTURED FROM ALUMINIUM.
3. ALL WALL-MOUNTED FIRE AND DIRECTIONAL SIGNAGE TO BE CONCEALED SCREWED TO BRICKWORK. NO DOUBLE-SIDED TAPE
4. ALL SUSPENDED FIRE AND DIRECTIONAL SIGNAGE TO BE HUNG ON STAINLESS STEEL WIRE
5. SIGNAGE IN OFFICE AREAS TO BE 150MM HIGH
6. SIGNAGE EXTERNAL TO BUILDING TO BE ABS IN NON – PHOTOLUMINESCENT
7. SIGNAGE TO EXTERNAL HYDRANTS TO BE POLE MOUNTED AND AT 2000MM HIGH
8. ALL SIGNS TO BE 290X290 SINGLE PICTOGRAM SIZE COMBINATIONS IN BASEMENTS

SIGNAGE LEGEND



LEGEND



FIRE HYDRANT

SCALE: 1:100

GATE HOUSE

SCALE: 1:100

WAITING AREA

SCALE: 1:100

PARKING BAYS

SCALE: 1:100

GARAGES

SCALE: 1:100

OFFICES, COURT ROOM & HOLDING CELLS

SCALE: 1:100

GENERAL NOTES
COPYRIGHT AND RIGHT OF REPRODUCTION
OF THIS DRAWING RESERVED

CLIENT DEPARTMENT SIGNATURES

FACILITY
STAMP

FACILITY
MANAGER

INFRA
STRUCTURE
MANAGER

GENERAL
MANAGER

Checked by Professional Consultant

Name

Signature

Date

Revisions

Rev

Date

Description

By

A

2021-6-24

Issued for Comment

KW

Checked by Consultant

Name

Signature

Date

Checked by Project Leader

Name

Signature

Date

CLIENT

public works

Department
Public Works
REPUBLIC OF SOUTH AFRICA

DIRECTOR-GENERAL
MR. SIVWILE DONGWANA

CONSULTANT

BERGVILLE JUSTICE
COMPLEX: UPGRADE,
REPAIRS & RENOVATION

PROJECT:

BERGVILLE JUSTICE
COMPLEX: UPGRADE,
REPAIRS & RENOVATION

DRAWING DESCRIPTION:

FIRE SIGNAGE
LAYOUT

Date:

2021/06/21

Scale:

AS SHOWN

Drawn:

KW

Approved:

WIMS NO:

CONSULTANT DRAWING NO:

2682-01-03

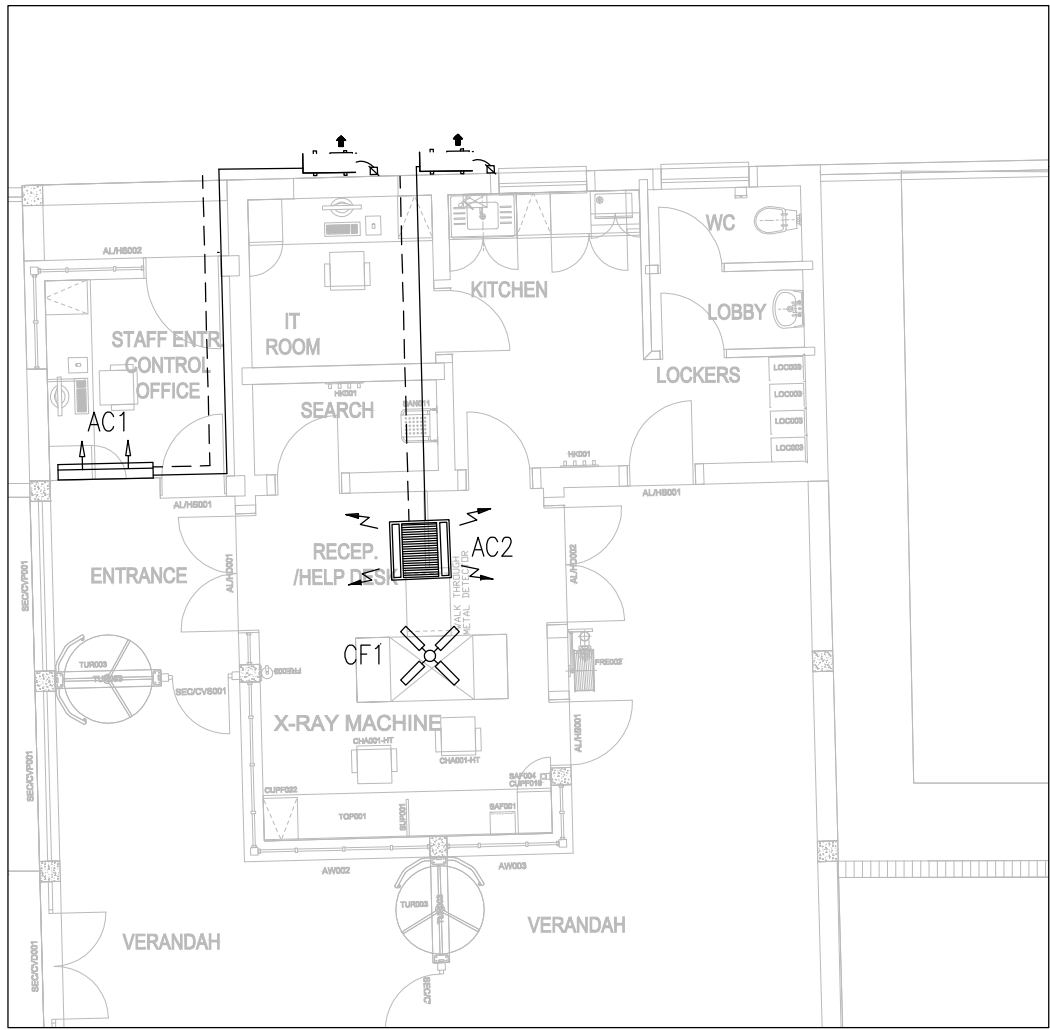
ARCHITECT DRAWING NO:

REV:

REV:

HVAC NOTES

1. AC UNITS ARE TO BE INVERTER TYPE WITH REVERSE CYCLE HEATING.
2. THE UNITS SHALL BE DAIKIN, LG, MITSUBISHI, SAMSUNG OR EQUIVALENT TYPE.
3. ALLOWANCE MUST BE MADE FOR SUITABLE GALVANIZED STEEL MOUNTING BRACKETS FOR THE CONDENSER UNITS WHETHER FLOOR SLAB MOUNTED OR WALL MOUNTED. THE FRAMES SHALL BE SUITABLE TO ALLOW FOR EASY ACCESS TO THE UNIT FOR MAINTENANCE PURPOSES.
4. APPROXIMATE PIPE ROUTES ARE SHOWN ON THE DRAWINGS. WHERE PIPING PENETRATES WALLS AND SLABS ETC. ADEQUATE SLEEVES SHALL BE PROVIDED UNDER THIS CONTRACT.
5. ALL SURFACED MOUNTED PIPING SHALL BE INSTALLED IN SUITABLY SIZED P2000 OR P8000 GALVANIZED "UNISTRUT",COMPLETE WITH REMOVABLE COVER PLATE, SECURELY FIXED TO WALLS. ALL EXPOSED TRUNKING SHALL BE PAINTED. THE COLOUR SHALL BE FINALIZED AT A LATER DATE.
6. ALL PIPING AND CABLING ABOVE CEILINGS SHALL BE INSTALLED ON FACTORY MANUFACTURED GALVANISED STEEL CABLE TRAY, HUNG FROM THE ROOF TRUSSES OR SLAB.
7. ALL REFRIGERANT, LIQUID AND SUCTION, SHALL BE SEPARATELY INSULATED WITH 15 mm THICK ARMAFLEX INSULATION.
8. ELECTRICAL CONTRACTOR SHALL PROVIDE SINGLE PHASE WEATHER PROOF ISOLATORS IN THE PROXIMITY OF AC OUTDOOR UNITS. THE HVAC CONTRACTOR SHALL BE RESPONSIBLE FOR THE WIRING BETWEEN THE ISOLATORS AND THE AC UNITS.
9. ALL AC UNITS SHALL BE CONTROLLED BY A HARD WIRED CONTROLLER, INSTALLED FLUSH MOUNTED ADJACENT TO THE ROOM LIGHT SWITCH CONDUIT TO BE PROVIDED BY THE ELECTRICAL ENGINEER.



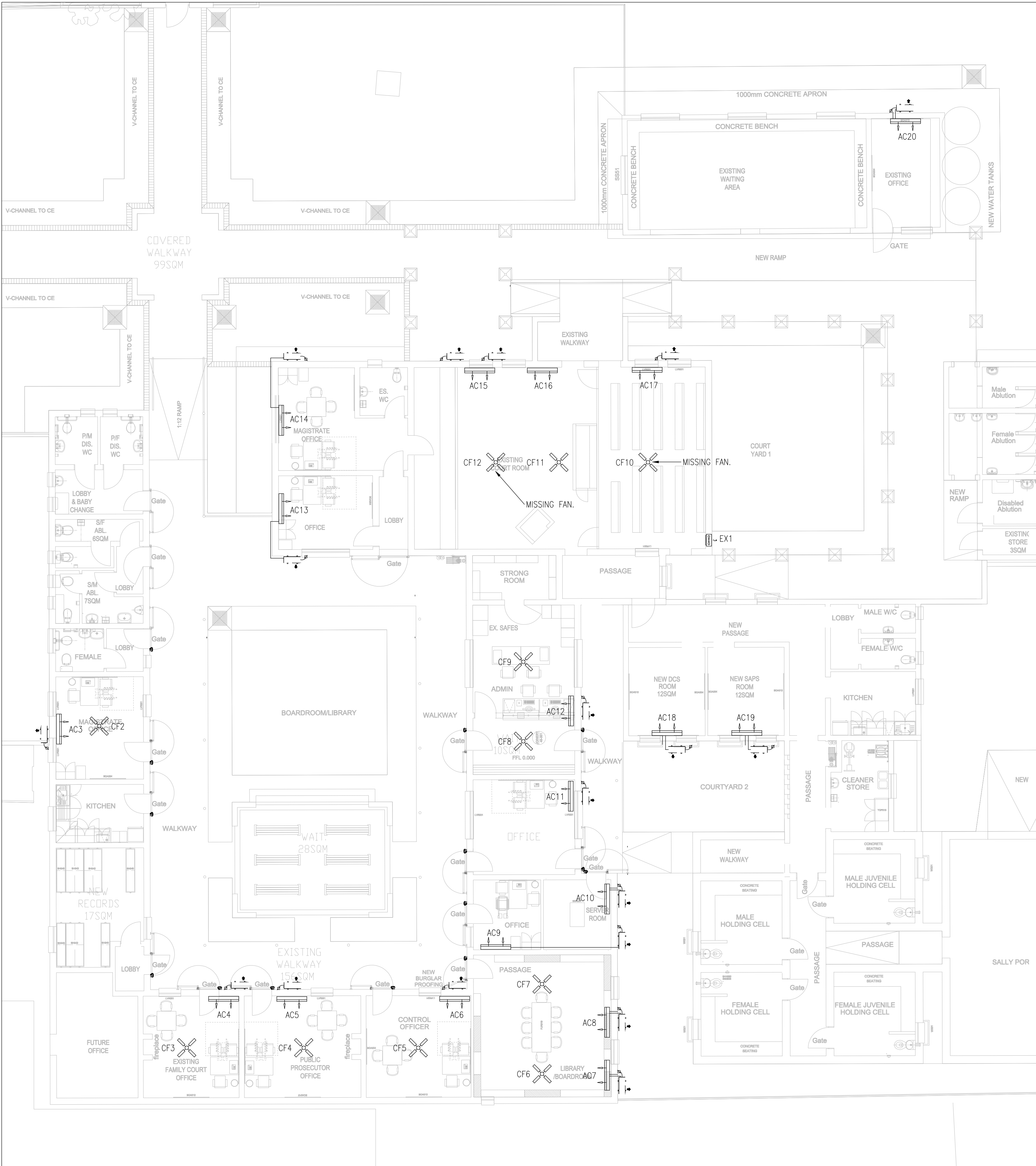
GATE HOUSE.

SCALE: 1:100

EQUIPMENT LIST - AC					
ROOM	UNIT NUMBER	QTY	DESCRIPTION	TOTAL COOLING	ELECTRICAL REQ
ADMIN OFFICE	AC1	1	NEW MIDWALL SPLIT AC UNIT INVERTER TYPE	3.2 kW	1kW, 1PH
RECEPTION	AC2	1	NEW CASSETTE SPLIT AC UNIT INVERTER TYPE COMPLETE WITH CONDENSATE DRAIN PUMP.	5.2 kW	3kW, 1PH
MAGISTRATE OFFICE	AC3	1	EXISTING MIDWALL SPLIT AC UNIT TO BE SERVICED AND REPAIRED IF NECESSARY.	—	—
FAMILY COURT OFFICE	AC4	1	EXISTING MIDWALL SPLIT AC UNIT TO BE SERVICED AND REPAIRED IF NECESSARY.	—	—
PUBLIC COURT OFFICE	AC5	1	EXISTING MIDWALL SPLIT AC UNIT TO BE SERVICED AND REPAIRED IF NECESSARY.	—	—
CONTROL OFFICE	AC6	1	EXISTING MIDWALL SPLIT AC UNIT TO BE SERVICED AND REPAIRED IF NECESSARY.	—	—
LIBRARY	AC7	1	NEW MIDWALL SPLIT AC UNIT INVERTER TYPE	6.2 kW	2.5kW, 1PH
LIBRARY	AC8	1	EXISTING MIDWALL SPLIT AC UNIT INVERTER TYPE	—	—
OFFICE	AC9	1	NEW MIDWALL SPLIT AC UNIT INVERTER TYPE	3.5 kW	1.5kW, 1PH
SERVER ROOM	AC10	1	NEW MIDWALL SPLIT AC UNIT INVERTER TYPE	3.5 kW	1.5kW, 1PH
ENQUIRES	AC11	1	EXISTING MIDWALL SPLIT AC UNIT TO BE SERVICED AND REPAIRED IF NECESSARY.	—	—
ADMIN	AC12	1	EXISTING MIDWALL SPLIT AC UNIT TO BE SERVICED AND REPAIRED IF NECESSARY.	—	—
OFFICE	AC13	1	NEW MIDWALL SPLIT AC UNIT INVERTER TYPE	3.5 kW	1.5kW, 1PH
MAGISTRATES OFFICE	AC14	1	NEW MIDWALL SPLIT AC UNIT INVERTER TYPE	3.5 kW	1.5kW, 1PH
COURT ROOM	AC15–AC17	3	EXISTING MIDWALL SPLIT AC UNIT TO BE SERVICED AND REPAIRED IF NECESSARY.	—	—
DCS ROOM	AC18	1	NEW MIDWALL SPLIT AC UNIT INVERTER TYPE	3.2 kW	1kW, 3PH
SAPS ROOM	AC19	1	NEW MIDWALL SPLIT AC UNIT INVERTER TYPE	3.2 kW	1kW, 3PH
MAINTENANCE,.....OFFICE	AC20	1	NEW MIDWALL SPLIT AC UNIT INVERTER TYPE	3.2 kW	1kW, 3PH

EQUIPMENT LIST - VENTILATION				
ROOM	UNIT NUMBER	QTY	DESCRIPTION	ELECTRICAL REQ. INDOOR
RECEPTION	CF1	1	EXISTING CEILING RECIRCULATION. TO BE SERVICED.	—
MAGISTRATE OFFICE	CF2	1	EXISTING CEILING RECIRCULATION. TO BE SERVICED.	—
FAMILY COURT OFFICE	CF3	1	EXISTING CEILING RECIRCULATION. TO BE SERVICED.	—
PUBLIC COURT OFFICE	CF4	1	EXISTING CEILING RECIRCULATION. TO BE SERVICED.	—
CONTROL OFFICE	CF5	1	EXISTING CEILING RECIRCULATION. TO BE SERVICED.	—
LIBRARY	CF6 & CF7	1	EXISTING CEILING RECIRCULATION. TO BE SERVICED.	—
ENQUIRES	CF8	1	EXISTING CEILING RECIRCULATION. TO BE SERVICED.	—
ADMIN	CF9	1	EXISTING CEILING RECIRCULATION. TO BE SERVICED.	—
COURT ROOM	CF10 & CF12	2	NEW 1200 mm CEILING MOUNTED AIR RE-CIRCULATING FAN.	—
COURT ROOM	CF11	1	EXISTING CEILING RECIRCULATION. TO BE SERVICED.	—
COURT ROOM	EX1	1	EXISTING WALL MOUNTED EXTRACT FAN. TO BE SERVICED.	—

LEGEND
----- DRAIN PIPE



OFFICES & COURT.

SCALE: 1:100

GENERAL NOTES
COPYRIGHT AND RIGHT OF REPRODUCTION OF THIS DRAWING RESERVED

CLIENT DEPARTMENT SIGNATURES			
FACILITY STAMP			
FACILITY MANAGER			
INFRA-STRUCTURE MANAGER			
GENERAL MANAGER			
Checked by Professional Consultant			
Name _____			
Signature _____ Date _____			
Revisions			
Rev	Date	Description	By
0	2021-6-24	Issued for Comment	KW
Checked by Consultant			
Name _____			
Signature _____ Date _____			
Checked by Project Leader			
Name _____			
Signature _____ Date _____			
CLIENT			
 public works Department: Public Works REPUBLIC OF SOUTH AFRICA DIRECTOR-GENERAL MR. SHIVWE DONGWANA			
CONSULTANT:			
 SPM S. P. M. CONSULTING TWO ENGINEERS (PTY) LTD P.O. BOX 1006 JOHANNESBURG 2000 TEL: 011 551 0000 FAX: 011 551 0001 EMAIL: info@spm.co.za			
PROJECT:			
BERGVILLE JUSTICE COMPLEX: UPGRADE, REPAIRS & RENOVATION			
DRAWING DESCRIPTION:			
HVAC LAYOUT GROUND FLOOR PLAN			
Date:	2021/06/21	Scale:	AS SHOWN
Drawn:	KW	Approved:	
WIMS NO:			
CONSULTANT DRAWING NO:	2682-01-01	REV	A
ARCHITECT DRAWING NO:		REV.	

Item	Description	Unit	Qty	Rate	Total
	MECHANICAL WORKS BILL NO. 1 MECHANICAL NOTE: i) Quantities in this schedule are to be re-measurable on completion. Rates are fixed in accordance with the tendered rates. ii) This Bill of Quantities is to be read in conjunction with the specification in respect of the following listed items AIR CONDITIONING (WORK GROUP 170) Split Type Air Conditioning Units <u>Supply and install inverter-type split air conditioning units with reverse cycle heating, complete with all necessary piping, insulation, trunking, wiring, electrical work, flush mounted hard wired controls, drains, mounting brackets, rubber waffle pads, etc. necessary to leave the installation in good working order, as follows:</u> 1 12 000 BTU Midwall Unit No 10 2 18 000 BTU Midwall Unit No 2 3 24 000 BTU Midwall Unit No 1 4 18 000 BTU Four Way Cassette Unit No 1 <u>Major service of existing midwall split air conditioning unit, including regassing, minor repairs and replacement of the infrared controller where necessary, to handover the units in fully operational condition.</u> 5 Existing midwall split: 9 000 BTU to 18 000 BTU No 10 Drain Piping 6 22mm PVC drain piping, including supports at 1m intervals and all fixings and fittings (P-traps, bends, tee's, etc.). m 50 VENTILATION Supply Fans <u>Supply air fan, installed with electrical connections to the the electrical point provided by others. To operate with the room light switch.</u> <u>Maximum sound pressure in offices: NR 35 (approximately 40 dB(A)).</u> <u>As specified Fan requirements:</u> 7 30 lit/sec @ 150 Pa, as per TD Silent TD-160/100 or other approved No 3 8 150 lit/sec @ 200 Pa, as per TD Silent TD-500/160 or other approved No 2 9 240 lit/sec @ 250 Pa, as per TD Silent TD-800/200 or other approved No 1 Filter Box 10 A filter box is to be installed in line with the ducting to accommodate a removable standard 300x300mm removable filter. The filter box is to be installed in such a way that the filter is accessible from the No 3				
TOTAL CARRIED FORWARD TO SUMMARY					

Item	Description	Unit	Qty	Rate	Total
	<u>VENTILATION DUCTING</u>				
	(WORK GROUP 171)				
	<u>Circular Sheetmetal Ducting</u>				
	<u>Circular galvanised sheetmetal ducting suspended under the soffit/trusses by a band with single/double rod(s) (suited to size of ducting) above the ceiling, including all fittings, fixings, tee's, bends, reducers, joints, hangers, fixing to slab, fittings, etc.</u>				
11	100mm diameter	m	100		
12	160mm diameter	m	50		
13	200mm diameter	m	4		
14	250mm diameter	m	10		
	<u>Flexible Ducting</u>				
	<u>Flexible ducting, Non-allergenic spiral wound a Not exceeding 1m in length, including all fittings, fixings, etc.</u>				
15	100mm diameter flexible ducting	m	15		
16	160mm diameter flexible ducting	m	5		
17	200mm diameter flexible ducting	m	5		
	<u>Disc Valves</u>				
	<u>Disc Valves, galvanised steel, powder coated white, as specified:</u>				
18	100mm	No	15		
	160mm	No	5		
	200mm	No	5		
	<u>Weather Louvres</u>				
	<u>Natural anodised aluminium Weather Louvres, complete with sub-frames and fixed to the wall.</u>				
19	200x200mm	No	3		
20	400x400mm	No	3		
	<u>Door Grilles</u>				
21	300x300mm double sided natural anodised aluminium door grille, drilled for countersunk fixing	No	8		
	<u>Ceiling Fans</u>				
22	Service existing ceiling fan, including all necessary upgrades	No	9		
23	New ceiling fan with 1420mm blades and four speed controller flush mounted adjacent to room light switch.	No	9		
TOTAL CARRIED FORWARD TO SUMMARY					

Item	Description	Unit	Qty	Rate	Total
	<u>FIRE EQUIPMENT</u>				
	(WORK GROUP 170)				
	<u>New Equipment</u>				
24	New 4.5kg Dry Chemical Powder Hand Held Fire Extinguishers as per SANS 1522 and SANS 1739. Mounted on a full length hardwood backing plate. Installed as per SANS 10105.	No	8		
25	New 9kg Dry Chemical Powder Hand Held Fire Extinguishers as per SANS 1522 and SANS 1739. Mounted on a full length hardwood backing plate. Installed as per SANS 10105.	No	2		
26	Installation of new standard wall mounted Fire hose reels with Ø19mm hose, size 480 x 300mm, 30m long @ 2.0MPa, valve and union. Installed according to SANS 543, installed as per SANS 1128 and SANS 10105.				
	<u>Servicing of Existing Equipment</u>				
27	Servicing of existing portable 4,5kg DCP fire extinguishers, according to SANS 10105.	No	10		
28	New full length hardwood backing plates for the existing extinguishers.	No	10		
	<u>Signage</u>				
29	200x200mm photoluminescent signage a clear perspex sheet, with anodised aluminium supports, for fire equipment and escape routes, as per SANS 1186, screwed to wall/suspended from ceiling/mounted perpendicular to the wall.	No	150		
30	200x200mm plastic signage for fire equipment, as per SANS 1186, screwed to wall/suspended from ceiling/mounted perpendicular to the wall.	No	100		
	<u>Demonstration</u>				
31	Demonstration to occupants, including four fire extinguishers of varying charges, which are to be refilled following the demonstration.	No	1		
	<u>FIRE WATER BOOSTER PUMP</u>				
	(WORK GROUP 170)				
32	Fire water pump, 30 lit/sec @ 400 kPa, including 100 lit hydrosphere, as per Grundfos EN 80-200/188 or other approved.	No	1		
33	Installation of the above pump including all connections to the storage tank and supply reticulation to the building.	No	1		
	<u>FIRE WATER RETICULATION</u>				
	(WORK GROUP 170)				
	<u>Underground Piping</u>				
	<u>Class 12 HDPE piping laid in a 500mm deep trench on a bed of sifted sand, covered with 200mm of sifted sand compacted and then backfilled and compacted.</u>				
34	100mm diameter	m	250		
35	50mm diameter	m	250		
TOTAL CARRIED FORWARD TO SUMMARY					

Item	Description	Unit	Qty	Rate	Total
	<u>Plasson Compression fittings for above piping</u>				
35	100mm - coupling	No	1		
36	50mm - coupling	No	2		
37	100mm - 90 degree tee	No	3		
38	50mm - 90 degree tee	No	4		
39	100mm - 90 elbow	No	5		
40	50mm - 90 elbow	No	6		
41	100mm - 90 elbow with threaded male offtake	No	7		
42	50mm - 90 elbow with threaded male offtake	No	8		
43	100mm to 50mm reducer	No	9		
44	100mm threaded adaptor	No	10		
45	50mm threaded adaptor	No	11		
	<u>Above Ground Piping</u>				
	<u>Copper Class 2 piping to be supplied and installed.</u>				
46	76mm piping	m	20		
47	50mm piping	m	10		
48	28mm piping	m	30		
	<u>Extra over class 2 copper pipes for compression fittings</u>				
49	76mm tee	No	2		
50	50mm tee	No	2		
51	28mm tee	No	2		
52	76mm 90 degree elbow	No	2		
53	50mm 90 degree elbow	No	2		
54	28mm 90 degree elbow	No	6		
	<u>Fire Hydrant</u>				
55	Fire hydrant complete with Ø150mm pedestal. Header pipe to be installed min 500mm below ground and stabilised with concrete at the bottom of header. Header to be mounted 1200mm above ground level.	No	2		
	<u>Twin Booster Point</u>				
56	Twin sprinkler booster and standpipe with two booster Ø76mm booster connections. Standpipe concreted 500mm below ground and fixed 1200mm above ground	No	1		
	<u>RECYCLED WATER BOOSTER PUMP</u>				
	(WORK GROUP 170)				
57	Water pump, 6.7 lit/sec @ 400 kPa, including 100 lit hydrosphere, as per Grundfos CBM5-46 AVBE.	No	2		
58	Installation of the above pump including all connections to the storage tank and supply reticulation to the building.	No	2		
59	Pump enclosure for the above pump, manufactured from polypropylene or other approved. Sized to suit pump supplied.	No	2		
TOTAL CARRIED FORWARD TO SUMMARY					

Item	Description	Unit	Qty	Rate	Total
	<u>FIRE SUPPRESSION</u> (WORK GROUP 170)				
60	A mechanically actuated, heat triggered FM-200 Automatic Gas fire suppression system to service the Records Room. Including 2 stage sounder beacons and illumination warning signs. As described in the specification document and indicated on the drawings	No	1		
61	Installation of the above fire suppression systems	No	1		
	<u>GENERAL</u> (WORK GROUP 170)				
62	Testing, commissioning and handover of all equipment.	No	1		
63	Issuing of an air conditioning Certificate of Conformity for the installation.	No	1		
64	O&M manuals, in separate lever arch files, for air conditioning and ventilation systems including all technical brochures, commissioning data, as-built drawings and staff training certificates, as specified.	No	3		
65	Staff training (maintenance and users) Signed certificates, as specified, to be provided.	No	1		
	<u>Servicing and Guarantee</u>				
66	12 months guarantee on all equipment, as specified.	No	1		
67	6 month inspection/clean/test/minor service of all equipment, as specified.	No	1		
68	12 month inspection/clean/test/major service of all equipment, as specified.	No	1		
TOTAL CARRIED FORWARD TO SUMMARY					

	Total
MECHANICAL WORKS	
BILL NO. 1	
MECHANICAL	
SUMMARY PAGE	
PAGE 1	
PAGE 2	
PAGE 3	
PAGE 4	
PAGE 5	
TOTAL	

Item	Description	Unit	Qty	Rate	Total
	<p><u>MECHANICAL WORKS</u></p> <p><u>BILL NO. 2</u></p> <p><u>FIRE DETECTION INSTALLATION</u></p> <p>NOTE : THE FOLLOWING WORK IS TO BE CARRIED OUT BY AN APPROVED SPECIALIST SUPPLIER.</p> <p><u>SUPPLEMENTARY PREAMBLES</u></p> <p>Tenderers are referred to the project specifications and supplementary preambles for full descriptions of materials, etc., to be used. All work shall be done strictly in accordance with specifications and Manufacturer's instructions and leave in perfect working order after completion</p> <p><u>(WORK GROUP 160)</u></p> <p><u>FIRE DETECTION INSTALLATION</u></p> <p><u>Wireways provided by the Electrical Contractor in the form of conduits in ceiling voids.</u></p> <p><u>Rates below are installed rates including all sundries and consumables, travel, subsistence and management, and main contractor mark up</u></p>				
1	Main Control Panel, analogue addressable, 4 loop expandable to 8 loop, suitable for tele-dialler/transmitter. Allow for 16 no volt relays for access control and ventilation interfaces.	No	1		
2	LCD Repeater unit	No	1		
3	Backup batteries and charger suitable for the supplied Control Panel, and a minimum of the Manual Call Points, Optical Sensors, Heat Detectors, Fire Sounders and Sirens to be installed as part of this project. in accordance with SANS 10139.	No	1		
4	RS485 ARCNET Network Card	No	2		
5	Supply and install Optical Smoke Detectors, excluding bases, but including terminations, etc. with alarm status LED indication and capable of remote LED indication.	No	60		
6	Supply and install Heat Detectors, excluding bases, but including terminations, with alarm status LED indication and capable of remote LED indication.	No	4		
7	Supply and install bases for the above Detectors, and capable of supporting remote LED indication.	No	56		
8	Supply and install Isolator bases, suitable for the mounting of the Optical Sensors or Heat Detectors detailed above. Including all necessary connections. etc.	No	8		
9	Supply and install addressable remote indicators, suitable for both remote Optical Smoke and Heat Detectors. Including all necessary PH30 cabling connections, etc. Within 5 to 10m from the relevant head.	No	15		
10	Supply and install flush mount Manual Call Points, including all necessary back boxes, terminations, break glass (English), etc. Complete with anti-vandal flip up cover. and resettable element.	No	8		
11	Supply and install low current, high output, Loop Beacon Sounder, including all necessary bases, terminations, etc. 103 dB(A) at 1m.	No	7		
TOTAL CARRIED FORWARD TO SUMMARY					

Item	Description	Unit	Qty	Rate	Total
12	Supply and install dome lid for round box, complete with up to 1.5m length of "sprague" trimmed to the length required.	No	94		
13	Supply and install 0.75 mm² PH30 2-core Cable in a Class A configuration.	m	950		
14	Supply and install analogue addressable interface unit/line relay, including enclosure and outgoing compression gland for interfacing with HVAC Controllers,DBs supplying ventilation, Access Control (i.e. local door controllers), etc. Termination of related controller to be by specialist contractor	No	1		
15	25mm PVC Conduit and Fittings	m	700		
16	150 by 150mm draw box behind fire control panel and repeater	No	2		
17	IP65 rated 310x310x165mm deep UT7 fixed lid draw box	No	2		
18	IP65 4x4 draw boxes	No	2		
19	Aspirating system for 4 detectors including I/O interfaces, and 120m aspirating tubes and ducting.	No	1		
	AS-BUILT DRAWINGS				
20	Allow for providing a set of marked up drawings and documentation for the installation to the Engineer.	No	1		
	TESTING AND COMMISSIONING AND TRAINING				
21	Test and commission the complete installation and provide 3 sets of documentation (Block Plan, technical specifications, sales brochures, wiring diagrams, etc.), and training of operator staff, etc. leaving installation in perfect working order.	No	1		
	MAINTENANCE AND GUARANTEE				
22	Maintenance and Guarantee of the installation, including 4x quarterly maintenance visits, two of which are to be major services.	No	1		
TOTAL CARRIED FORWARD TO SUMMARY					

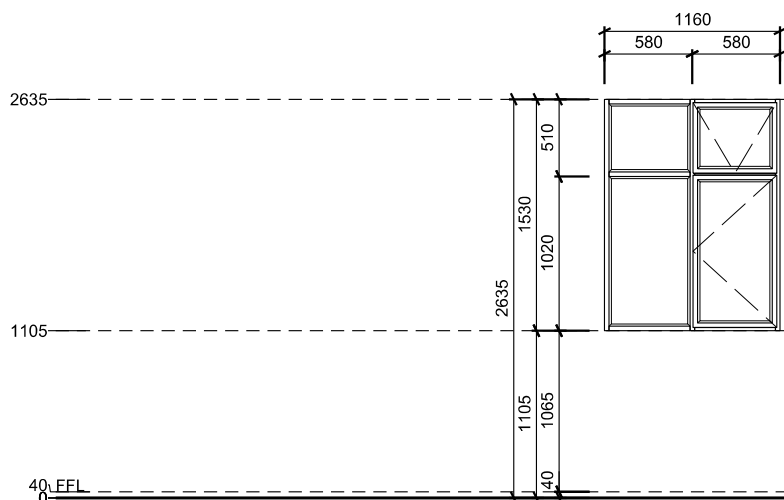
	Total
MECHANICAL WORKS	
BILL NO. 2	
FIRE DETECTION	
SUMMARY PAGE	
PAGE 1	
PAGE 2	
TOTAL	

<u>MECHANICAL WORKS</u>	
TOTAL SUMMARY PAGE	
1	BILL NO. 1 - MECHANICAL
2	BILL NO. 2 - FIRE DETECTION
MECHANICAL WORKS TOTAL	

DRAWINGS AND SPECIFICATIONS

PLAN

'SCALE 1:50'



NOTE: 1. This drawing must be read in conjunction with Schedule 100-AH
If required read in conjunction with SAGGA Glass Installation Information Schedule 100-S
2. Shop drawings and sample to be approved by Architect prior to manufacturing
3. All dimensions to be controlled on site and where applicable to match existing structure

DRAWING DESCRIPTION:

SCALE:

WINDOW AW001

1:50

COPYRIGHT

PROJECT TITLE

BERGVILLE JUSTICE - COMPLETE UPGRADING INCLUDING R & R

PROJECT:	WCS 036745	REV. NO	DET. NO
DRAWN:	BVS /	R00 22-Apr-21	25500-060 -AW001
DATE:			
ISSUED:	22-Apr-21		

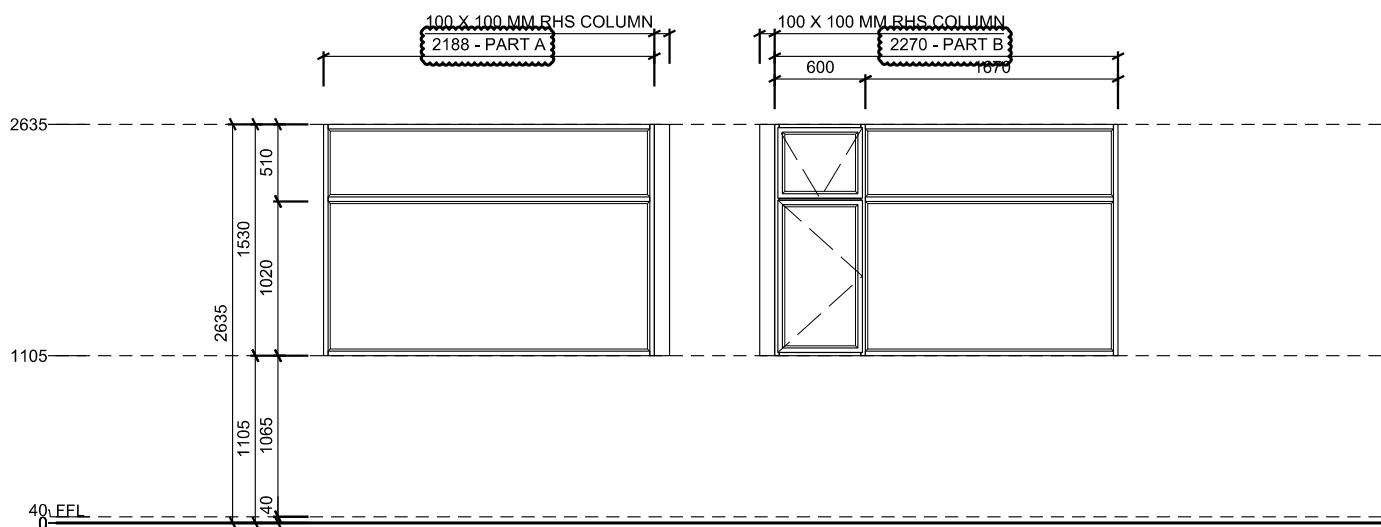
Bartsch

BARTSCH CONSULT (Pty) Ltd

HARRISMITH: Tel: 058 6223471, Fax: 058 623 0844,
E-mail: bartsch@dorea.co.za, P.O.Box 762, 9880

PLAN

'SCALE 1:50'



NOTE: 1. This drawing must be read in conjunction with Schedule 100-AH
 If required read in conjunction with SAGGA Glass Installation Information Schedule 100-S
 2. Shop drawings and sample to be approved by Architect prior to manufacturing
 3. All dimensions to be controlled on site and where applicable to match existing structure

DRAWING DESCRIPTION:

SCALE:

WINDOW AW002

1:50

COPYRIGHT

PROJECT TITLE

"BERGVILLE JUSTICE - COMPLETE
UPGRADING INCLUDING R & R"

PROJECT:	WCS 036745	REV. NO	DET. NO
DRAWN:	BVS /	R01 4-May-21	25500-060 -AW002
DATE:			
ISSUED:	4-May-21		

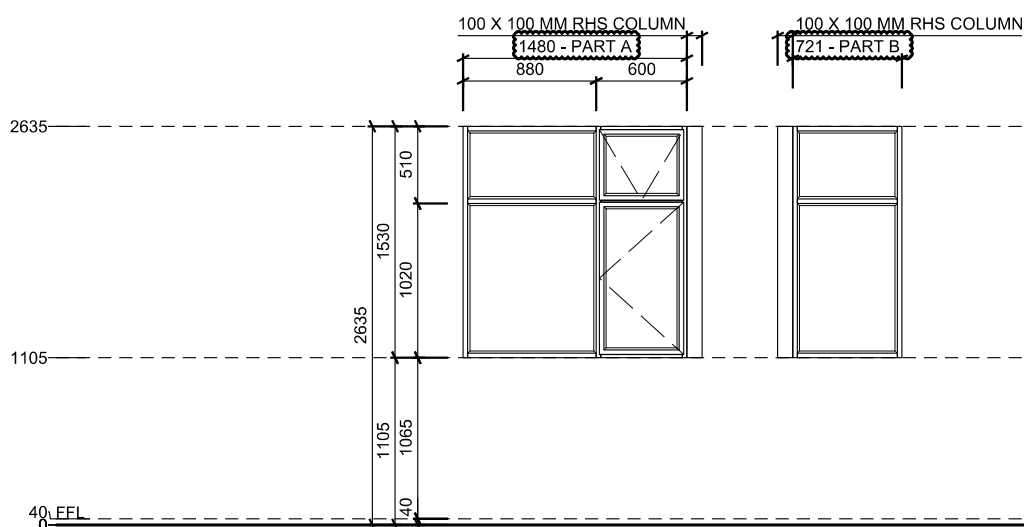
Bartsch

BARTSCH CONSULT (Pty) Ltd

HARRISMITH: Tel: 058 6223471, Fax: 058 623 0844,
 E-mail: bartsch@dorea.co.za, P.O.Box 762, 9880

PLAN

'SCALE 1:50'



NOTE: 1. This drawing must be read in conjunction with Schedule 100-AH
 If required read in conjunction with SAGGA Glass Installation Information Schedule 100-S
 2. Shop drawings and sample to be approved by Architect prior to manufacturing
 3. All dimensions to be controlled on site and where applicable to match existing structure

DRAWING DESCRIPTION:

SCALE:

WINDOW AW003

1:50

COPYRIGHT

PROJECT TITLE

"BERGVILLE JUSTICE - COMPLETE
 UPGRADING INCLUDING R & R"

PROJECT:	WCS 036745	REV. NO	DET. NO
DRAWN:	BVS /	R01 4-May-21	25500-060 -AW003
DATE:			
ISSUED:	4-May-21		

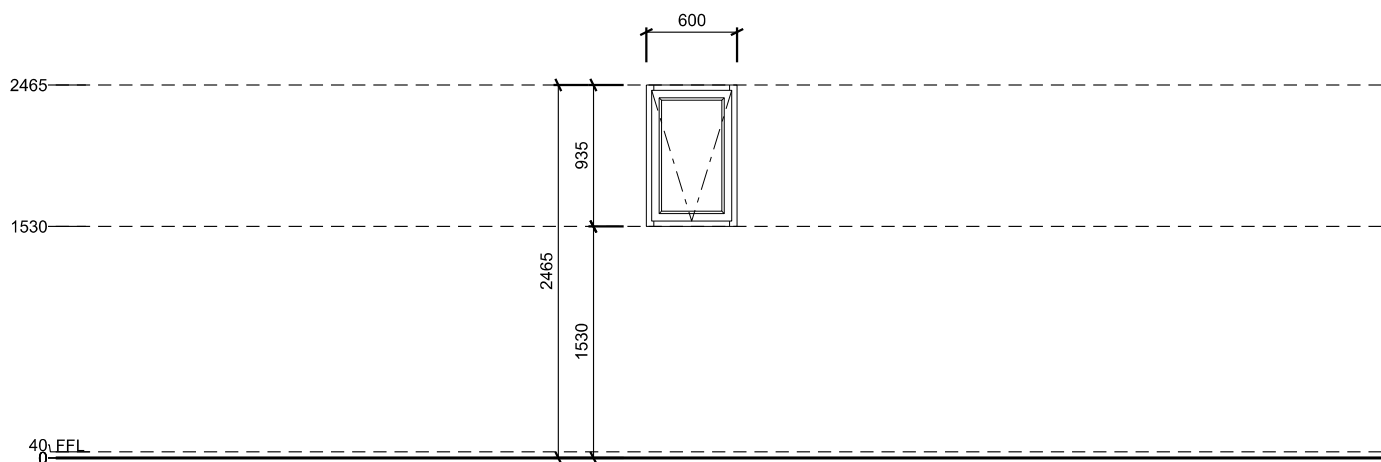
Bartsch

BARTSCH CONSULT (Pty) Ltd

HARRISMITH: Tel: 058 6223471, Fax: 058 623 0844,
 E-mail: bartsch@dorea.co.za, P.O.Box 762, 9880

PLAN

'SCALE 1:50'



NOTE: 1. This drawing must be read in conjunction with Schedule 100-AH
If required read in conjunction with SAGGA Glass Installation Information Schedule 100-S
2. Shop drawings and sample to be approved by Architect prior to manufacturing
3. All dimensions to be controlled on site and where applicable to match existing structure

DRAWING DESCRIPTION:

SCALE:

WINDOW AW004

1:50

COPYRIGHT

PROJECT TITLE

BERGVILLE JUSTICE - COMPLETE UPGRADING INCLUDING R & R

PROJECT:	WCS 036745	REV. NO	DET. NO
DRAWN:	BVS /	R00 22-Apr-21	25500-060 -AW004
DATE:			
ISSUED:	22-Apr-21		

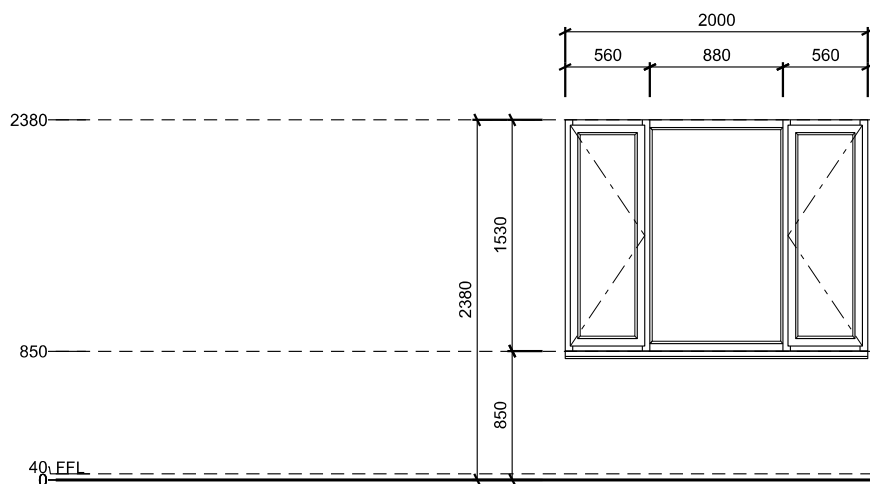
Bartsch

BARTSCH CONSULT (Pty) Ltd

HARRISMITH: Tel: 058 6223471, Fax: 058 623 0844,
E-mail: bartsch@dorea.co.za, P.O.Box 762, 9880

PLAN

'SCALE 1:50'



- NOTE: 1. This drawing must be read in conjunction with Schedule 100-AH
 If required read in conjunction with SAGGA Glass Installation Information Schedule 100-S
 2. Shop drawings and sample to be approved by Architect prior to manufacturing
 3. All dimensions to be controlled on site and where applicable to match existing structure

DRAWING DESCRIPTION:

SCALE:

WINDOW AW005

1:50

COPYRIGHT

PROJECT TITLE

BERGVILLE JUSTICE - COMPLETE UPGRADING INCLUDING R & R

PROJECT:	WCS 036745	REV. NO	DET. NO
DRAWN:	BVS /	R00 22-Apr-21	25500-060 -AW005
DATE:			
ISSUED:	22-Apr-21		

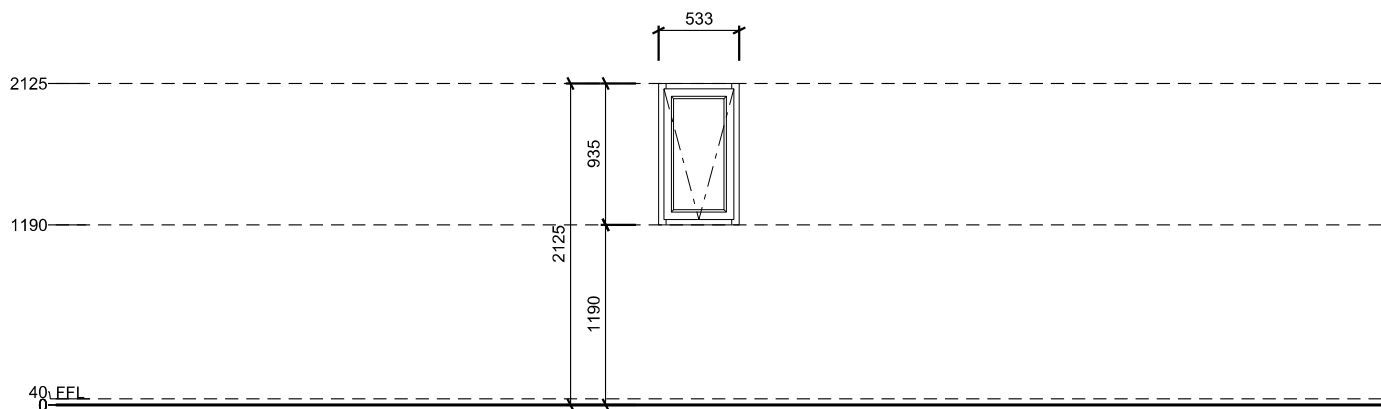
Bartsch

BARTSCH CONSULT (Pty) Ltd

HARRISMITH: Tel: 058 6223471, Fax: 058 623 0844,
 E-mail: bartsch@dorea.co.za, P.O.Box 762, 9880

PLAN

'SCALE 1:50'



NOTE: 1. This drawing must be read in conjunction with Schedule 100-AH
If required read in conjunction with SAGGA Glass Installation Information Schedule 100-S
2. Shop drawings and sample to be approved by Architect prior to manufacturing
3. All dimensions to be controlled on site and where applicable to match existing structure

DRAWING DESCRIPTION:

SCALE:

WINDOW AW006

1:50

COPYRIGHT

PROJECT TITLE

BERGVILLE JUSTICE - COMPLETE UPGRADING INCLUDING R & R

PROJECT:	WCS 036745	REV. NO	DET. NO
DRAWN:	BVS /	R00 22-Apr-21	25500-060 -AW006
DATE:			
ISSUED:	22-Apr-21		

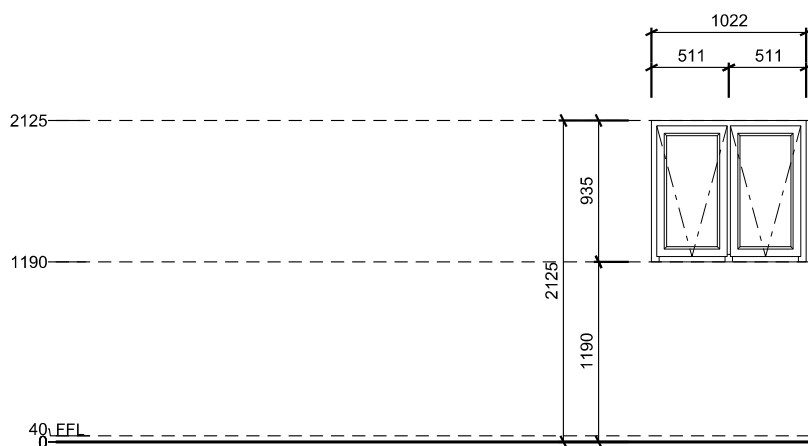
Bartsch

BARTSCH CONSULT (Pty) Ltd

HARRISMITH: Tel: 058 6223471, Fax: 058 623 0844,
E-mail: bartsch@dorea.co.za, P.O.Box 762, 9880

PLAN

'SCALE 1:50'



NOTE: 1. This drawing must be read in conjunction with Schedule 100-AH
If required read in conjunction with SAGGA Glass Installation Information Schedule 100-S
2. Shop drawings and sample to be approved by Architect prior to manufacturing
3. All dimensions to be controlled on site and where applicable to match existing structure

DRAWING DESCRIPTION:

SCALE:

WINDOW AW007

1:50

COPYRIGHT

PROJECT TITLE

BERGVILLE JUSTICE - COMPLETE UPGRADING INCLUDING R & R

PROJECT:	WCS 036745	REV. NO	DET. NO
DRAWN:	BVS /	R00 22-Apr-21	25500-060 -AW007
DATE:			
ISSUED:	22-Apr-21		

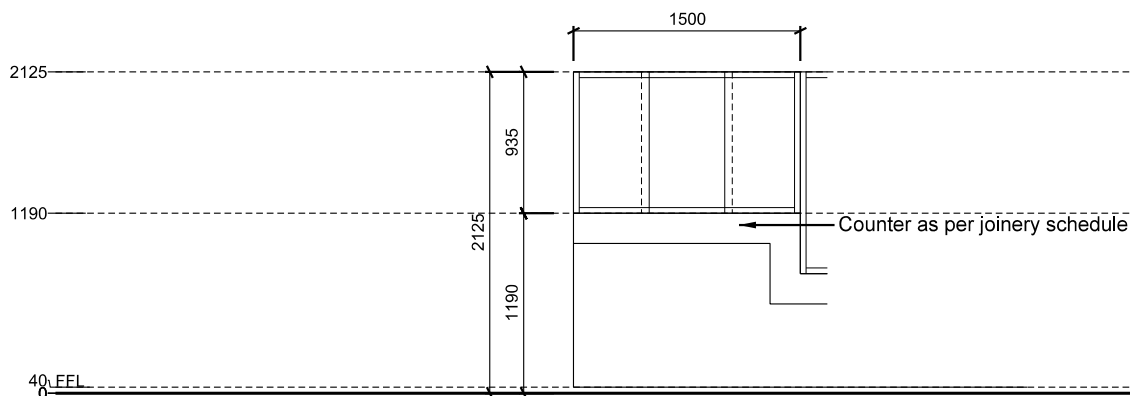
Bartsch

BARTSCH CONSULT (Pty) Ltd

HARRISMITH: Tel: 058 6223471, Fax: 058 623 0844,
E-mail: bartsch@dorea.co.za, P.O.Box 762, 9880

PLAN

'SCALE 1:50'



NOTE: 1. This drawing must be read in conjunction with Schedule 100-AH
If required read in conjunction with SAGGA Glass Installation Information Schedule 100-S
2. Shop drawings and sample to be approved by Architect prior to manufacturing
3. All dimensions to be controlled on site and where applicable to match existing structure

DRAWING DESCRIPTION:

SCALE:

BULLET RESITANT VIEW PANEL - BVP001

1:50

COPYRIGHT

PROJECT TITLE

**"BERGVILLE JUSTICE - COMPLETE
UPGRADING INCLUDING R & R"**

PROJECT:	WCS 036745	REV. NO	DET. NO
DRAWN:	IKP /	R00 6-May-21	"25500-060- BVP001"
DATE:			
ISSUED:	6-May-21		

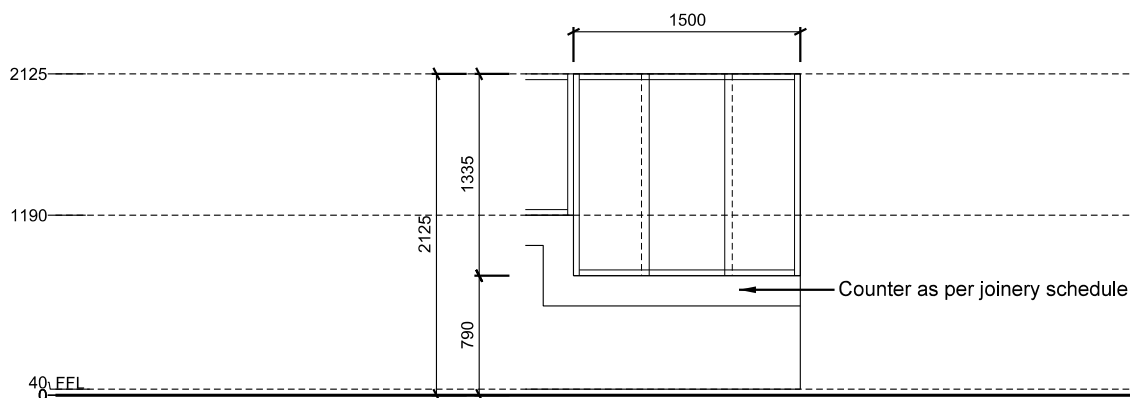
B a r t s c h

BARTSCH CONSULT (Pty) Ltd

HARRISMITH: Tel: 058 6223471, Fax: 058 623 0844,
E-mail: bartsch@dorea.co.za, P.O.Box 762, 9880

PLAN

'SCALE 1:50'



- NOTE: 1. This drawing must be read in conjunction with Schedule 100-AH
 If required read in conjunction with SAGGA Glass Installation Information Schedule 100-S
 2. Shop drawings and sample to be approved by Architect prior to manufacturing
 3. All dimensions to be controlled on site and where applicable to match existing structure

DRAWING DESCRIPTION:

SCALE:

BULLET RESITANT VIEW PANEL - BVP002

1:50

COPYRIGHT

PROJECT TITLE

**"BERGVILLE JUSTICE - COMPLETE
UPGRADING INCLUDING R & R"**

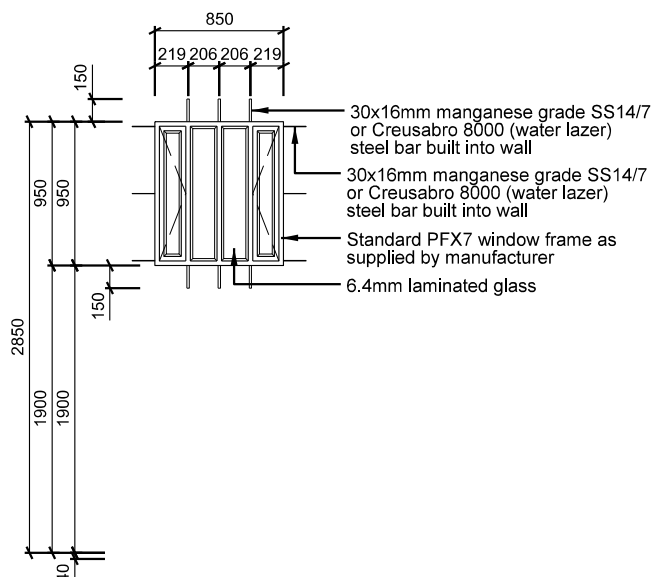
PROJECT:	WCS 036745	REV. NO	DET. NO
DRAWN:	IKP /	R00 6-May-21	"25500-060- BVP002"
DATE:			
ISSUED:	6-May-21		

B a r t s c h

BARTSCH CONSULT (Pty) Ltd

HARRISMITH: Tel: 058 6223471, Fax: 058 623 0844,
E-mail: bartsch@dorea.co.za, P.O.Box 762, 9880

WINDOW DESCRIPTION	Mild steel window comprising standard residential profiles, coupled with 3 mm steel plates, and mild steel rectangular sections only, all to detail, with side hung open-out sashes hung on.
FRAME FINISH:	Surface to be clean and dry. Remove surface contaminants using Plascon Aquasolv Degreaser (GR 1) with bristle brush or Brillo pads. Rinse thoroughly with tap water until surface is water break-free. Remove rust and millscale by abrasive blasting to ISO 8501 - 01:1988 - S32½ or by hand/ mechanical wire brushing to S3 of the same standard. Allow to dry completely and prime within 4 hours of cleaning. Prime with one coat of Professional High Build Zinc Phosphate Primer (UC 170) with an overcoating time of 16 hours and finish with two coats of Water based Enamel (WBE) with 4 hours drying time between coats, for a maintenance cycle of 3 years in a C3 - industrial environment.
GLAZING:	7.52 mm HI laminated clear glass, fixed with rubber gaskets & neutral curing silicone seal and 10 x 10 x 1,6 mm steel glazing beads in complete one-piece construction per pane.
FURNITURE:	Steel butterfly catches per DPW sample, with profiled pull handles acc. to detail.



- NOTE: 1. This drawing must be read in conjunction with drawing 042-001, 042-003, 042-004, 042-005 and 042-006 and SAGGA Glass Installation Information 100-S.
2. Shop drawings and sample to be approved by Architect prior to manufacturing.
3. All dimensions to be controlled on site and where applicable to match existing structure.
4. All mild steel to be hot dipped galvanised.
5. Powder coat to Architect's approval.

DRAWING DESCRIPTION:

SCALE:

WINDOW W001

1:50

COPYRIGHT

PROJECT TITLE

**BERGVILLE JUSTICE - COMPLETE
UPGRADING INCLUDING R & R**

PROJECT:	WCS 036745	REV. NO	DET. NO
DRAWN:	BVS /	R00 22-Apr-21	25500-060 -W001
DATE:			
ISSUED:	22-Apr-21		

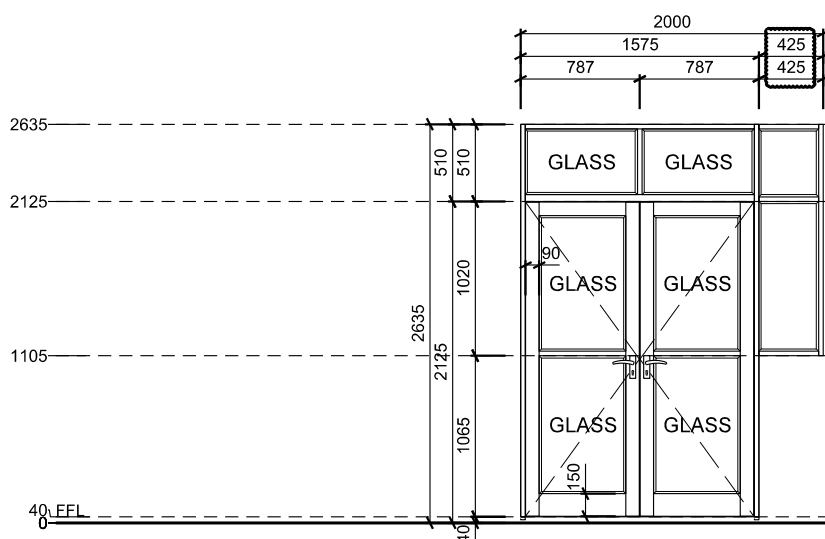
B a r t s c h

BARTSCH CONSULT (Pty) Ltd

HARRISMITH: Tel: 058 6223471, Fax: 058 623 0844,
E-mail: bartsch@dorea.co.za, P.O.Box 762, 9880

PLAN

'SCALE 1:50'



- NOTE: 1. This drawing must be read in conjunction with Schedule 100-AH
 If required read in conjunction with SAGGA Glass Installation Information Schedule 100-S
 2. Shop drawings and sample to be approved by Architect prior to manufacturing
 3. All dimensions to be controlled on site and where applicable to match existing structure

DRAWING DESCRIPTION:

SCALE:

DOOR TYPE - ALHD001

1:50

COPYRIGHT

PROJECT TITLE

"BERGVILLE JUSTICE - COMPLETE
UPGRADING INCLUDING R & R"

PROJECT:	WCS 036745	REV. NO	DET. NO
DRAWN:	BVS /	R01 4-May-21	25500-070 -ALHD001
DATE:			
ISSUED:	4-May-21		

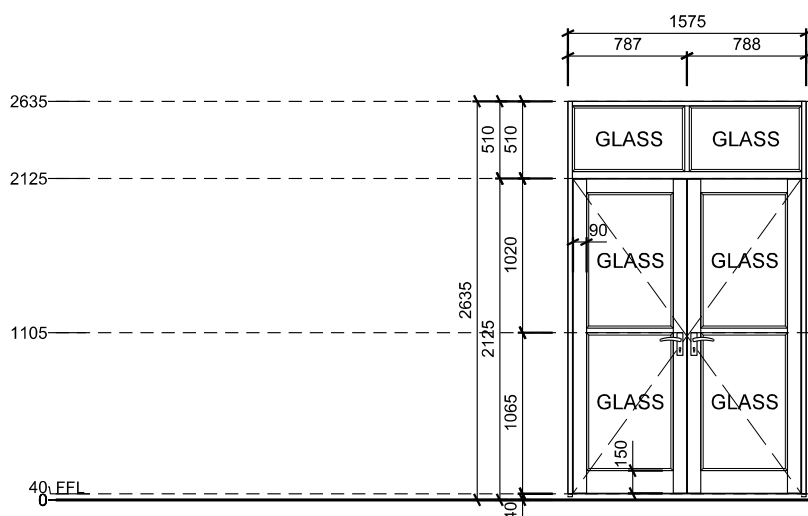
Bartsch

BARTSCH CONSULT (Pty) Ltd

HARRISMITH: Tel: 058 6223471, Fax: 058 623 0844,
E-mail: bartsch@dorea.co.za, P.O.Box 762, 9880

PLAN

'SCALE 1:50'



- NOTE: 1. This drawing must be read in conjunction with Schedule 100-AH
 If required read in conjunction with SAGGA Glass Installation Information Schedule 100-S
 2. Shop drawings and sample to be approved by Architect prior to manufacturing
 3. All dimensions to be controlled on site and where applicable to match existing structure

DRAWING DESCRIPTION:

SCALE:

DOOR TYPE - ALHD002

1:50

COPYRIGHT

PROJECT TITLE

**BERGVILLE JUSTICE - COMPLETE
UPGRADING INCLUDING R & R**

PROJECT:	WCS 036745	REV. NO	DET. NO
DRAWN:	BVS /	R00 22-Apr-21	25500-070 -ALHD002
DATE:			
ISSUED:	22-Apr-21		

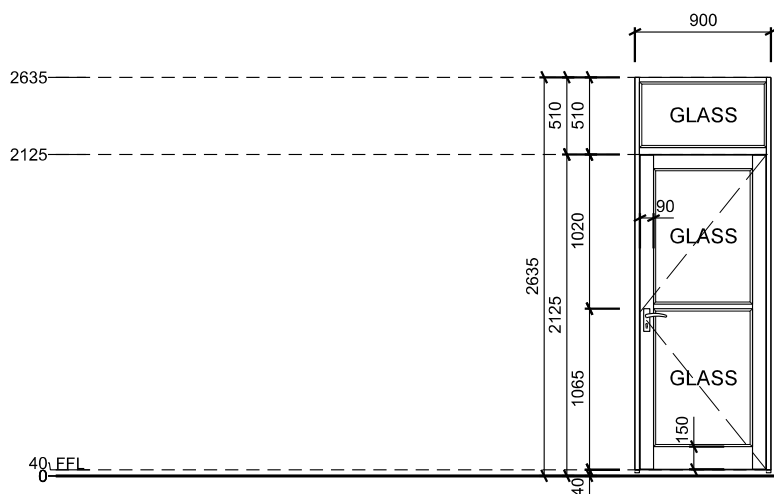
Bartsch

BARTSCH CONSULT (Pty) Ltd

HARRISMITH: Tel: 058 6223471, Fax: 058 623 0844,
 E-mail: bartsch@dorea.co.za, P.O.Box 762, 9880

PLAN

'SCALE 1:50'



NOTE: 1. This drawing must be read in conjunction with Schedule 100-AH
If required read in conjunction with SAGGA Glass Installation Information Schedule 100-S
2. Shop drawings and sample to be approved by Architect prior to manufacturing
3. All dimensions to be controlled on site and where applicable to match existing structure

DRAWING DESCRIPTION:

SCALE:

DOOR TYPE - ALHS001

1:50

COPYRIGHT

PROJECT TITLE

BERGVILLE JUSTICE - COMPLETE UPGRADING INCLUDING R & R

PROJECT:	WCS 036745	REV. NO	DET. NO
DRAWN:	BVS /	R00 22-Apr-21	25500-070 -ALHS001
DATE:			
ISSUED:	22-Apr-21		

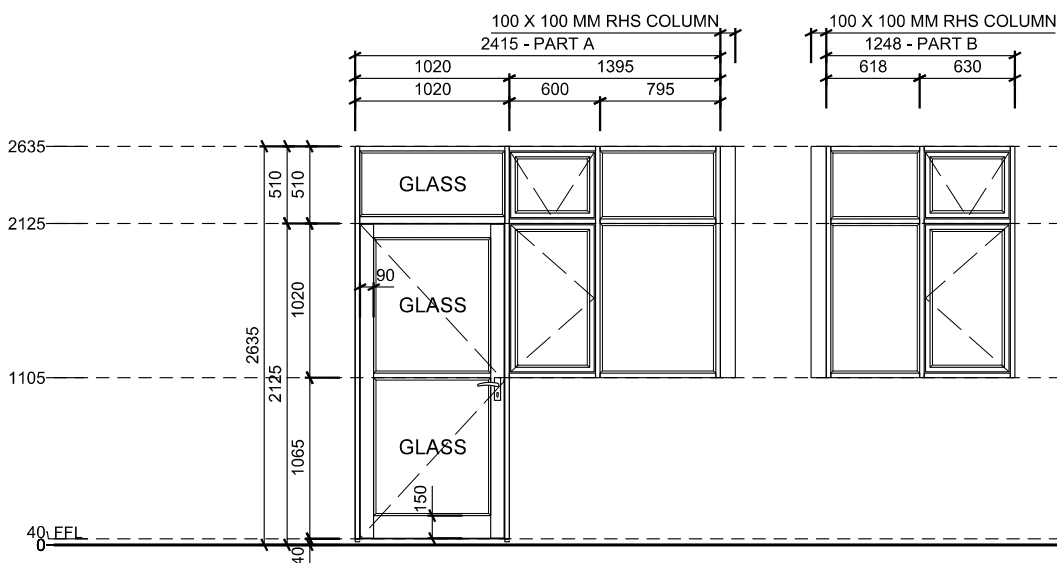
Bartsch

BARTSCH CONSULT (Pty) Ltd

HARRISMITH: Tel: 058 6223471, Fax: 058 623 0844,
E-mail: bartsch@dorea.co.za, P.O.Box 762, 9880

PLAN

'SCALE 1:50'



- NOTE: 1. This drawing must be read in conjunction with Schedule 100-AH
If required read in conjunction with SAGGA Glass Installation Information Schedule 100-S
2. Shop drawings and sample to be approved by Architect prior to manufacturing
3. All dimensions to be controlled on site and where applicable to match existing structure

DRAWING DESCRIPTION:

SCALE:

DOOR TYPE - ALHS002

1:50

COPYRIGHT

PROJECT TITLE

**BERGVILLE JUSTICE - COMPLETE
UPGRADING INCLUDING R & R**

PROJECT:	WCS 036745	REV. NO	DET. NO
DRAWN:	BVS /	R00	25500-070
DATE:		22-Apr-21	-ALHS002
ISSUED:	22-Apr-21		

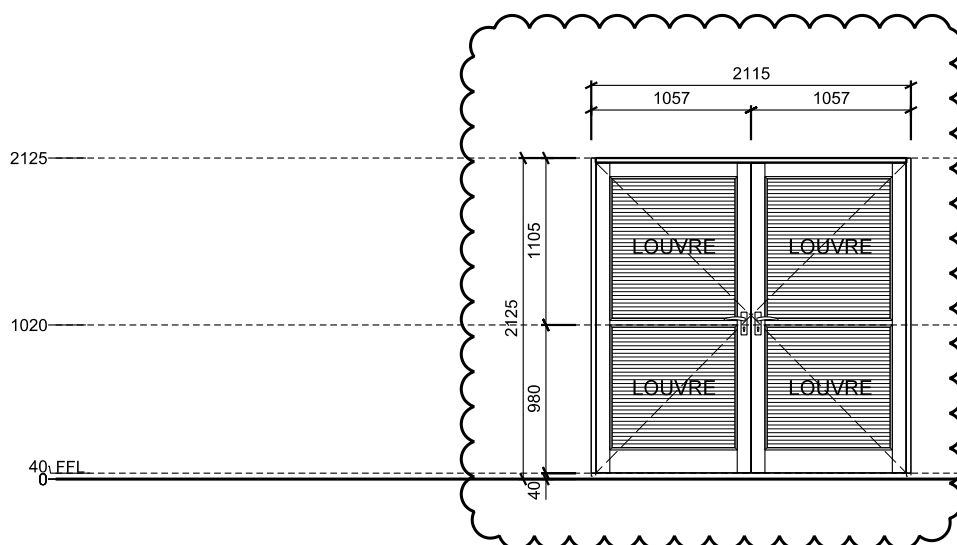
Bartsch

BARTSCH CONSULT (Pty) Ltd

HARRISMITH: Tel: 058 6223471, Fax: 058 623 0844,
E-mail: bartsch@dorea.co.za, P.O.Box 762, 9880

PLAN

'SCALE 1:50'



- NOTE: 1. This drawing must be read in conjunction with Preambles drawing 070-014,
If required read in conjunction with SAGGA Glass Installation Information Schedule 100-S
2. Shop drawings and sample to be approved by Architect prior to manufacturing
3. All dimensions to be controlled on site and where applicable to match existing structure

DRAWING DESCRIPTION:

SCALE:

DOOR TYPE - ALLD001

1:50

COPYRIGHT

PROJECT TITLE

"BERGVILLE JUSTICE - COMPLETE
UPGRADING INCLUDING R & R"

PROJECT:	WCS 036745	REV. NO	DET. NO
DRAWN:	TB /	R01 13-May-21	25500-070-ALLD001
DATE:			
ISSUED:	13-May-21		

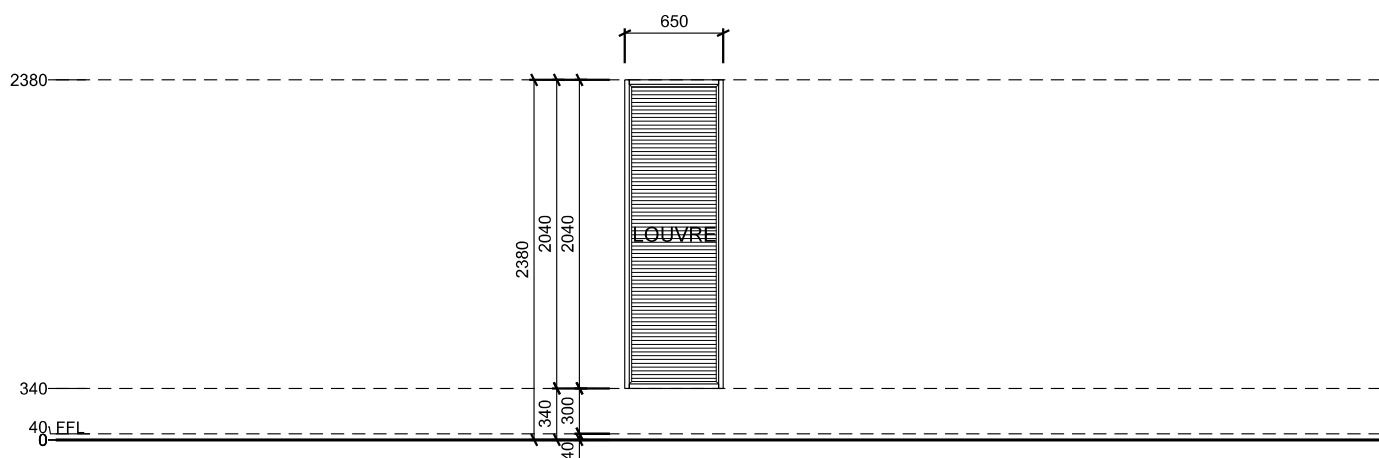
Bartsch

BARTSCH CONSULT (Pty) Ltd

HARRISMITH: Tel: 058 6223471, Fax: 058 623 0844,
E-mail: bartsch@dorea.co.za, P.O.Box 762, 9880

PLAN

'SCALE 1:50'



NOTE: 1. This drawing must be read in conjunction with Preambles drawing 070-014,
If required read in conjunction with SAGGA Glass Installation Information Schedule 100-S
2. Shop drawings and sample to be approved by Architect prior to manufacturing
3. All dimensions to be controlled on site and where applicable to match existing structure

DRAWING DESCRIPTION:

SCALE:

DOOR TYPE - ALLP001

1:50

COPYRIGHT

PROJECT TITLE

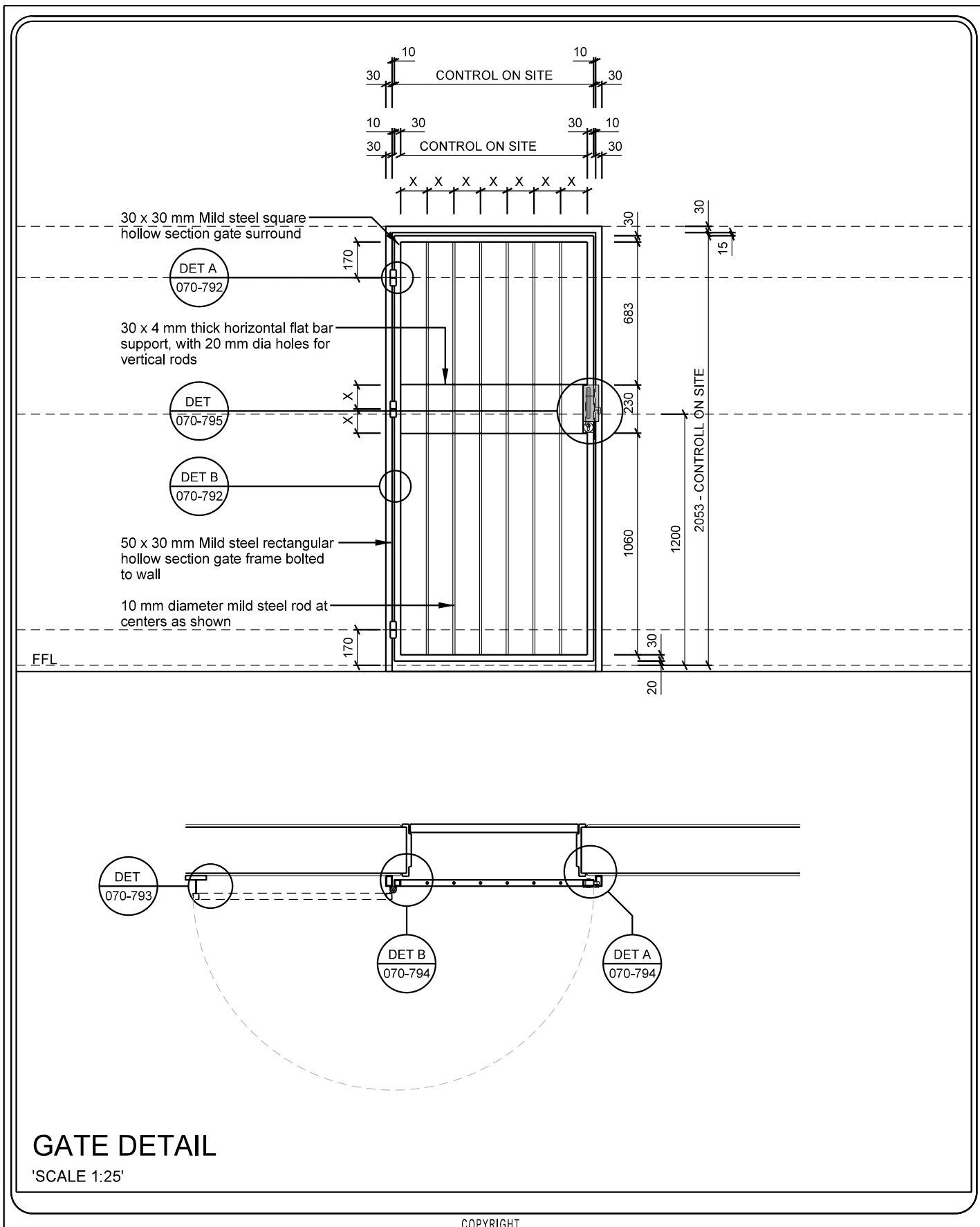
"BERGVILLE JUSTICE - COMPLETE
UPGRADING INCLUDING R & R"

PROJECT:	WCS 036745	REV. NO	DET. NO
DRAWN:	BVS /	R00 6-May-21	25500-070 -ALLP001
DATE:			
ISSUED:	6-May-21		

Bartsch

BARTSCH CONSULT (Pty) Ltd

HARRISMITH: Tel: 058 6223471, Fax: 058 623 0844,
E-mail: bartsch@dorea.co.za, P.O.Box 762, 9880



DRAWING DESCRIPTION:

MILD STEEL - SINGLE SWING GATE - MSS001

PROJECT:	WCS 036745	SCALE:	REV. NO	DET. NO
DRAWN:	BVS /	1:25	R00	25500-070
DATE:			22-Apr-21	-MSS001
ISSUED:				

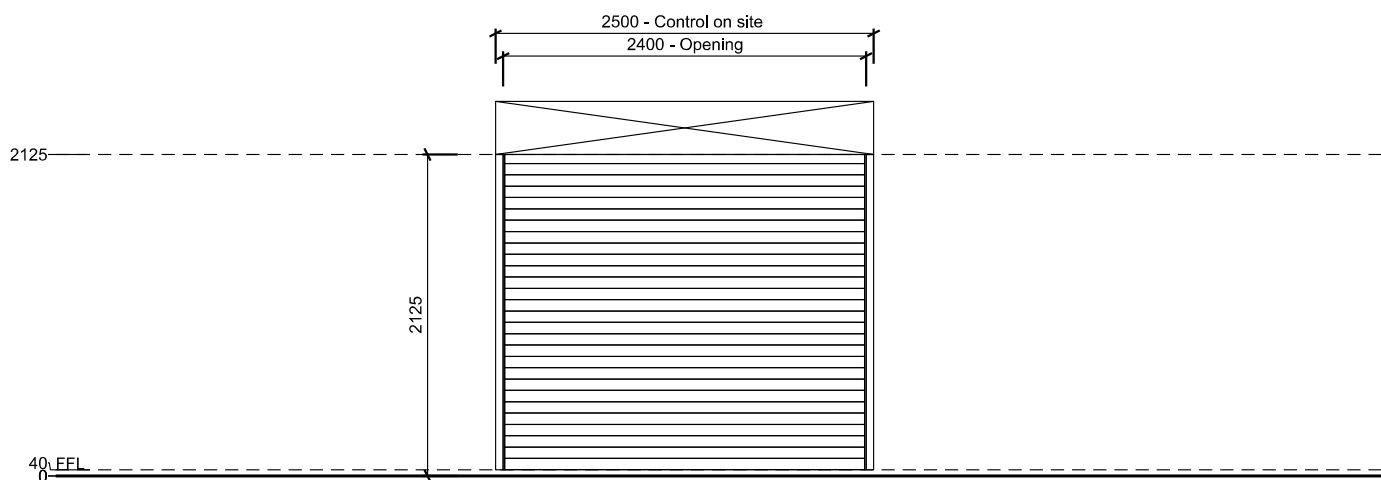
Bartsch

BARTSCH CONSULT (Pty) Ltd

HARRISMITH: Tel(058) 6223471, Fax: 6230844,
E-mail: bartsch@dorea.co.za, P.O.Box 762, 9880

PLAN

'SCALE 1:50'



NOTE: 1. This drawing must be read in conjunction with Codebook Schedule 100-AH
If required read in conjunction with SAGGA Glass Installation Information Schedule 100-S
2. Shop drawings and sample to be approved by Architect prior to manufacturing
3. All dimensions to be controlled on site and where applicable to match existing structure

DRAWING DESCRIPTION:

SCALE:

DOOR TYPE - RS-PU001

1:50

COPYRIGHT

PROJECT TITLE

"BERGVILLE JUSTICE - COMPLETE
UPGRADING INCLUDING R & R"

PROJECT:	WCS 036745	REV. NO	DET. NO
DRAWN:	BVS /	R00 5-May-21	25500-070 -RS-PU001
DATE:			
ISSUED:	5-May-21		

Bartsch

BARTSCH CONSULT (Pty) Ltd

HARRISMITH: Tel: 058 6223471, Fax: 058 623 0844,
E-mail: bartsch@dorea.co.za, P.O.Box 762, 9880

PROJECT TITLE			
"BERGVILLE JUSTICE - COMPLETE UPGRADING INCLUDING R & R"			
PROJECT:	WCS 036745	REV. NO	DET. NO
DRAWN:	BVS /	R01 4-May-21	25500-070- SEC-CVD001
DATE:			
ISSUED:	4-May-21		

COPYRIGHT

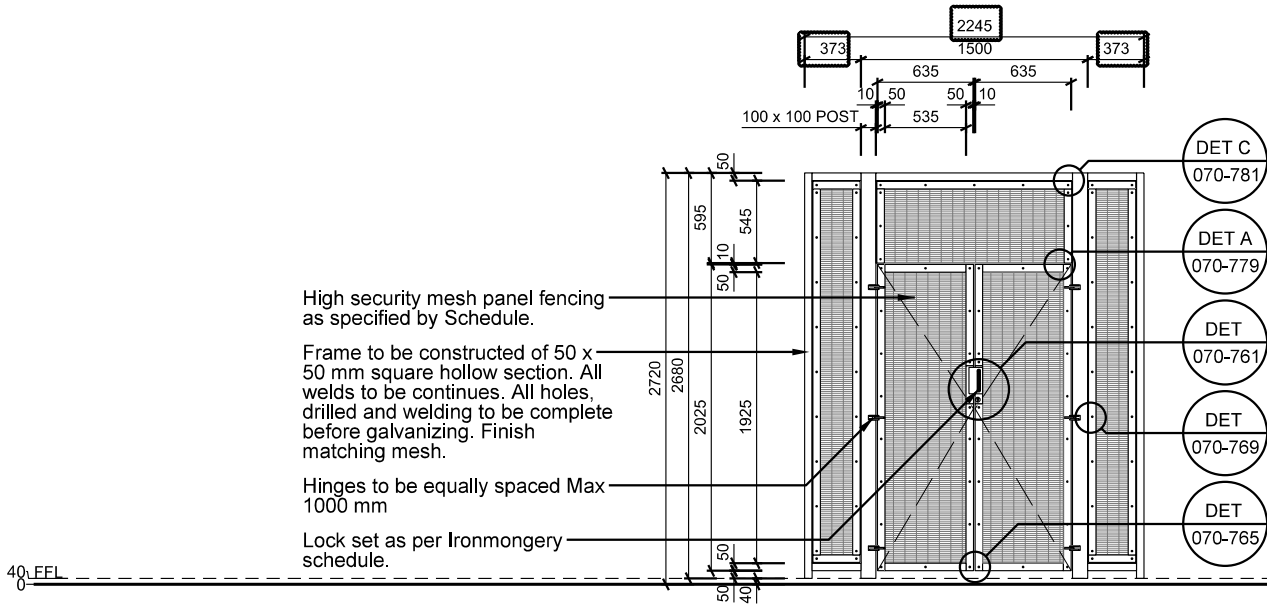
DOOR TYPE - SEC-CVD001

1:50

DRAWING DESCRIPTION:

SCALE:

PLAN
'SCALE 1:50'

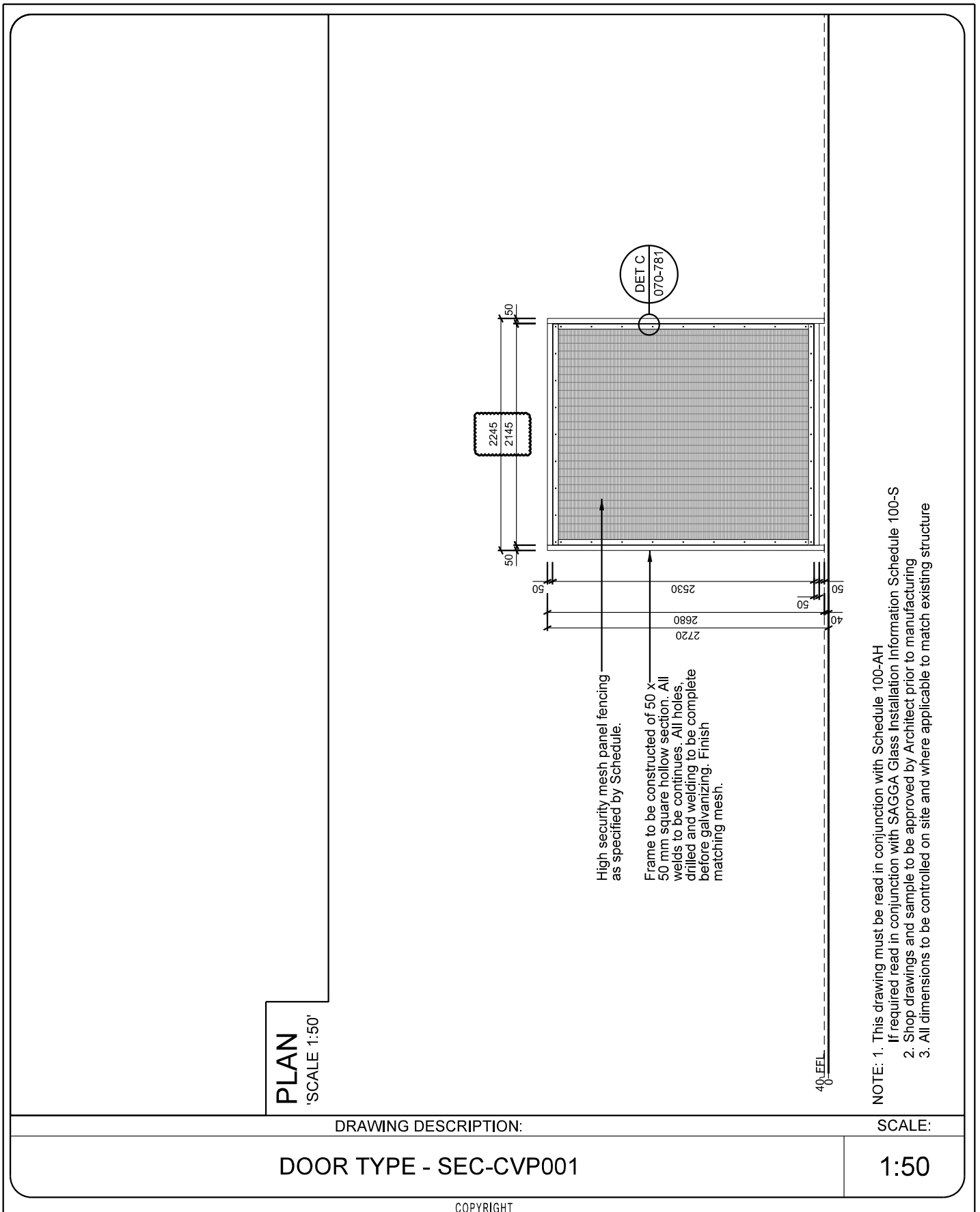


NOTE: 1. This drawing must be read in conjunction with Schedule 100-AH
If required read in conjunction with SAGGA Glass Installation Information Schedule 100-S
2. Shop drawings and sample to be approved by Architect prior to manufacturing
3. All dimensions to be controlled on site and where applicable to match existing structure

Bartsch

BARTSCH CONSULT (Pty) Ltd

HARRISMITH: Tel: 058 6223471, Fax: 058 623 0844,
E-mail: bartsch@dorea.co.za, P.O.Box 762, 9880



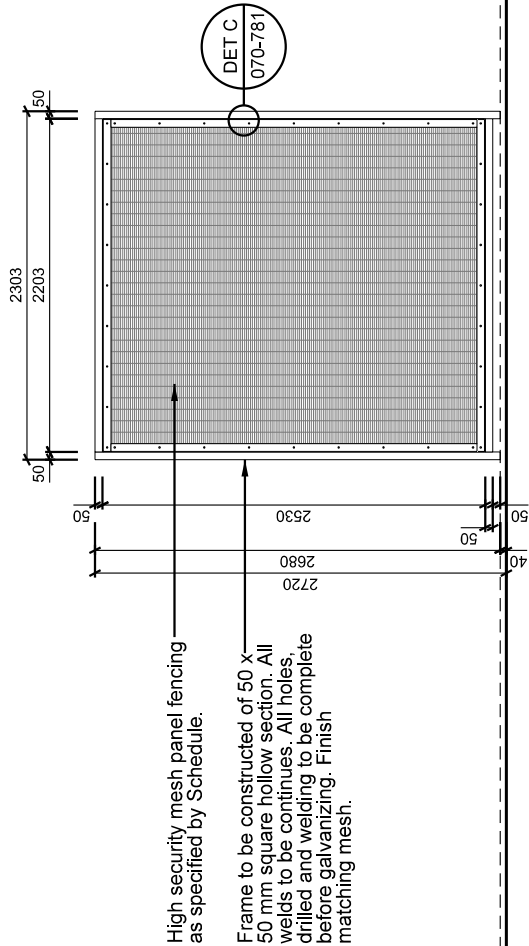
PROJECT TITLE			
"BERGVILLE JUSTICE - COMPLETE UPGRADING INCLUDING R & R"			
PROJECT:	WCS 036745	REV. NO	DET. NO
DRAWN:	BVS /	R01 4-May-21	25500-070-SEC -CVP001
DATE:			
ISSUED:	6-May-21		

Bartsch

BARTSCH CONSULT (Pty) Ltd

HARRISMITH: Tel: 058 6223471, Fax: 058 623 0844,
E-mail: bartsch@dorea.co.za, P.O.Box 762, 9880

PLAN
SCALE 1:50'



NOTE: 1. This drawing must be read in conjunction with Schedule 100-AH
If required read in conjunction with SAGGA Glass Installation Information Schedule 100-S
2. Shop drawings and sample to be approved by Architect prior to manufacturing
3. All dimensions to be controlled on site and where applicable to match existing structure

DRAWING DESCRIPTION:

SCALE:

DOOR TYPE - SEC-CVP002

1:50

COPYRIGHT

PROJECT TITLE

**"BERGVILLE JUSTICE - COMPLETE
UPGRADING INCLUDING R & R"**

PROJECT:	WCS 036745	REV. NO	DET. NO
DRAWN:	BVS /	R00 4-May-21	25500-070- SEC-CVP002
DATE:			
ISSUED:	6-May-21		

B a r t s c h

BARTSCH CONSULT (Pty) Ltd

HARRISMITH: Tel: 058 6223471, Fax: 058 623 0844,
E-mail: bartsch@dorea.co.za, P.O.Box 762, 9880

PROJECT TITLE			
BERGVILLE JUSTICE - COMPLETE UPGRADING INCLUDING R & R			
PROJECT:	WCS 036745	REV. NO	DET. NO
DRAWN:	BVS /	R00 22-Apr-21	25500-070- SEC-CVS001
DATE:			
ISSUED:	22-Apr-21		

COPYRIGHT

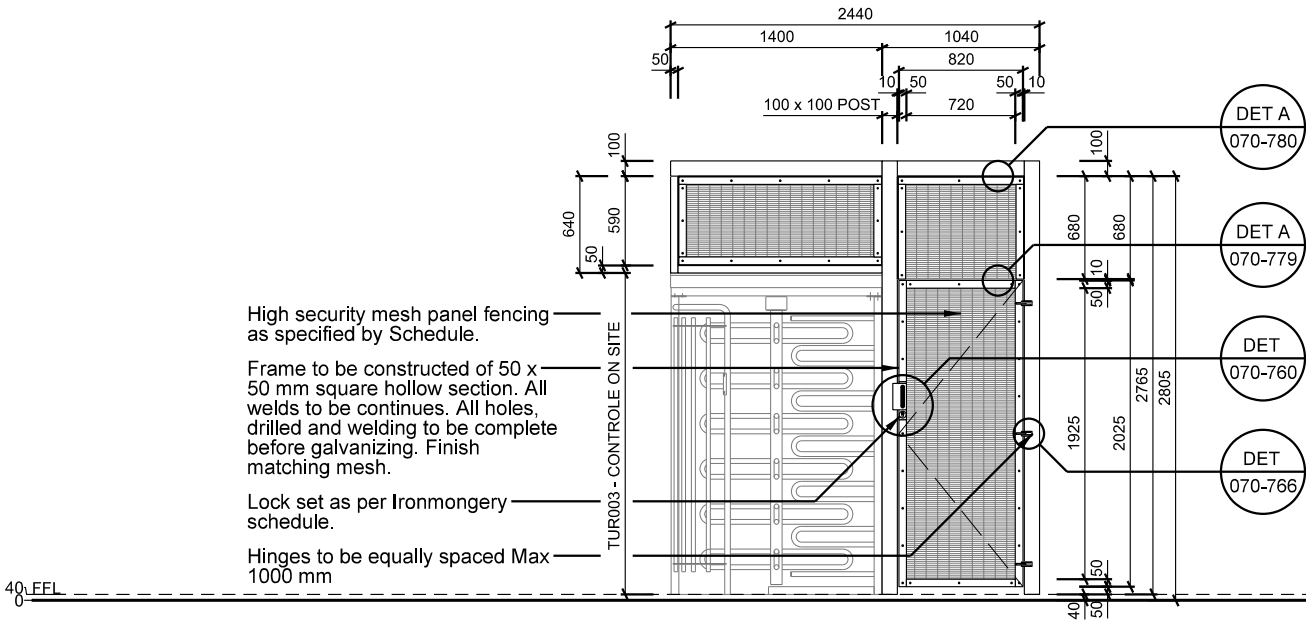
DOOR TYPE - SEC-CVS001

1:50

DRAWING DESCRIPTION:

SCALE:

PLAN
'SCALE 1:50'

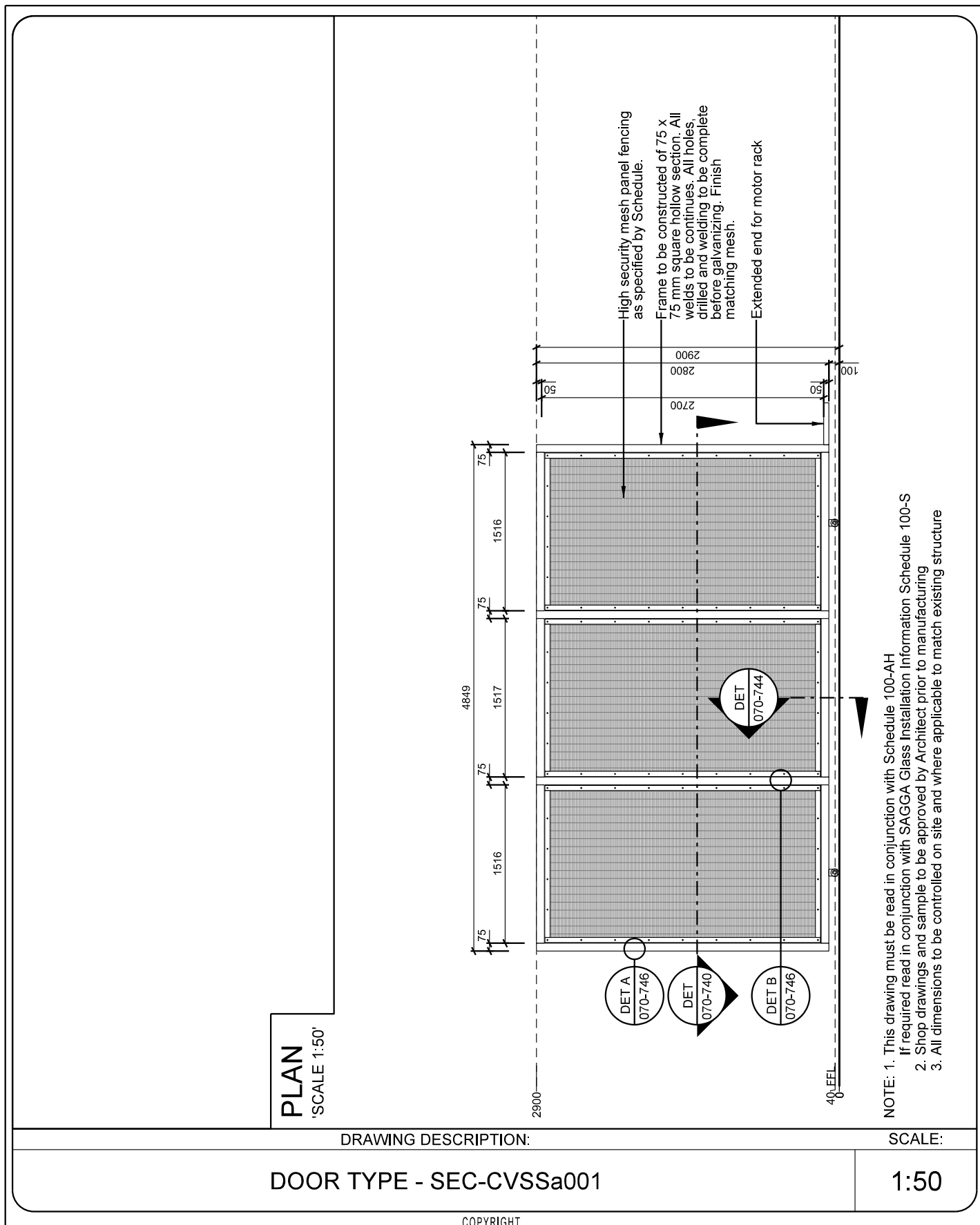


NOTE: 1. This drawing must be read in conjunction with Schedule 100-AH
If required read in conjunction with SAGGA Glass Installation Information Schedule 100-S
2. Shop drawings and sample to be approved by Architect prior to manufacturing
3. All dimensions to be controlled on site and where applicable to match existing structure

Bartsch

BARTSCH CONSULT (Pty) Ltd

HARRISMITH: Tel: 058 6223471, Fax: 058 623 0844,
E-mail: bartsch@doree.co.za, P.O.Box 762, 9880



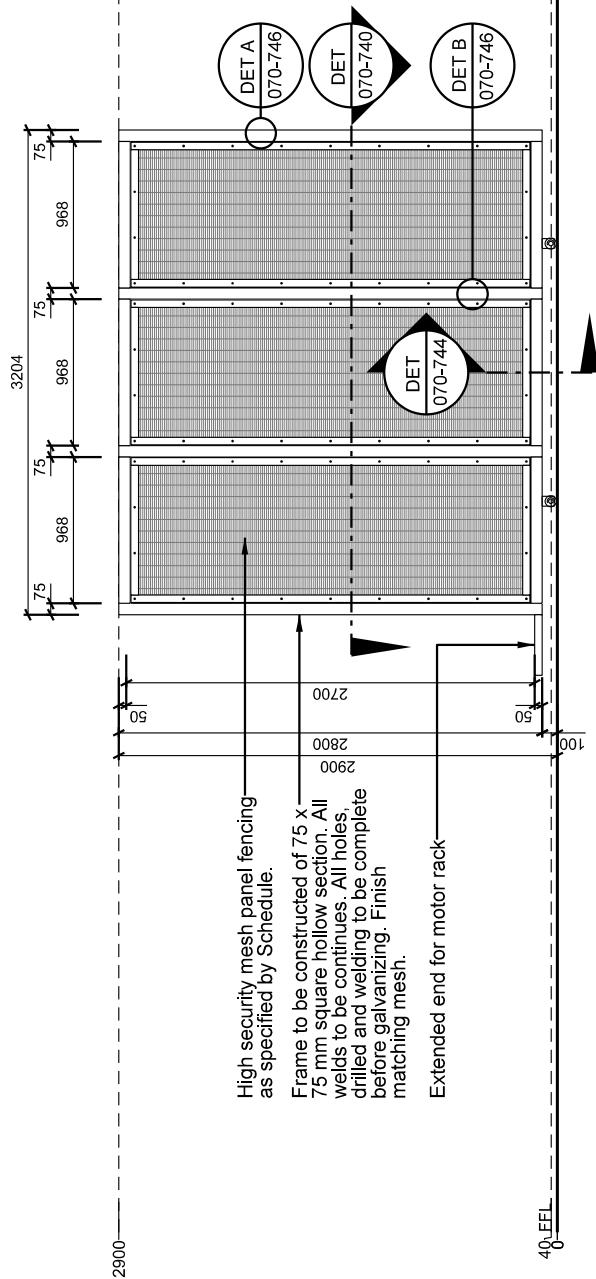
PROJECT TITLE			
BERGVILLE JUSTICE - COMPLETE UPGRADING INCLUDING R & R			
PROJECT:	WCS 036745	REV. NO	DET. NO
DRAWN:	BVS /	R00 22-Apr-21	25500-070-SEC-CVSSa001
DATE:			
ISSUED:	22-Apr-21		

Bartsch

BARTSCH CONSULT (Pty) Ltd

HARRISMITH: Tel: 058 6223471, Fax: 058 623 0844,
E-mail: bartsch@dorea.co.za, P.O.Box 762, 9880

PLAN
SCALE 1:50'



NOTE: 1. This drawing must be read in conjunction with Schedule 100-AH
If required read in conjunction with SAGGA Glass Installation Information Schedule 100-S
2. Shop drawings and sample to be approved by Architect prior to manufacturing
3. All dimensions to be controlled on site and where applicable to match existing structure

DRAWING DESCRIPTION:

SCALE:

DOOR TYPE - SEC-CVSSa002

1:50

COPYRIGHT

PROJECT TITLE

**BERGVILLE JUSTICE - COMPLETE
UPGRADING INCLUDING R & R**

PROJECT:	WCS 036745	REV. NO	DET. NO
DRAWN:	BVS /	R00 22-Apr-21	25500-070-SEC -CVSSa002
DATE:			
ISSUED:	22-Apr-21		

Bartsch

BARTSCH CONSULT (Pty) Ltd

HARRISMITH: Tel: 058 6223471, Fax: 058 623 0844,
E-mail: bartsch@dorea.co.za, P.O.Box 762, 9880

T2.2 RETURNABLE DOCUMENTS REQUIRED FOR TENDER EVALUATION PURPOSES

PA-11: DECLARATION OF INTEREST AND BIDDER'S PAST SUPPLY CHAIN MANAGEMENT PRACTICES

Failure to complete this form in full and signed by the duly authorized person, as indicated on PA-15.1 or PA-15.3, shall render the tender non-responsive and will be removed from any and all further contention.

Project title:	<i>Bergville magistrate: repairs and renovations including upgrade and installation of borehole</i>		
Bid no:	<i>DBN21/10/02</i>	Reference no:	<i>6203/0188/26/4</i>

The following particulars must be furnished. In the case of a joint venture, separate declarations in respect of each partner must be completed and submitted.

1. CIDB REGISTRATION NUMBER (if applicable)

--

2. Any legal person, including persons employed by the State¹; or persons having a kinship with persons employed by the state, including a blood relationship, may make an offer or offers in terms of this invitation to bid (includes a price quotation, advertised competitive bid, limited bid or proposal). In view of possible allegations of favouritism, should the resulting bid, or part thereof, be awarded to persons employed by the state, or to persons connected with or related to them, it is required that the bidder or his/her authorised representative declare his/her position in relation to the evaluating/adjudicating authority and/or take an oath declaring his/her interest, where:

- The bidder is employed by the state; and/or
- The legal person on whose behalf the bidding document is signed, has a relationship with persons/a person who are/is involved in the evaluation and or adjudication of the bid(s), or where it is known that such a relationship exists between the person or persons for or on whose behalf the declarant acts and persons who are involved with the evaluation and or adjudication of the bid.

3. In order to give effect to the above, the following questionnaire must be completed and submitted with the bid.

- 3.1 Full Name of bidder or his or her representative:
- 3.2 Identity number:.....
- 3.3 Position occupied in the Company (director, trustees, shareholder² ect)
- 3.4 Company Registration Number:
- 3.5 Tax Reference umber:.....
- 3.6 VAT Registration Number:

3.6.1 The names of all directors / trustees / shareholders / members, their individual identity numbers, tax reference numbers and, if applicable, employee / persal numbers must be indicated in paragraph 3 below.

¹ "State" means –

- (a) any national or provincial department, national or provincial public entity or constitutional institution within the meaning of the Public Finance Management Act, 1999 (Act No. 1 of 1999);
- (b) any municipality or municipal entity;
- (c) provincial legislature;
- (d) national Assembly or the national Council of provinces; or
- (e) Parliament.

² "Shareholder" means –

- (a) a person who owns shares in the company and is actively involved in the management of the enterprise or business and exercise control over the enterprise

3.7 Are you or any person connected with the bidder presently employed by the state?

☐ YES ☐ NO

3.7.1 If so, furnish the following particulars:

Name of person / director / trustees / shareholder / member:

Name of state institution at which you or the person

is connected to the bidder is employed

Position occupied in the state institution:

Any other particulars:

.....
.....

3.8 Did you or your spouse, or any of the company's directors / trustees / shareholders / members or their spouses conduct business with the state in the previous twelve months?

☐ YES ☐ NO

3.8.1 If so, furnish particulars:

.....

3.9 Do you, or any person connected with the bidder, have any relationship (family, friend, other) with a person employed by the state and who may be involved with the evaluation and or adjudication of this bid?

☐ YES ☐ NO

3.9.1 If so, furnish particulars.

.....
.....

3.10 Are you, or any person connected with the bidder, aware of any relationship (family, friend, other) between the bidder and any person employed by the state who may be involved with the evaluation and or adjudication of this bid? ☐ YES ☐ NO

3.10.1 If so, furnish particulars.

.....
.....

3.11 Do you or any of the directors /trustees/shareholders/ members of the company have any interest in any other related companies whether or not they are bidding for this contract? ☐ YES ☐ NO

3.11.1 If so, furnish particulars:

.....
.....

4. Full details of directors / trustees / members / shareholders.

Full Name	Identity Number	Personal Tax Reference Number	State Employee Number / Persal Number

5. DECLARATION OF TENDERER / BIDDER'S PAST SUPPLY CHAIN MANAGEMENT PRACTICES

5.1	Is the tenderer / bidder or any of its directors listed on the National Treasury's database as companies or persons prohibited from doing business with the public sector? (Companies or persons who are listed on this database were informed in writing of this restriction by the National Treasury after the audi alteram partem rule was applied).	<input type="checkbox"/> Yes	<input type="checkbox"/> No
5.2	If so, furnish particulars:		
5.3	Is the tenderer / bidder or any of its directors listed on the Register for Tender Defaulters in terms of section 29 of the Prevention and Combating of Corrupt Activities Act (No 12 of 2004)? To access this Register enter the National Treasury's website, www.treasury.gov.za, click on the icon "Register for Tender Defaulters" or submit your written request for a hard copy of the Register to facsimile number (012) 3265445.	<input type="checkbox"/> Yes	<input type="checkbox"/> No
5.4	If so, furnish particulars:		
5.5	Was the tenderer / bidder or any of its directors convicted by a court of law (including a court outside of the Republic of South Africa) for fraud or corruption during the past five years?	<input type="checkbox"/> Yes	<input type="checkbox"/> No
5.6	If so, furnish particulars:		
5.7	Was any contract between the tenderer / bidder and any organ of state terminated during the past five years on account of failure to perform on or comply with the contract?	<input type="checkbox"/> Yes	<input type="checkbox"/> No
5.8	If so, furnish particulars:		

6. CERTIFICATION

I the undersigned (full name) _____ certify that the information furnished on this declaration form is true and correct.

I accept that, in addition to cancellation of a contract, action may be taken against me should this declaration prove to be false.

Name of Tenderer / bidder	Signature	Date	Position

This form has been aligned with SBD4 and SBD 8

PA- 29: CERTIFICATION OF INDEPENDENT BID DETERMINATION

Project title:	Bergville magistrate: repairs and renovations including upgrade and installation of borehole		
Bid no:	DBN21/10/02	Reference no:	6203/0188/26/4

INTRODUCTION

1. This PA-29 [Certificate of Independent Bid Determination] must form part of all bids¹ invited.
2. Section 4 (1) (b) (iii) of the Competition Act No. 89 of 1998, as amended, prohibits an agreement between, or concerted practice by, firms, or a decision by an association of firms, if it is between parties in a horizontal relationship and if it involves collusive bidding (or bid rigging).² Collusive bidding is a *pe se* prohibition meaning that it cannot be justified under any grounds.
3. Treasury Regulation 16A9 prescribes that accounting officers and accounting authorities must take all reasonable steps to prevent abuse of the supply chain management system and authorizes accounting officers and accounting authorities to:
 - a. disregard the bid of any bidder if that bidder, or any of its directors have abused the institution's supply chain management system and or committed fraud or any other improper conduct in relation to such system.
 - b. cancel a contract awarded to a supplier of goods and services if the supplier committed any corrupt or fraudulent act during the bidding process or the execution of that contract.
4. This form (PA-29) serves as a certificate of declaration that would be used by institutions to ensure that, when bids are considered, reasonable steps are taken to prevent any form of bid-rigging.
5. In order to give effect to the above, the attached Certificate of Bid Determination (PA-29) must be completed and submitted with the bid:

¹ Includes price quotations, advertised competitive bids, limited bids and proposals.

Certification of Independent Bid Determination: PA-29

² Bid rigging (or collusive bidding) occurs when businesses, that would otherwise be expected to compete, secretly conspire to raise prices or lower the quality of goods and / or services for purchasers who wish to acquire goods and / or services through a bidding process. Bid rigging is, therefore, an agreement between competitors not to compete.

CERTIFICATE OF INDEPENDENT BID DETERMINATION

I, the undersigned, in submitting the accompanying bid:

(Bid Number and Description)

in response to the invitation for the bid made by:

(Name of Institution)

do hereby make the following statements that I certify to be true and complete in every respect:

I certify, on behalf of: _____ that:

(Name of Bidder)

1. I have read and I understand the contents of this Certificate.
2. I understand that the accompanying bid will be disqualified if this Certificate is found not to be true and complete in every respect.
3. I am authorized by the bidder to sign this Certificate, and to submit the accompanying bid, on behalf of the bidder.
4. Each person whose signature appears on the accompanying bid has been authorized by the bidder to determine the terms of, and to sign the bid, on behalf of the bidder.
5. For the purposes of this Certificate and the accompanying bid, I understand that the word "competitor" shall include any individual or organization, other than the bidder, whether or not affiliated with the bidder, who:

Certification of Independent Bid Determination: PA-29

- (a) has been requested to submit a bid in response to this bid invitation;
 - (b) could potentially submit a bid in response to this bid invitation, based on their qualifications, abilities or experience; and
 - (c) provides the same goods and services as the bidder and/or is in the same line of business as the bidder.
6. The bidder has arrived at the accompanying bid independently from, and without consultation, communication, agreement or arrangement with any competitor. However communication between partners in a joint venture or consortium³ will not be construed as collusive bidding.
7. In particular, without limiting the generality of paragraphs 6 above, there has been no consultation, communication, agreement or arrangement with any competitor regarding:
- (a) prices;
 - (b) geographical area where product or service will be rendered (market allocation)
 - (c) methods, factors or formulas used to calculate prices;
 - (d) the intention or decision to submit or not to submit, a bid;
 - (e) the submission of a bid which does not meet the specifications and conditions of the bid; or
 - (f) bidding with the intention not to win the bid.
8. In addition, there have been no consultations, communications, agreements or arrangements with any competitor regarding the quality, quantity, specifications and conditions or delivery particulars of the products or services to which this bid invitation relates.
9. The terms of the accompanying bid have not been, and will not be, disclosed by the bidder, directly or indirectly, to any competitor, prior to the date and time of the official bid opening or of the awarding of the contract.

I am aware that, in addition and without prejudice to any other remedy provided to combat any restrictive practices related to bids and contracts, bids that are suspicious will be reported to the Competition Commission for investigation and possible imposition of administrative penalties in terms of section 59 of the Competition Act No

Certification of Independent Bid Determination: PA-29

89 of 1998 and or may be reported to the National Prosecuting Authority (NPA) for criminal investigation and or may be restricted from conducting business with the public

³ Joint venture or Consortium means an association of persons for the purpose of combining their expertise, property, capital, efforts, skill and knowledge in an activity for the execution of a contract.

sector for a period not exceeding ten (10) years in terms of the Prevention and Combating of Corrupt Activities Act No 12 of 2004 or any other applicable legislation.

Name of Bidder	Signature	Date	Position

PA-15.1: RESOLUTION OF BOARD OF DIRECTORS

RESOLUTION of a meeting of the Board of *Directors / Members / Partners of:

_____ (legally correct full name and registration number, if applicable, of the Enterprise)

Held at _____ (place)

on _____ (date)

RESOLVED that:

1. The Enterprise submits a Bid / Tender to the Department of Public Works in respect of the following project:

_____ (project description as per Bid / Tender Document)

Bid / Tender Number: _____ (Bid / Tender Number as per Bid / Tender Document)

2. *Mr/Mrs/Ms: _____

in *his/her Capacity as: _____ (Position in the Enterprise)

and who will sign as follows: _____

be, and is hereby, authorised to sign the Bid / Tender, and any and all other documents and/or correspondence in connection with and relating to the Bid / Tender, as well as to sign any Contract, and any and all documentation, resulting from the award of the Bid / Tender to the Enterprise mentioned above.

	Name	Capacity	Signature
1			
2			
3			
4			
5			
6			
7			
8			
9			
10			
11			
12			
13			
14			

15			
16			
17			
18			
19			
20			

The bidding enterprise hereby absolves the Department of Public Works from any liability whatsoever that may arise as a result of this document being signed.

Note:

1. * Delete which is not applicable.
2. **NB:** This resolution must, where possible, be signed by all the Directors / Members / Partners of the Bidding Enterprise.
3. In the event that paragraph 2 cannot be complied with, the resolution must be signed by Directors / Members / Partners holding a majority of the shares / ownership of the Bidding Enterprise (attach proof of shareholding / ownership hereto).
4. Directors / Members / Partners of the Bidding Enterprise may alternatively appoint a person to sign this document on behalf of the Bidding Enterprise, which person must be so authorized by way of a duly completed power of attorney, signed by the Directors / Members / Partners holding a majority of the shares / ownership of the Bidding Enterprise (proof of shareholding / ownership and power of attorney are to be attached hereto).
5. Should the number of Directors / Members / Partners exceed the space available above, additional names and signatures must be supplied on a separate page.

ENTERPRISE STAMP



PA-15.2: RESOLUTION OF BOARD OF DIRECTORS TO ENTER INTO CONSORTIA OR JOINT VENTURES

RESOLUTION of a meeting of the Board of *Directors / Members / Partners of:

(Legally correct full name and registration number, if applicable, of the Enterprise)

Held at _____ (place)

on _____ (date)

RESOLVED that:

1. The Enterprise submits a Bid /Tender, in consortium/Joint Venture with the following Enterprises:

(List all the legally correct full names and registration numbers, if applicable, of the Enterprises forming the Consortium/Joint Venture)

to the Department of Public Works in respect of the following project:

(Project description as per Bid /Tender Document)

Bid / Tender Number: _____ *(Bid / Tender Number as per Bid / Tender Document)*

2. *Mr/Mrs/Ms: _____

in *his/her Capacity as: _____ *(Position in the Enterprise)*

and who will sign as follows: _____

be, and is hereby, authorised to sign a consortium/joint venture agreement with the parties listed under item 1 above, and any and all other documents and/or correspondence in connection with and relating to the consortium/joint venture, in respect of the project described under item 1 above.

3. The Enterprise accepts joint and several liability with the parties listed under item 1 above for the due fulfilment of the obligations of the joint venture deriving from, and in any way connected with, the Contract to be entered into with the Department in respect of the project described under item 1 above.
4. The Enterprise chooses as its *domicilium citandi et executandi* for all purposes arising from this joint venture agreement and the Contract with the Department in respect of the project under item 1 above:

Physical address: _____

_____ (code)



Postal Address: _____

_____ (code)

Telephone number: _____

Fax number: _____

	Name	Capacity	Signature
1			
2			
3			
4			
5			
6			
7			
8			
9			
10			
11			
12			
13			
14			
15			

The bidding enterprise hereby absolves the Department of Public Works from any liability whatsoever that may arise as a result of this document being signed

Note:

1. * Delete which is not applicable.
2. **NB:** This resolution must, where possible, be signed by all the Directors / Members / Partners of the Bidding Enterprise.
3. In the event that paragraph 2 cannot be complied with, the resolution must be signed by Directors / Members / Partners holding a majority of the shares / ownership of the Bidding Enterprise (attach proof of shareholding / ownership hereto).
4. Directors / Members / Partners of the Bidding Enterprise may alternatively appoint a person to sign this document on behalf of the Bidding Enterprise, which person must be so authorized by way of a duly completed power of attorney, signed by the Directors / Members / Partners holding a majority of the shares / ownership of the Bidding Enterprise (proof of shareholding / ownership and power of attorney are to be attached hereto).
5. Should the number of Directors / Members / Partners exceed the space available above, additional names and signatures must be supplied on a separate page.

ENTERPRISE STAMP



PA-15.3: SPECIAL RESOLUTION OF CONSORTIA OR JOINT VENTURES

RESOLUTION of a meeting of the duly authorised representatives of the following legal entities who have entered into a consortium/joint venture to jointly bid for the project mentioned below: *(legally correct full names and registration numbers, if applicable, of the Enterprises forming a Consortium/Joint Venture)*

1. _____

2. _____

3. _____

4. _____

5. _____

6. _____

7. _____

8. _____

Held at _____ *(place)*

on _____ *(date)*

RESOLVED that:

RESOLVED that:

- A. The above-mentioned Enterprises submit a Bid in Consortium/Joint Venture to the Department of Public Works in respect of the following project:

(Project description as per Bid /Tender Document)

Bid / Tender Number: _____ *(Bid / Tender Number as per Bid /Tender Document)*

B. *Mr/Mrs/Ms: _____

in *his/her Capacity as: _____ (Position in the Enterprise)

and who will sign as follows: _____

be, and is hereby, authorised to sign the Bid, and any and all other documents and/or correspondence in connection with and relating to the Bid, as well as to sign any Contract, and any and all documentation, resulting from the award of the Bid to the Enterprises in Consortium/Joint Venture mentioned above.

C. The Enterprises constituting the Consortium/Joint Venture, notwithstanding its composition, shall conduct all business under the name and style of:

D. The Enterprises to the Consortium/Joint Venture accept joint and several liability for the due fulfilment of the obligations of the Consortium/Joint Venture deriving from, and in any way connected with, the Contract entered into with the Department in respect of the project described under item A above.

E. Any of the Enterprises to the Consortium/Joint Venture intending to terminate the consortium/joint venture agreement, for whatever reason, shall give the Department 30 days written notice of such intention. Notwithstanding such decision to terminate, the Enterprises shall remain jointly and severally liable to the Department for the due fulfilment of the obligations of the Consortium/Joint Venture as mentioned under item D above.

F. No Enterprise to the Consortium/Joint Venture shall, without the prior written consent of the other Enterprises to the Consortium/Joint Venture and of the Department, cede any of its rights or assign any of its obligations under the consortium/joint venture agreement in relation to the Contract with the Department referred to herein.

G. The Enterprises choose as the *domicilium citandi et executandi* of the Consortium/Joint Venture for all purposes arising from the consortium/joint venture agreement and the Contract with the Department in respect of the project under item A above:

Physical address: _____

_____ (code)

Postal Address: _____

_____ (code)

Telephone number: _____

Fax number: _____



	Name	Capacity	Signature
1			
2			
3			
4			
5			
6			
7			
8			
9			
10			
11			
12			
13			
14			
15			

The bidding enterprise hereby absolves the Department of Public Works from any liability whatsoever that may arise as a result of this document being signed.

Note:

1. * Delete which is not applicable.
2. **NB:** This resolution must be signed by all the Duly Authorised Representatives of the Legal Entities to the consortium/joint venture submitting this tender, as named in item 2 of Resolution PA-15.2.
3. Should the number of the Duly Authorised Representatives of the Legal Entities joining forces in this tender exceed the space available above, additional names, capacity and signatures must be supplied on a separate page.
4. Resolution PA-15.2, duly completed and signed, from the separate Enterprises who participate in this consortium/joint venture, must be attached to this Special Resolution (PA-15.3).

DPW-16 (EC): SITE INSPECTION MEETING CERTIFICATE

Project title:	<i>Bergville magistrate: repairs and renovations including upgrade and installation of borehole</i>		
Tender no:	<i>DBN21/10/02</i>	Reference no:	<i>6203/0188/26/4</i>
Closing date:			

This is to certify that I, _____ representing
_____ in the company of
_____ visited the site on:

I have made myself familiar with all local conditions likely to influence the work and the cost thereof. I further certify that I am satisfied with the description of the work and explanations given at the site inspection meeting and that I understand perfectly the work to be done, as specified and implied, in the execution of this contract.

Name of Tenderer	Signature	Date

Name of DPW Representative	Signature	Date

PREFERENCE POINTS CLAIM FORM IN TERMS OF THE PREFERENTIAL PROCUREMENT REGULATIONS 2017

This preference form must form part of all bids invited. It contains general information and serves as a claim form for preference points for Broad-Based Black Economic Empowerment (B-BBEE) Status Level of Contribution

NB: BEFORE COMPLETING THIS FORM, BIDDERS MUST STUDY THE GENERAL CONDITIONS, DEFINITIONS AND DIRECTIVES APPLICABLE IN RESPECT OF B-BBEE, AS PRESCRIBED IN THE PREFERENTIAL PROCUREMENT REGULATIONS, 2017 AND THE AMENDED B-BBEE CODES.

1. GENERAL CONDITIONS

1.1. The following preference point systems are applicable to all bids:

- the 80/20 system for requirements with a Rand value of up to R50 000 000 (all applicable taxes included); and
- the 90/10 system for requirements with a Rand value above R50 000 000 (all applicable taxes included).

1.2. The value of this bid is estimated to **Not Exceed** R50 000 000 (all applicable taxes included) and therefore the... **80/20**.....system shall be applicable.

1.3. Preference points for this bid shall be awarded for:

- (a) Price; and
- (b) B-BBEE Status Level of Contribution.

1.3.1 The maximum points for this bid are allocated as follows:

	POINTS
1.3.1.1 PRICE	80
1.3.1.2 B-BBEE STATUS LEVEL OF CONTRIBUTION	20
Total points for Price and B-BBEE must not exceed	100
1.4. Failure on the part of a bidder to fill in and/or to sign this form and submit a B-BBEE Verification Certificate from a Verification Agency accredited by the South African Accreditation System (SANAS) or an Accounting Officer as contemplated in the Close Corporation Act (CCA) together with the bid, will be interpreted to mean that preference points for B-BBEE status level of contribution are not claimed.	
1.5. An Exempted Micro Enterprise (EME) is only required to obtain a sworn affidavit or a certificate issued by Companies and intellectual property Commission (CIPC) confirming their annual turnover of R10 Million or less and level of black ownership to claim points.	
1.6. Qualifying Small Enterprise (QSE) is only required to obtain a sworn affidavit or a certificate issued by Companies and intellectual property Commission (CIPC) confirming their annual turnover of R10 Million	

Preference Points Claim for Bids: PA-16

or less and level of black ownership to claim points.

- 1.7 The purchaser reserves the right to require of a bidder, either before a bid is adjudicated or at any time subsequently, to substantiate any claim in regard to preferences, in any manner required by the purchaser.
- 1.8 CERTIFICATES ISSUED BY IRBA AND ACCOUNTING OFFICER HAVE BEEN DISCONTINUED; HOWEVER VALID CERTIFICATES ALREADY ISSUED BEFORE 01 JANUARY 2017 MAY BE USED UNTIL THEY PHASE OUT COMPLETELY BY DECEMBER 2017

2. DEFINITIONS

- (a) **“all applicable taxes”** includes value-added tax, pay as you earn, income tax, unemployment insurance fund contributions and skills development levies;
- (b) **“B-BBEE”** means broad-based black economic empowerment as defined in section 1 of the Broad-Based Black Economic Empowerment Act;
- (c) **“B-BBEE status level of contributor”** means the B-BBEE status received by a measured entity based on its overall performance using the relevant scorecard contained in the Codes of Good Practice on Black Economic Empowerment, issued in terms of section 9(1) of the Broad-Based Black Economic Empowerment Act;
- (d) **“bid”** means a written offer in a prescribed or stipulated form in response to an invitation by an organ of state for the provision of services, works or goods, through price quotations, advertised competitive bidding processes or proposals;
- (e) **“Broad-Based Black Economic Empowerment Act”** means the Broad-Based Black Economic Empowerment Act, 2003 (Act No. 53 of 2003);
- (f) **“comparative price”** means the price after the factors of a non-firm price and all unconditional discounts that can be utilized have been taken into consideration;
- (g) **“consortium or joint venture”** means an association of persons for the purpose of combining their expertise, property, capital, efforts, skill and knowledge in an activity for the execution of a contract;
- (h) **“contract”** means the agreement that results from the acceptance of a bid by an organ of state;
- (i) **“EME”** means an Exempted Micro Enterprise as defines by Codes of Good Practice under section 9 (1) of the Broad-Based Black Economic Empowerment Act, 2003 (Act No. 53 of 2003);
- (j) **“Firm price”** means the price that is only subject to adjustments in accordance with the actual increase or decrease resulting from the change, imposition, or abolition of customs or excise duty and any other duty, levy, or tax, which, in terms of the law or regulation, is binding on the contractor and demonstrably has an influence on the price of any supplies, or the rendering costs of any service, for the execution of the contract;
- (k) **“functionality”** means the measurement according to predetermined norms, as set out in the bid documents, of a service or commodity that is designed to be practical and useful, working or operating, taking into account, among other factors, the quality, reliability, viability and durability of a service and the technical capacity and ability of a bidder;
- (l) **“non-firm prices”** means all prices other than “firm” prices;
- (m) **“person”** includes a juristic person;

Preference Points Claim for Bids: PA-16

- (n) **“QSE”** means a Qualifying Small Enterprise as defines by Codes of Good Practice under section 9 (1) of the Broad-Based Black Economic Empowerment Act, 2003 (Act No. 53 of 2003);
- (o) **“rand value”** means the total estimated value of a contract in South African currency, calculated at the time of bid invitations, and includes all applicable taxes and excise duties;
- (p) **“sub-contract”** means the primary contractor’s assigning, leasing, making out work to, or employing, another person to support such primary contractor in the execution of part of a project in terms of the contract;
- (q) **“total revenue”** bears the same meaning assigned to this expression in the Codes of Good Practice on Black Economic Empowerment, issued in terms of section 9(1) of the Broad-Based Black Economic Empowerment Act and promulgated in the *Government Gazette* on 9 February 2007;
- (r) **“trust”** means the arrangement through which the property of one person is made over or bequeathed to a trustee to administer such property for the benefit of another person; and
- (s) **“trustee”** means any person, including the founder of a trust, to whom property is bequeathed in order for such property to be administered for the benefit of another person.

3. ADJUDICATION USING A POINT SYSTEM

- 3.1 The bidder obtaining the highest number of total points will be awarded the contract.
- 3.2 Preference points shall be calculated after prices have been brought to a comparative basis taking into account all factors of non-firm prices and all unconditional discounts;.
- 3.3 Points scored must be rounded off to the nearest 2 decimal places.
- 3.4 In the event that two or more bids have scored equal total points, the successful bid must be the one scoring the highest number of preference points for B-BBEE.
- 3.5 However, when functionality is part of the evaluation process and two or more bids have scored equal points including equal preference points for B-BBEE, the successful bid must be the one scoring the highest score for functionality.
- 3.6 Should two or more bids be equal in all respects, the award shall be decided by the drawing of lots.

4. POINTS AWARDED FOR PRICE

4.1 THE 80/20 OR 90/10 PREFERENCE POINT SYSTEMS

A maximum of 80 or 90 points is allocated for price on the following basis:

80/20 or 90/10

$$P_s = 80 \left(1 - \frac{P_t - P_{\min}}{P_{\min}} \right) \quad \text{or} \quad P_s = 90 \left(1 - \frac{P_t - P_{\min}}{P_{\min}} \right)$$

Where

P_s = Points scored for comparative price of bid under consideration

Preference Points Claim for Bids: PA-16

Pt = Comparative price of bid under consideration

Pmin = Comparative price of lowest acceptable bid

5. Points awarded for B-BBEE Status Level of Contribution

- 5.1 In terms of Regulation 6(2) and /or 7(2), of the Preferential Procurement Regulations, preference points must be awarded to a bidder for attaining the B-BBEE status level of contribution in accordance with the table below:

B-BBEE Status Level of Contributor	Number of points (90/10 system)	Number of points (80/20 system)
1	10	20
2	9	18
3	6	14
4	5	12
5	4	8
6	3	6
7	2	4
8	1	2
Non-compliant contributor	0	0

- 5.2 A trust, consortium or joint venture, will qualify for points for their B-BBEE status level as a legal entity, provided that the entity submits their B-BBEE status level certificate.
- 5.3 A trust, consortium or joint venture will qualify for points for their B-BBEE status level as an unincorporated entity, provided that the entity submits their consolidated B-BBEE scorecard as if they were a group structure and that such a consolidated B-BBEE scorecard is prepared for every separate bid.
- 5.4 Tertiary institutions and public entities will be required to submit their B-BBEE status level certificates in terms of the specialized scorecard contained in the B-BBEE Codes of Good Practice.
- 5.5 A person awarded a contract may not sub-contract more than 25% of the value of the contract to any other enterprise that does not have an equal or higher B-BBEE status level than the person concerned, unless the contract is sub-contracted to an EME that has the capability and ability to execute the sub-contract.

6. BID DECLARATION

- 6.1 Bidders who claim points in respect of B-BBEE Status Level of Contribution must complete the following:

7. B-BBEE STATUS LEVEL OF CONTRIBUTION CLAIMED IN TERMS OF PARAGRAPHS 1.3.1.2 AND 5.1

Any reference to words "Bid" or Bidder" herein and/or in any other documentation shall be construed to have the same meaning as the words "Tender" or "Tenderer".

Preference Points Claim for Bids: PA-16

7.1 B-BBEE Status Level of Contribution: =(maximum of 10 or 20 points)

(Points claimed in respect of paragraph 7.1 must be in accordance with the table reflected in paragraph 5.1 and must be substantiated by means of a B-BBEE certificate issued by a Verification Agency accredited by SANAS or Sworn Affidavit for EME's and QSE's.

8 SUB-CONTRACTING (relates to 5.5)

8.1 Will any portion of the contract be sub-contracted? YES / NO (delete which is not applicable)

8.1.1 If yes, indicate:

(i) what percentage of the contract will be subcontracted?

.....%

(ii) the name of the sub-contractor?

(iii) the B-BBEE status level of the sub-contractor?

.....

(iv) whether the sub-contractor is an EME/ a QSE? YES / NO (delete which is not applicable)

Designated Group: An EME or QSE which is at last 51% owned by:	EME √	QSE √
Black people		
Black people who are youth		
Black people who are women		
Black people with disabilities		
Black people living in rural or underdeveloped areas or townships		
Cooperative owned by black people		
Black people who are military veterans		
OR		
Any EME		
Any QSE		

9 DECLARATION WITH REGARD TO COMPANY/FIRM

9.1 Name of company/firm :

9.2 VAT registration number :

9.3 Company registration number :

9.4 TYPE OF COMPANY/ FIRM

- ☐ Partnership/Joint Venture / Consortium
- ☐ One person business/sole propriety
- ☐ Close corporation
- ☐ Company
- ☐ (Pty) Limited

Any reference to words "Bid" or Bidder" herein and/or in any other documentation shall be construed to have the same meaning as the words "Tender" or "Tenderer".

Preference Points Claim for Bids: PA-16

[TICK APPLICABLE BOX]

5 DESCRIBE PRINCIPAL BUSINESS ACTIVITIES

.....
.....
.....

9.6 COMPANY CLASSIFICATION

- ☐ Manufacturer
☐ Supplier
☐ Professional service provider
☐ Other service providers, e.g. transporter, etc.

[TICK APPLICABLE BOX]

9.7 Total number of years the company/firm has been in business?

9.8 I/we, the undersigned, who is / are duly authorised to do so on behalf of the company/firm, certify that the points claimed, based on the B-BBE status level of contribution indicated in paragraph 7 of the foregoing certificate/ Sworn Affidavit, qualifies the company/ firm for the preference(s) shown and I / we acknowledge that:

- (i) The information furnished is true and correct;
- (ii) The preference points claimed are in accordance with the General Conditions as indicated in paragraph 1 of this form.
- (iii) In the event of a contract being awarded as a result of points claimed as shown in paragraph 7, the contractor may be required to furnish documentary proof to the satisfaction of the purchaser that the claims are correct;
- (iv) If the B-BBEE status level of contribution has been claimed or obtained on a fraudulent basis or any of the conditions of contract have not been fulfilled, the purchaser may, in addition to any other remedy it may have –
 - (a) Disqualify the person from the bidding process;
 - (b) Recover costs, losses or damages it has incurred or suffered as a result of that person's conduct;
 - (c) Cancel the contract and claim any damages which it has suffered as a result of having to make less favourable arrangements due to such cancellation;
 - (d) restrict the bidder or contractor, its shareholders and directors, or only the shareholders and directors who acted on a fraudulent basis, from obtaining business from any organ of state for a period not exceeding 10 years, after the audi alteram partem (hear the other side) rule has been applied; and
 - (e) forward the matter for criminal prosecution

WITNESSES:

1.

2.

SIGNATURE(S) OF BIDDER(S)

Preference Points Claim for Bids: PA-16

DATE:.....

ADDRESS:.....

.....

DPW-09 (EC): PARTICULARS OF TENDERER'S PROJECTS

Project title:	<i>Bergville magistrate: repairs and renovations including upgrade and installation of borehole</i>		
Tender / quotation no:	DBN21/10/02	Closing date:	05 November 2021
Advertising date:	08 October 2021	Validity period:	56 days

1. PARTICULARS OF THE TENDERER'S CURRENT AND PREVIOUS COMMITMENTS

1.1. Current projects

Projects currently engaged in	Name of Employer or Representative of Employer	Contact tel. no.	Contract sum	Contractual commencement date	Contractual completion date	Current percentage progress
1						
2						
3						
4						
5						
6						
7						
8						

1.2. Completed projects

Projects completed in the previous 5 (five) years	Name of Employer or Representative of Employer	Contact tel. no.	Contract sum	Contractual commencement date	Contractual completion date	Date of Certificate of Practical Completion
1						
2						
3						
4						
5						
6						
7						
8						
9						

Name of Tenderer	Signature	Date

Guidance Document for the Calculation of Local Content

1. DEFINITIONS

Unless explicitly provided in this guideline, the definitions given in SATS 1286:2011 apply.

2. GENERAL

2.1. Introduction

This guideline provides tenderers with a detailed description of how to calculate local content of products (goods, services and works) by components/material/services and enables them to keep an updated record for verification requirements as per the SATS 1286:2011 Annexure A and B.

The guideline consists of two parts, namely:

- a written guideline; and
- three declarations that must be completed:
 - Declaration C: “Local Content Declaration – Summary Schedule” (see Annexure C);
 - Declaration D: “Imported Content Declaration – Supporting Schedule to Annex C” (see Annexure D); and
 - Declaration E: “Local Content Declaration – Supporting Schedule to Annex C” (see Annexure E).

The guidelines and declarations should be used by tenderers when preparing a tender. A tenderer must complete Declarations D and E, and consolidate the information on Declaration C.

Annexure C must be submitted with the tender by the closing date and time as determined by the Tender Authority. The Tender Authority reserves the right to request that Declarations D and E also be submitted.

If the tender is successful, the tenderer must continuously update Declarations C, D and E with actual values for the duration of the contract.

NOTE:

Annexure A is a note to the purchaser in SATS 1286:2011; and
Annexure B is the Local Content Declaration IN SATS 1286:2011.

2.2. What is local content?

According to SATS 1286:2011, the local content of a product is the tender price less the value of imported content, expressed as a percentage. It is, therefore, necessary to first compute the imported value of a product to determine the local content of a product.

2.3. Categories: Imported and Local Content

The tenderer must differentiate between imported content and local content.

Imported content of a product by components/material/services is separated into two categories, namely:

- products imported directly by the tenderer; and
- products imported by a third party and supplied to the tenderer.

2.3.1. Imported Content

Identify the imported content, if any, by value for products by component/material/services. In the case of components/materials/services sourced from a South African manufacturer, agent, supplier or subcontractor (i.e. third party), obtain that information and Declaration D from the third party.

Calculate the imported content of components/materials/services to be used in the manufacture of the total quantity of the products for which the tender is to be submitted.

As stated in clause 3.2.4 of SATS 1286:2011: "If information on the origin of components, parts or materials is not available, it will be deemed to be imported content."

2.3.1.1. Imported directly by the tenderer:

When the tenderer import products directly, the onus is on the tenderer to provide evidence of any components/materials/services that were procured from a non-domestic source. The evidence should be verifiable and pertain to the tender as a whole. Typical evidence will include commercial invoices, bills of entry, etc.

When the tenderer procures imported services such as project management, design, testing, marketing, etc and makes royalty and lease payments, such payments relating to the tender must be included when calculating imported content.

2.3.1.2. Imported by a third party and supplied to the tenderer:

When the tenderer supplies components/material/services that are imported by any third party (for example, a domestic manufacturer, agent, supplier or subcontractor in the supply chain), the onus is on the tenderer to obtain verifiable evidence from the third party.

The tenderer must obtain Declaration D from all third parties for the related tender. The third party must be requested by the tenderer to continuously update Declaration D. Typical evidence of imported content will include commercial invoices, bills of entry etc.

When a third party procures imported services such as project management, design, testing, marketing etc. and makes royalty and lease payments, such payments relating to the tender must be included when calculating imported content.

2.3.1.3. Exempt Imported Content:

Exemptions, if any, are granted by the Department of Trade and Industry (**the dti**). Evidence of the exemptions must be provided and included in Annexure D.

2.3.2. Local Content

Identify and calculate the local content, by value for products by components/materials/services to be used in the manufacture of the total quantity of the products.

3. ANNEXURE C

3.1. Guidelines for completing Annexure C: Local Content Declaration – Summary Schedule

Note: The paragraph numbers correspond to the numbers in Annexure C.

C1. Tender Number

Supply the tender number that is specified on the specific tender documentation.

C2. Tender description

Supply the tender description that is specified on the specific tender documentation.

C3. Designated products

Supply the details of the products that are designated in terms of this tender (i.e. buses).

C4. Tender Authority

Supply the name of the tender authority.

C5. Tendering Entity name

Provide the tendering entity name (for example, Unibody Bus Builders (Pty) Ltd).

C6. Tender Exchange Rate

Provide the exchange rate used for this tender, as per the Standard Bidding Document (SBD) and Municipal Bidding Document (MBD) 6.2.

C7. Specified local content %

Provide the specified minimum local content requirement for the tender (i.e. 80%), as per the Standard Bidding Document (SBD) and Municipal Bidding Document (MDB) 6.2.

C8. Tender item number

Provide the tender item number(s) of the products that have a local content requirement as per the tender specification.

C9. List of items

Provide a list of the item(s) corresponding with the tender item number.
This may be a short description or a brand name.

Calculation of local content

C10. Tender price

Provide the unit tender price of each item excluding VAT.

C11. Exempted imported content

Provide the ZAR value of the exempted imported content for each item, if applicable. These value(s) must correspond with the value(s) of column D16 on Annexure D.

C12. Tender value net of exempted imported content

Provide the net tender value of the item, if applicable, by deducting the exempted imported content (C11) from the tender price (C10).

C13. Imported value

Provide the ZAR value of the items' imported content.

C14. Local value

Provide the local value of the item by deducting the Imported value (C13) from the net tender value (C12).

C15. Local content percentage (per item)

Provide the local content percentage of the item(s) by dividing the local value (C14) by the net tender value (C12) as per the local content formula in SATS 1286.

Tender Summary

C16. Tender quantity

Provide the tender quantity for each item number as per the tender specification.

C17. Total tender value

Provide the total tender value by multiplying the tender quantity (C16) by the tender price (C10).

C18. Total exempted imported content

Provide the total exempted imported content by multiplying the tender quantity (C16) by the exempted imported content (C11). These values must correspond with the values of column D18 on Annexure D.

C19. Total imported content

Provide the total imported content of each item by multiplying the tender quantity (C16) by the imported value (C13).

C20. Total tender value

Total tender value is the sum of the values in column C17.

C21. Total exempted imported content

Total exempted imported content is the sum of the values in column C18. This value must correspond with the value of D19 on Annexure D.

C22. Total tender value net of exempted imported content

The total tender value net of exempt imported content is the total tender value (C20) less the total exempted imported content (C21).

C23. Total imported content

Total imported content is the sum of the values in column C19. This value must correspond with the value of D53 on Annexure D.

C24. Total local content

Total local content is the total tender value net of exempted imported content (C22) less the total imported content (C23). This value must correspond with the value of E13 on Annexure E.

C25. Average local content percentage of tender

The average local content percentage of tender is calculated by dividing total local content (C24) by the total tender value net of exempted imported content (C22).

4. ANNEXURE D

4.1. Guidelines for completing Annexure D: “Imported Content Declaration – Supporting Schedule to Annexure C”

Note: The paragraph numbers correspond to the numbers in Annexure D.

D1. Tender number

Supply the tender number that is specified on the specific tender documentation.

D2. Tender description

Supply the tender description that is specified on the specific tender documentation.

D3. Designated products

Supply the details of the products that are designated in terms of this tender (i.e. buses).

D4. Tender authority

Supply the name of the tender authority.

D5. Tendering entity name

Provide the tendering entity name (i.e. Unibody Bus Builders (Pty) Ltd).

D6. Tender exchange rate

Provide the exchange rate used for this tender, as per the Standard Bidding Document (SBD) and Municipal Bidding Document (MBD) 6.2.

Table A. Exempted Imported Content

D7. Tender item number

Provide the tender item number(s) of the product(s) that have imported content.

D8. Description of imported content

Provide a list of the exempted imported product(s), if any, as specified in the tender.

D9. Local supplier

Provide the name of the local supplier(s) supplying the imported product(s).

D10. Overseas supplier

Provide the name(s) of the overseas supplier(s) supplying the exempted imported product(s).

D11. Imported value as per commercial invoice

Provide the foreign currency value of the exempted imported product(s) disclosed in the commercial invoice accepted by the South African Revenue Service (SARS).

D12. Tender exchange rate

Provide the exchange rate used for this tender as per the Standard Bidding Document (SBD) and Municipal Bidding Document (MBD) 6.2.

D13. Local value of imports

Convert the value of the exempted imported content as per commercial invoice (D11) into the ZAR value by using the tender exchange rate (D12) disclosed in the tender documentation.

D14. Freight costs to port of entry

Provide the freight costs to the South African Port of the exempted imported item.

D15. All locally incurred landing costs and duties

Provide all landing costs including customs and excise duty for the exempted imported product(s) as stipulated in the SATS 1286:2011.

D16. Total landed costs excl VAT

Provide the total landed costs (excluding VAT) for each item imported by adding the corresponding item values in columns D13, D14 and D15. These values must be transferred to column C11 on Annexure C.

D17. Tender quantity

Provide the tender quantity of the exempted imported products as per the tender specification.

D18. Exempted imported value

Provide the imported value for each of the exempted imported product(s) by multiplying the total landed cost (excl. VAT) (D16) by the

tender quantity (D17). The values in column D18 must correspond with the values of column C18 of Annexure C.

D19. Total exempted imported value

The total exempted imported value is the sum of the values in column D18. This total must correspond with the value of C21 on Annexure C.

Table B. Imported Directly By Tenderer

D20. Tender item numbers

Provide the tender item number(s) of the product(s) that have imported content.

D21. Description of imported content:

Provide a list of the product(s) imported directly by tender as specified in the tender documentation.

D22. Unit of measure

Provide the unit of measure for the product(s) imported directly by the tenderer.

D23. Overseas supplier

Provide the name(s) of the overseas supplier(s) supplying the imported product(s).

D24. Imported value as per commercial Invoice

Provide the foreign currency value of the product(s) imported directly by tenderer disclosed in the commercial invoice accepted by the South African Revenue Service (SARS).

D25. Tender rate of exchange

Provide the exchange rate used for this tender as per the Standard Bidding Document (SBD) and Municipal Bidding Document (MBD) 6.2.

D26. Local value of imports

Convert the value of the product(s) imported directly by the tenderer as per commercial invoice (D24) into the ZAR value by using the tender exchange rate (D25) disclosed in the tender documentation.

D27. Freight costs to port of entry

Provide the freight costs to the South African Port of the product(s) imported directly by the tenderer.

D28. All locally incurred landing costs and duties

Provide all landing costs including customs and excise duty for the product(s) imported directly by the tenderer as stipulated in the SATS 1286:2011.

D29. Total landed costs excl VAT

Provide the total landed costs (excluding VAT) for each item imported directly by the tenderer by adding the corresponding item values in columns D26, D27 and D28.

D30. Tender quantity

Provide the tender quantity of the product(s) imported directly by the tenderer as per the tender specification.

D31. Total imported value

Provide the total imported value for each of the product(s) imported directly by the tenderer by multiplying the total landed cost (excl. VAT) (D29) by the tender quantity (D30).

D32. Total imported value by tenderer

The total value of imports by the tenderer is the sum of the values in column D31.

Table C. Imported by Third Party and Supplied to the Tenderer

D33. Description of imported content

Provide a list of the product(s) imported by the third party and supplied to the tenderer as specified in the tender documentation.

D34. Unit of measure

Provide the unit of measure for the product(s) imported by the third party and supplied to tenderer as disclosed in the commercial invoice.

D35. Local supplier

Provide the name of the local supplier(s) supplying the imported product(s).

D36. Overseas supplier

Provide the name(s) of the overseas supplier(s) supplying the imported products.

D37. Imported value as per commercial invoice

Provide the foreign currency value of the product(s) imported by the third party and supplied to the tenderer disclosed in the commercial invoice accepted by SARS.

D38. Tender rate of exchange

Provide the exchange rate used for this tender as per the Standard Bidding Document (SBD) and Municipal Bidding Document (MBD) 6.2.

D39. Local value of imports

Convert the value of the product(s) imported by the third party as per commercial invoice (D37) into the ZAR value by using the tender exchange rate (D38) disclosed in the tender documentation.

D40. Freight costs to port of entry

Provide the freight costs to the South African Port of the product(s) imported by third party and supplied to the tenderer.

D41. All locally incurred landing costs and duties

Provide all landing costs including customs and excise duty for the product(s) imported by third party and supplied to the tenderer as stipulated in the SATS 1286:2011.

D42. Total landed costs excluding VAT

Provide the total landed costs (excluding VAT) for each product imported by third party and supplied to the tenderer by adding the corresponding item values in columns D39, D40 and D41.

D43. Quantity imported

Provide the quantity of each product(s) imported by third party and supplied to the tenderer for the tender.

D44. Total imported value

Provide the total imported value of the product(s) imported by third party and supplied to the tenderer by multiplying the total landed cost (D42) by the quantity imported (D43).

D45. Total imported value by third party

The total imported value from the third party is the sum of the values in column D44.

Table D. Other Foreign Currency Payments

D46. Type of payment

Provide the type of foreign currency payment. (i.e. royalty payment for use of patent, annual licence fee, etc).

D47. Local supplier making the payment

Provide the name of the local supplier making the payment.

D48. Overseas beneficiary

Provide the name of the overseas beneficiary.

D49. Foreign currency value paid

Provide the value of the listed payment(s) in their foreign currency.

D50. Tender rate of exchange

Provide the exchange rate used for this tender as per the Standard Bidding Document (SBD) and Municipal Bidding Document (MBD) 6.2.

D51. Local value of payments

Provide the local value of each payment by multiplying the foreign currency value paid (D49) by the tender rate of exchange (D50).

D52. Total of foreign currency payments declared by tenderer and/or third party

The total of foreign currency payments declared by tenderer and/or a third party is the sum of the values in column D51.

D53. Total of imported content and foreign currency payment

The total imported content and foreign currency payment is the sum of the values in column D32, D45 and D52. This value must correspond with the value of C23 on Annexure C.

5. ANNEXURE E

5.1. Guidelines to completing Annexure E: “Local Content Declaration-Supporting Schedule to Annexure C”

The paragraph numbers correspond to the numbers in Annexure E

E1. Tender number

Supply the tender number that is specified on the specific tender documentation.

E2. Tender description

Supply the tender description that is specified on the specific tender documentation.

E3. Designated products

Supply the details of the products that are designated in terms of this tender (for example, buses/canned vegetables).

E4. Tender authority

Supply the name of the tender authority.

E5. Tendering entity name

Provide the tendering entity name (for example, Unibody Bus Builders (Pty) Ltd) Ltd).

Local Goods, Services and Works

E6. Description of items purchased

Provide a description of the items purchased locally in the space provided.

E7. Local supplier

Provide the name of the local supplier that corresponds to the item listed in column E6.

E8. Value

Provide the total value of the item purchased in column E6.

E9. Total local products (Goods, Services and Works)

Total local products (goods, services and works) is the sum of the values in E8.

E10. Manpower costs:

Provide the total of all the labour costs accruing only to the tenderer (i.e. not the suppliers to tenderer).

E11. Factory overheads:

Provide the total of all the factory overheads including rental, depreciation and amortisation for local and imported capital goods, utility costs and consumables. (Consumables are goods used by individuals and businesses that must be replaced regularly because they wear out or are used up. Consumables can also be defined as the components of an end product that are used up or permanently altered in the process of manufacturing, such as basic chemicals.)

E12. Administration overheads and mark-up:

Provide the total of all the administration overheads, including marketing, insurance, financing, interest and mark-up costs.

E13. Total local content:

The total local content is the sum of the values of E9, E10, E11 and E12. This total must correspond with C24 of Annexure C.

PA36: Declaration Certificate for Local Production and Content for Designated Sectors.

(This form has been aligned with NT - SBD 6.2)

PA-36: DECLARATION CERTIFICATE FOR LOCAL PRODUCTION AND CONTENT FOR DESIGNATED SECTORS

This Standard Bidding Document (SBD) must form part of all bids invited. It contains general information and serves as a declaration form for local content (local production and local content are used interchangeably).

Before completing this declaration, bidders must study the General Conditions, Definitions, Directives applicable in respect of Local Content as prescribed in the Preferential Procurement Regulations, 2017, the South African Bureau of Standards (SABS) approved technical specification number SATS 1286:2011 (Edition 1) and the Guidance on the Calculation of Local Content together with the Local Content Declaration Templates [Annex C (Local Content Declaration: Summary Schedule), D (Imported Content Declaration: Supporting Schedule to Annex C) and E (Local Content Declaration: Supporting Schedule to Annex C)].

1. General Conditions

- 1.1. Preferential Procurement Regulations, 2017 (Regulation 8) make provision for the promotion of local production and content.
- 1.2. Regulation 8.(2) prescribes that in the case of designated sectors, organs of state must advertise such tenders with the specific bidding condition that only locally produced or manufactured goods, with a stipulated minimum threshold for local production and content will be considered.
- 1.3. Where necessary, for tenders referred to in paragraph 1.2 above, a two stage bidding process may be followed, where the first stage involves a minimum threshold for local production and content and the second stage price and B-BBEE.
- 1.4. A person awarded a contract in relation to a designated sector, may not sub-contract in such a manner that the local production and content of the overall value of the contract is reduced to below the stipulated minimum threshold.
- 1.5. The local content (LC) expressed as a percentage of the bid price must be calculated in accordance with the SABS approved technical specification number SATS 1286: 2011 as follows:

$$LC = [1 - x / y] * 100$$

Where

- x is the imported content in Rand
y is the bid price in Rand excluding value added tax (VAT)

Prices referred to in the determination of x must be converted to Rand (ZAR) by using the exchange rate published by South African Reserve Bank (SARB) on the date of advertisement of the bid as indicated in paragraph 3.1 below.

The SABS approved technical specification number SATS 1286:2011 is accessible on <http://www.thedti.gov.za/industrial-development/ip.jsp> at no cost.

PA36: Declaration Certificate for Local Production and Content for Designated Sectors.

(This form has been aligned with NT - SBD 6.2)

1.6. A bid may be disqualified if this Declaration Certificate and the Annex C (Local Content Declaration: Summary Schedule) are not submitted as part of the bid documentation;

2. The stipulated minimum threshold(s) for local production and content (refer to Annex A of SATS 1286:2011) for this bid is/are as follows:

<u>Description of services, works or goods</u>	<u>Stipulated minimum threshold</u>
<u>Electrical Product</u>	<u>90 %</u>
<u>Valves</u>	<u>70 %</u>
<u>PVC Pipes</u>	<u>100 %</u>
<u>Steel</u>	<u>100 %</u>

3. Does any portion of the goods or services offered have any imported content?

(Tick applicable box)

YES		NO	
-----	--	----	--

3.1 If yes, the rate(s) of exchange to be used in this bid to calculate the local content as prescribed in paragraph 1.5 of the general conditions must be the rate(s) published by SARB for the specific currency on the date of advertisement of the bid.

The relevant rates of exchange information is accessible on www.resbank.co.za

Indicate the rate(s) of exchange against the appropriate currency in the table below (refer to Annex A of SATS 1286:2011):

Currency	Rates of exchange
US Dollar	
Pound Sterling	
Euro	
Yen	
Other	

NB: Bidders must submit proof of the SARB rate (s) of exchange used.

4. Where, after the award of a bid, challenges are experienced in meeting the stipulated minimum threshold for local content the dti must be informed accordingly in order for the dti to verify and in consultation with the AO/AA provide directives in this regard.

LOCAL CONTENT DECLARATION
(REFER TO ANNEX B OF SATS 1286:2011)

PA36: Declaration Certificate for Local Production and Content for Designated Sectors.

(This form has been aligned with NT - SBD 6.2)

LOCAL CONTENT DECLARATION BY CHIEF FINANCIAL OFFICER OR OTHER LEGALLY RESPONSIBLE PERSON NOMINATED IN WRITING BY THE CHIEF EXECUTIVE OR SENIOR MEMBER/PERSON WITH MANAGEMENT RESPONSIBILITY (CLOSE CORPORATION, PARTNERSHIP OR INDIVIDUAL)

IN RESPECT OF BID NO.

ISSUED BY: (Procurement Authority / Name of Institution):
.....

NB

- 1 The obligation to complete, duly sign and submit this declaration cannot be transferred to an external authorized representative, auditor or any other third party acting on behalf of the bidder.
- 2 Guidance on the Calculation of Local Content together with Local Content Declaration Templates (Annex C, D and E) is accessible on http://www.thedti.gov.za/industrial_development/ip.jsp. Bidders should first complete Declaration D. After completing Declaration D, bidders should complete Declaration E and then consolidate the information on Declaration C. **Declaration C should be submitted with the bid documentation at the closing date and time of the bid in order to substantiate the declaration made in paragraph (c) below.** Declarations D and E should be kept by the bidders for verification purposes for a period of at least 5 years. The successful bidder is required to continuously update Declarations C, D and E with the actual values for the duration of the contract.

I, the undersigned, (full names),
do hereby declare, in my capacity as
of(name of bidder
entity), the following:

- (a) The facts contained herein are within my own personal knowledge.
- (b) I have satisfied myself that:
 - (i) the goods/services/works to be delivered in terms of the above-specified bid comply with the minimum local content requirements as specified in the bid, and as measured in terms of SATS 1286:2011; and
- (c) The local content percentage (%) indicated below has been calculated using the formula given in clause 3 of SATS 1286:2011, the rates of exchange indicated in paragraph 3.1 above and the information contained in Declaration D and E which has been consolidated in Declaration C:

Bid price, excluding VAT (y)	R
Imported content (x), as calculated in terms of SATS 1286:2011	R
Stipulated minimum threshold for local content (paragraph 3 above)	
Local content %, as calculated in terms of SATS 1286:2011	

PA36: Declaration Certificate for Local Production and Content for Designated Sectors.

(This form has been aligned with NT - SBD 6.2)

If the bid is for more than one product, the local content percentages for each product contained in Declaration C shall be used instead of the table above.

The local content percentages for each product has been calculated using the formula given in clause 3 of SATS 1286:2011, the rates of exchange indicated in paragraph 3.1 above and the information contained in Declaration D and E.

(d) I accept that the Procurement Authority / Institution has the right to request that the local content be verified in terms of the requirements of SATS 1286:2011.

(e) I understand that the awarding of the bid is dependent on the accuracy of the information furnished in this application. I also understand that the submission of incorrect data, or data that are not verifiable as described in SATS 1286:2011, may result in the Procurement Authority / Institution imposing any or all of the remedies as provided for in Regulation 14 of the Preferential Procurement Regulations, 2017 promulgated under the Preferential Policy Framework Act (PPPFA), 2000 (Act No. 5 of 2000).

SIGNATURE: _____

WITNESS No. 1 _____

DATE: _____

WITNESS No. 2 _____

DATE: _____