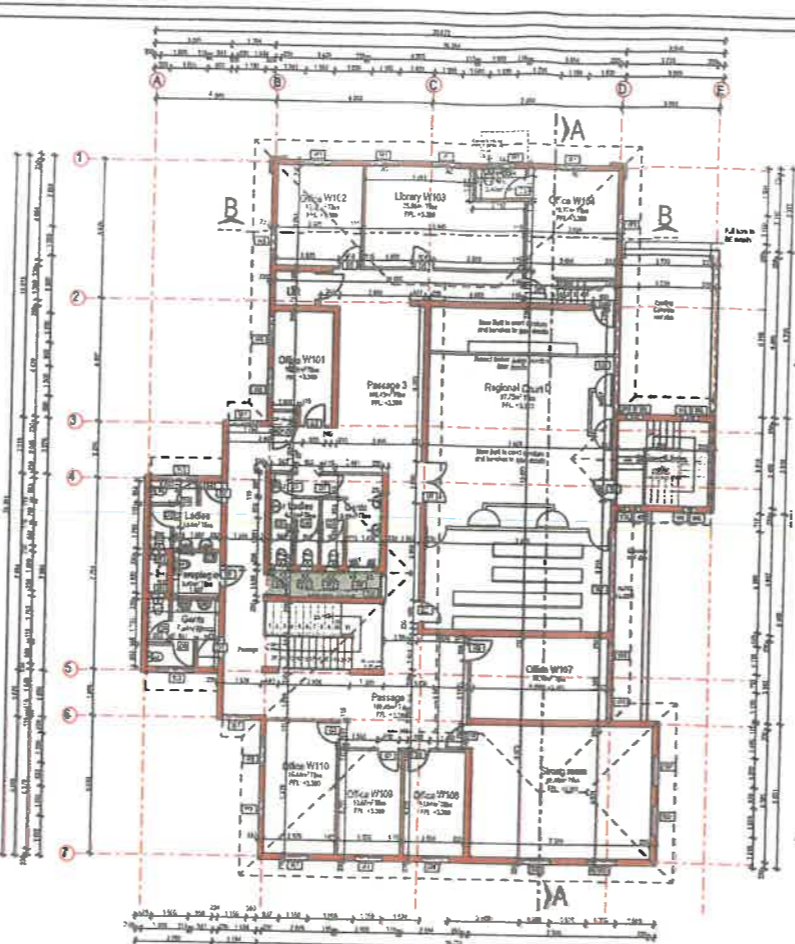
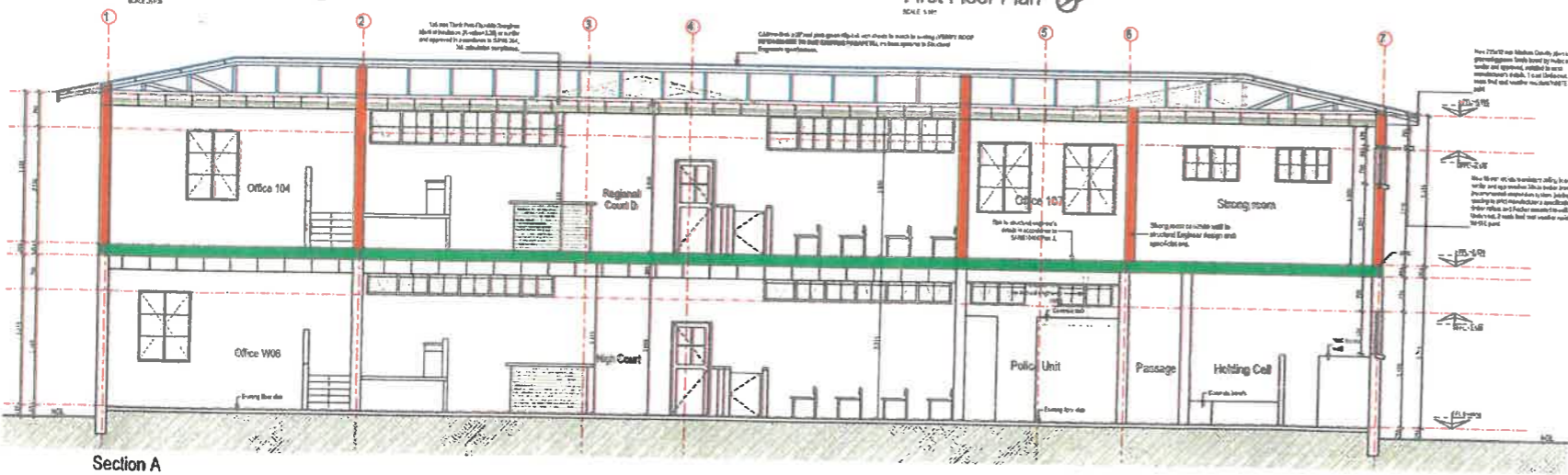


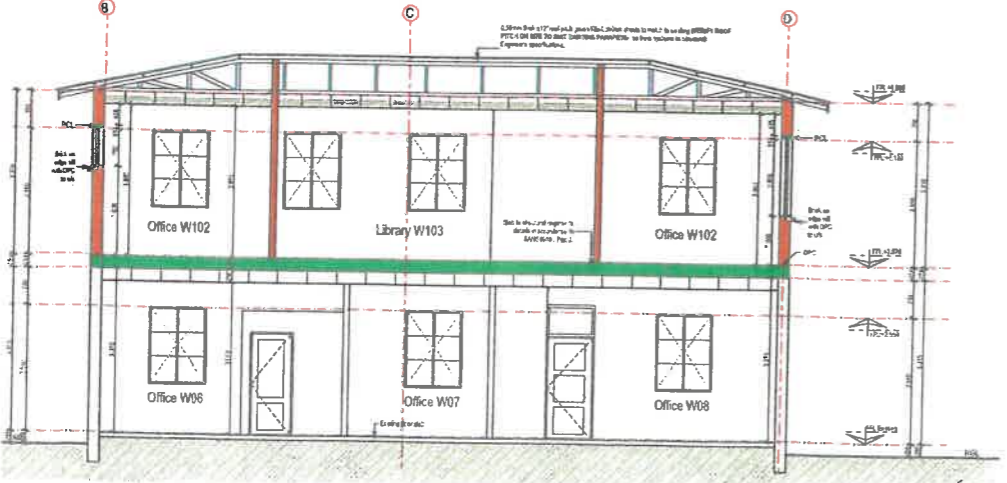
Ground Floor Plan
SCALE 1:100



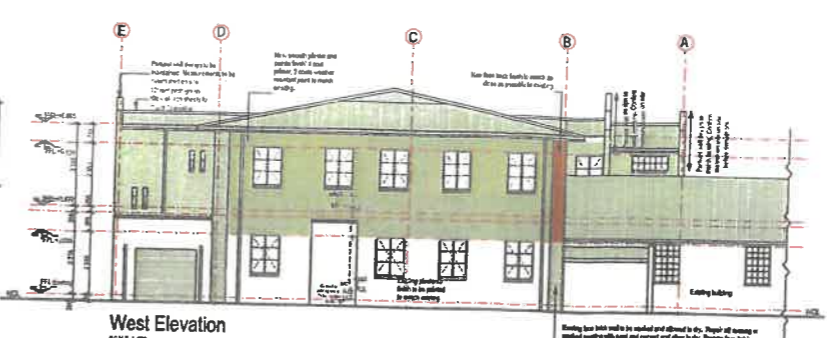
First Floor Plan
SCALE 1:100



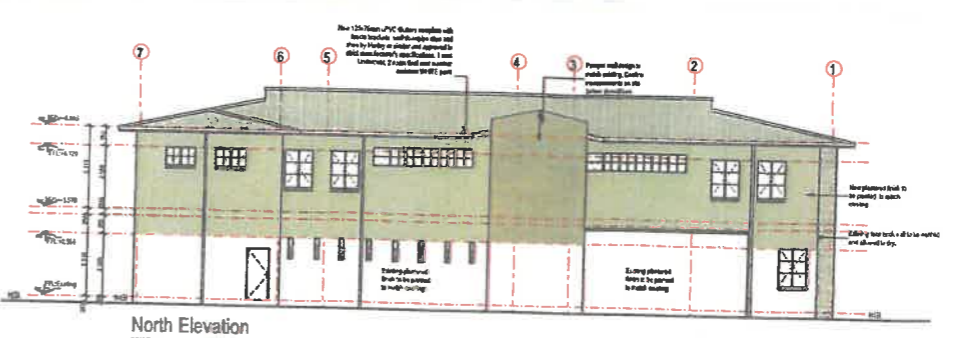
Section A
SCALE 1:40



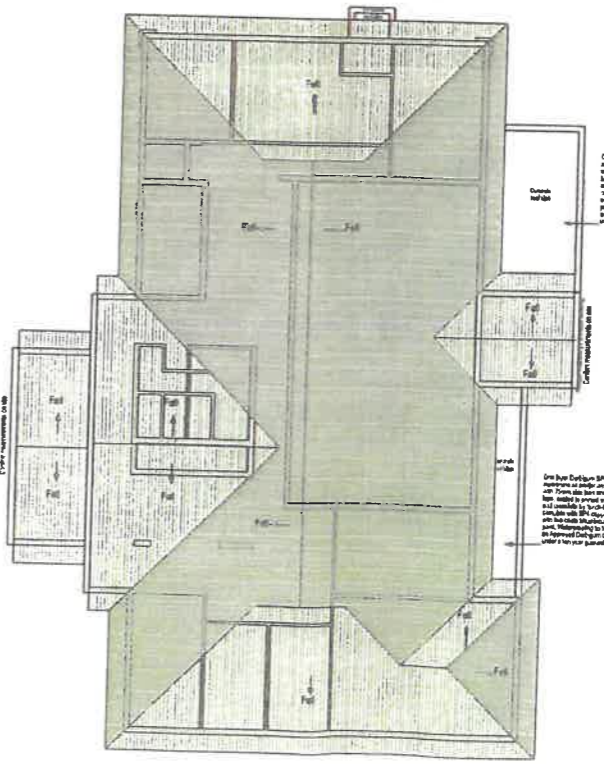
Section B
SCALE 1:40



West Elevation
SCALE 1:100



North Elevation
SCALE 1:100



Roof Plan
SCALE 1:40

This drawing is a preliminary design and is not to be used for construction purposes. It is intended for use as a guide only. All dimensions are approximate and subject to change. The client is responsible for the accuracy of the information provided. All dimensions are in millimeters unless otherwise stated. The drawing is the property of the architect and shall remain confidential. It is not to be used for any other purpose without the written consent of the architect. The architect is not responsible for the accuracy of the information provided by the client. The architect is not responsible for the accuracy of the information provided by the client. The architect is not responsible for the accuracy of the information provided by the client.

Rev. #	Date	Description
1	15/03/2021	Issue for tender

TENDER
Project Title:
RESTORATIVE REPAIRS TO FIRE DAMAGED SECTION OF DE AAR MAGISTRATE COURT

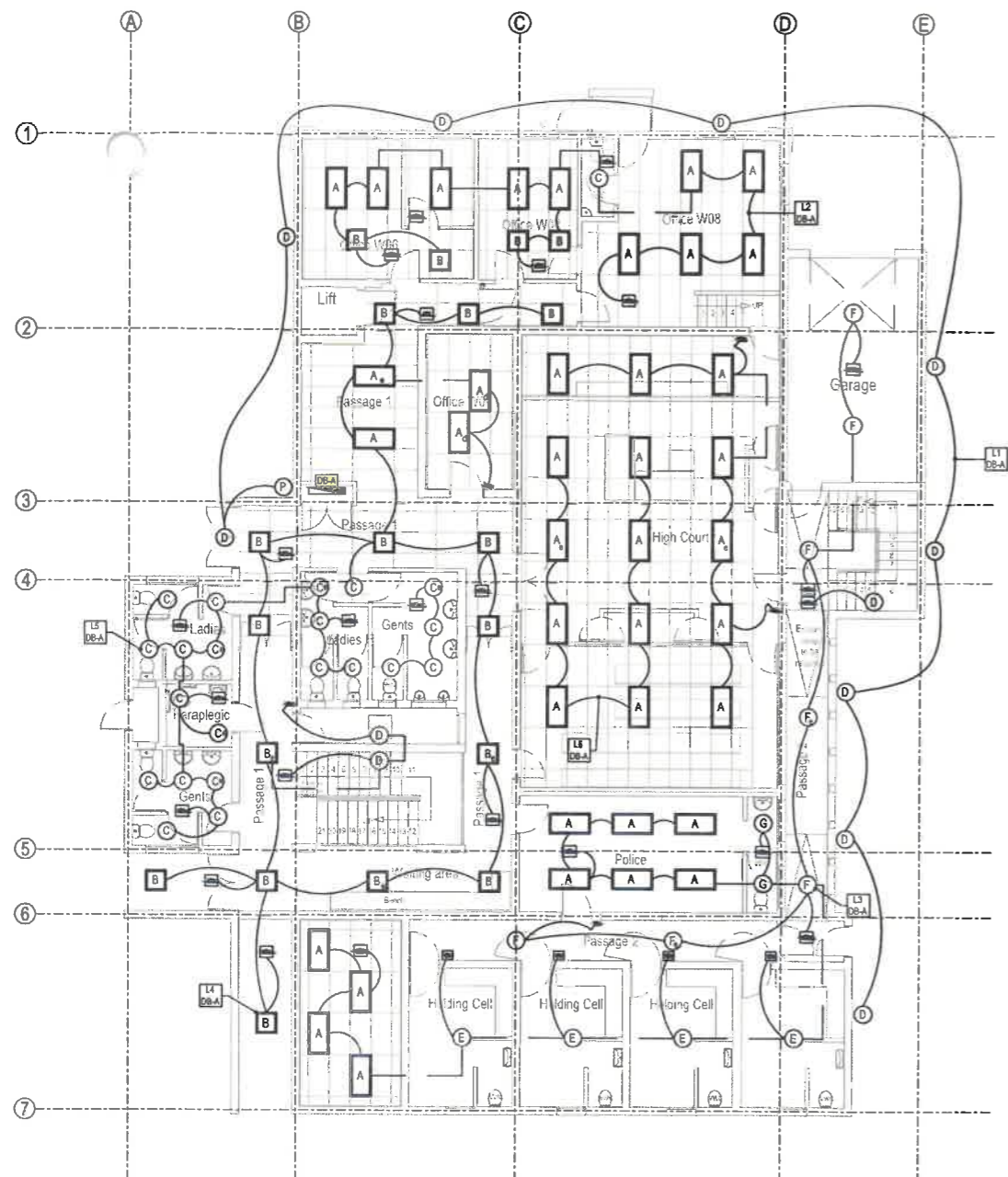
End User Contact:
the day & co
Consultant:
Justice and Crime Justice Dept, PUBLIC WORKS
Client:
public works
Department: Public Works, REPUBLIC OF SOUTH AFRICA

Prepared by:
Phunga Consulting Engineers
1401 21st Ave, Suite 201, Durban, KwaZulu-Natal, 4001
Tel: 031 201 1111, Fax: 031 201 1112, Email: info@phunga.co.za

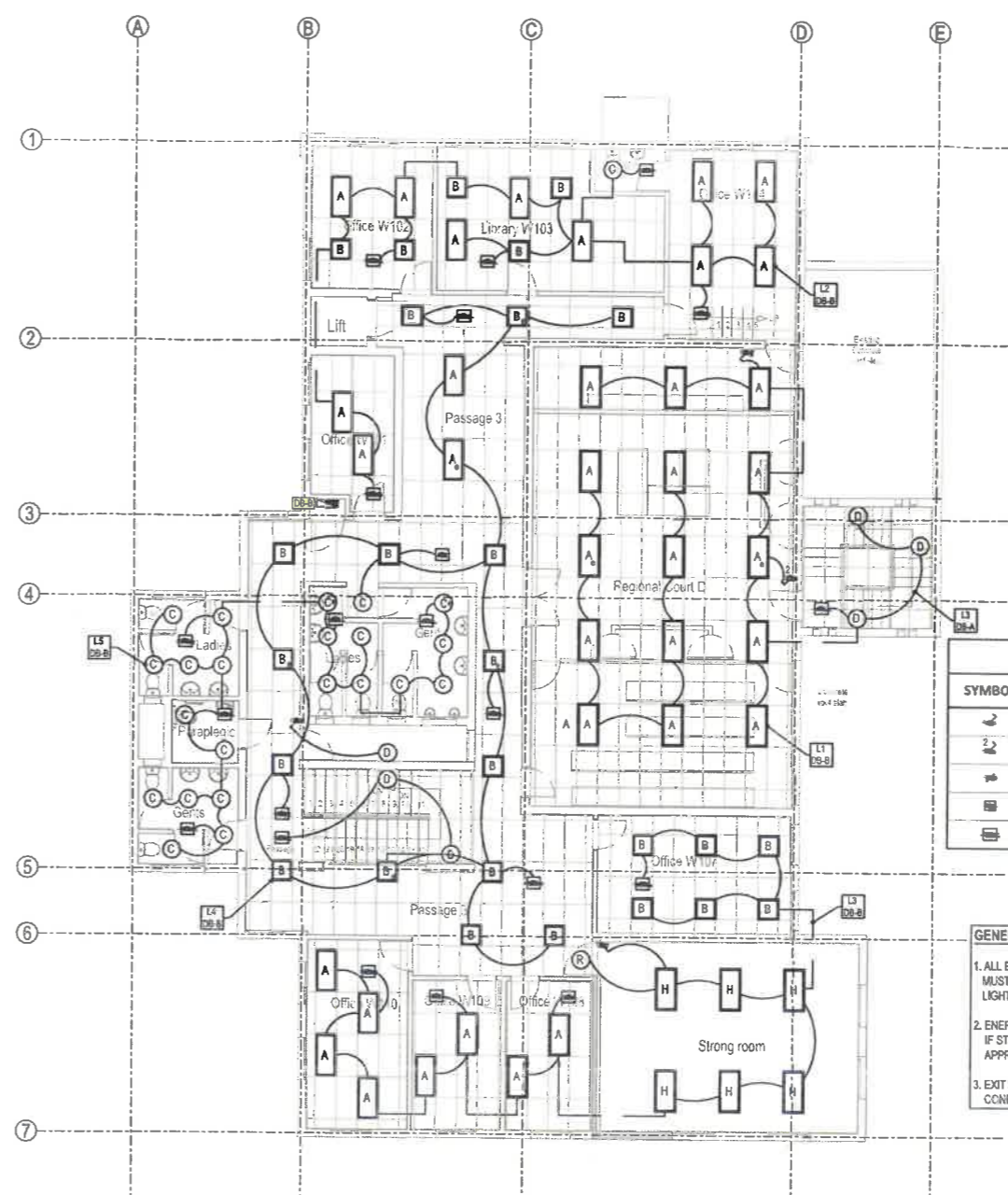
Project Title:
FLOOR PLANS, SECTIONS, ELEVATIONS, ROOF PLAN

Stage:
TENDER

Drawn by: **ALG** Checked by: **SM**
Date: **10-09-2021** Scale:
SAC: **DRW/PL/001**
A1: **SZ1-02-001**



GROUND FLOOR - LIGHTING LAYOUT
SCALE 1 : 100



FIRST FLOOR - LIGHTING LAYOUT
SCALE 1 : 100

LIGHTING LEGEND	
SYMBOL	Description
	1 WAY LIGHT SWITCH; AFFL 1400
	2 WAY LIGHT SWITCH; AFFL 1400
	DIMMABLE LIGHT SWITCH
	VANDAL PROOF LIGHT SWITCH; AFFL 1400
	CEILING MOUNTED MOTION SENSOR

- GENERAL NOTES**
1. ALL EXISTING LIGHT SWITCH POSITION MUST BE CONSIDERED BEFORE NEW LIGHT SWITCH POSITIONS ARE CHASED
 2. EMERGENCY BACKUP LIGHTING WILL BE OMITTED IF STANDBY DIESEL GENERATOR INSTALLATION IS APPROVED FOR THE PROJECT
 3. EXIT EMERGENCY LIGHTS POSITIONS TO BE CONFIRMED BY THE MECHANICAL FIRE ENGINEER.

SCHEDULE OF LIGHTING LUMINAIRES							
Symbol	Type	Description	LED Lamp (Watts)	Lm (luminaire)	Mounting Height	Colour	IP
A	A	Recessed ceiling luminaire, 1200 x 600 module, 200W LED panel light, 4000K, with SA plug and 3.5m canopy cord	100W	7000	Recessed ceiling	White	20
A ₀	A ₀	Recessed ceiling luminaire, 1200 x 600 module, 200W LED panel light, 4000K, with SA plug and 3.5m canopy cord	70W	7000	Recessed ceiling	White	20
A ₁	A ₁	Recessed ceiling luminaire, 1200 x 600 module, 200W LED panel light, 4000K, with SA plug and 3.5m canopy cord	70W	7000	Recessed ceiling	White	20
B	B	Recessed ceiling luminaire, 600 x 600 module, 200W LED panel light, 4000K, with SA plug and 3.5m canopy cord	30W	3000	Recessed ceiling	White	20
B ₀	B ₀	Recessed ceiling luminaire, 600 x 600 module, 200W LED panel light, 4000K, with SA plug and 3.5m canopy cord	30W	3000	Recessed ceiling	White	20
C	C	Ceiling recessed 20W LED down light, 4000K, with SA plug and 3.5m canopy cord	20W	1600	Recessed ceiling mounted	White	20
C ₀	C ₀	Ceiling recessed 20W LED down light, 4000K, with SA plug and 3.5m canopy cord	20W	1600	Recessed ceiling mounted	White	20
C ₁	C ₁	Ceiling recessed 10W LED down light, 4000K	10W	800	Recessed ceiling mounted	White	20
D	D	Outdoor, 16W LED rectangular bulkhead, with prismatic, clear diffuser	16W	1100	2500mm AFL	Black, powder coated	65
E	E	Vandal proof, 16W LED luminaire with prismatic, clear diffuser	16W	1100	Ceiling	White	65
F	F	Recessed ceiling luminaire, 40W LED panel light, 4000K, with SA plug and 3.5m canopy cord	40W	7000	Surface ceiling mounted	White	65
F ₀	F ₀	Recessed ceiling luminaire, 40W LED panel light, 4000K, with SA plug and 3.5m canopy cord	40W	7000	Surface ceiling mounted	White	65

SCHEDULE OF LIGHTING LUMINAIRES							
Symbol	Type	Description	LED Lamp (Watts)	Lm (luminaire)	Mounting Height	Colour	IP
G	G	Outdoor, 17W LED round bulkhead, 4000K, uplight luminaire	17W	2600	Surface ceiling mounted	Black, powder coated	65
H	H	Surface ceiling mounted, 1200 x 600 module, 200W LED panel light, 4000K, with 3 hour, 3000mAh, nickel-cadmium, 1 x 2.5m battery pack	70W	7000	Recessed ceiling	White	20
H ₀	H ₀	Surface ceiling mounted, 1200 x 600 module, 200W LED panel light, 4000K, with 3 hour, 3000mAh, nickel-cadmium, 1 x 2.5m battery pack	70W	7000	Recessed ceiling	White	20
I	I	Surface ceiling mounted, 600 x 600 module, 100W LED panel light, 4000K	30W	3000	Recessed ceiling	White	20
I ₀	I ₀	Surface ceiling mounted, 600 x 600 module, 100W LED panel light, 4000K, with 1 hour, 3000mAh, nickel-cadmium, 1 x 2.5m battery pack	30W	3000	Recessed ceiling	White	20
J	J	Ceiling recessed emergency exit light, with 3 hour, 3000mAh, nickel-cadmium battery pack, 4000K	180W	18000	Ceiling	Standard	43
J ₀	J ₀	Vandal recessed emergency exit light, with 3 hour, 3000mAh, nickel-cadmium battery pack, 4000K	180W	18000	Ceiling	Standard	43
K	K	Outdoor, 20W LED rectangular oval bulkhead, 4000K, prismatic-clear diffuser	20W	1500	2500mm AFL	Black, powder coated	65
L	L	Recessed ceiling luminaire, 40W LED panel light, 4000K, with SA plug and 3.5m canopy cord	40W	7000	Ceiling	Standard	20
M	M	LED luminaire, 20W LED panel light, 4000K, with SA plug and 3.5m canopy cord	20W	1600	Ceiling	Standard	20
P	P	16A Photocell in weather proof enclosure	-	-	Surface mounted, 2500mm AFL	Standard	65
R	R	Surface mounted, LED light with red diffuser	100W	10000	Surface mounted, 2500mm above floor	Standard	65

All LED luminaires shall be the Safety Requirements Mark, SANS 0008 and Performance Requirements Mark, SANS 475 and be rated with high-frequency, flicker-free drivers with a frequency greater than 100Hz.

No.	DATE	AMENDMENT	D.P.W.
A1	03/04	Issued for Tender	

Copyright vests in the Department of Public Works

as-built drawings

certified as-built drawings as per Centralised Drawing Archive AS-BUILT DRAWING REQUIREMENTS

name: _____

date: _____

professional registration no.: _____

cad file name: 3010-ELECTRICAL MASTER page type: A1

public works & infrastructure
Department: Public Works and Infrastructure
REPUBLIC OF SOUTH AFRICA

DIRECTOR-GENERAL
Adv SAM VUKELA

consultant

MVD Kalahari

Raadgerende Ingenieurs en Stadsontwerpers / Consulting Engineers and Town Planning

Du Toitspanweg 186 / Du Toitspan Road
Postbus / P.O. Box 580, Kimberley 8300
Tel: (053) 831 1890/90

E-Mail: adm@mvdkalahari.co.za
www.mvdkalahari.co.za
Level 1 B-BBEE Contributor

discipline: ELECTRICAL

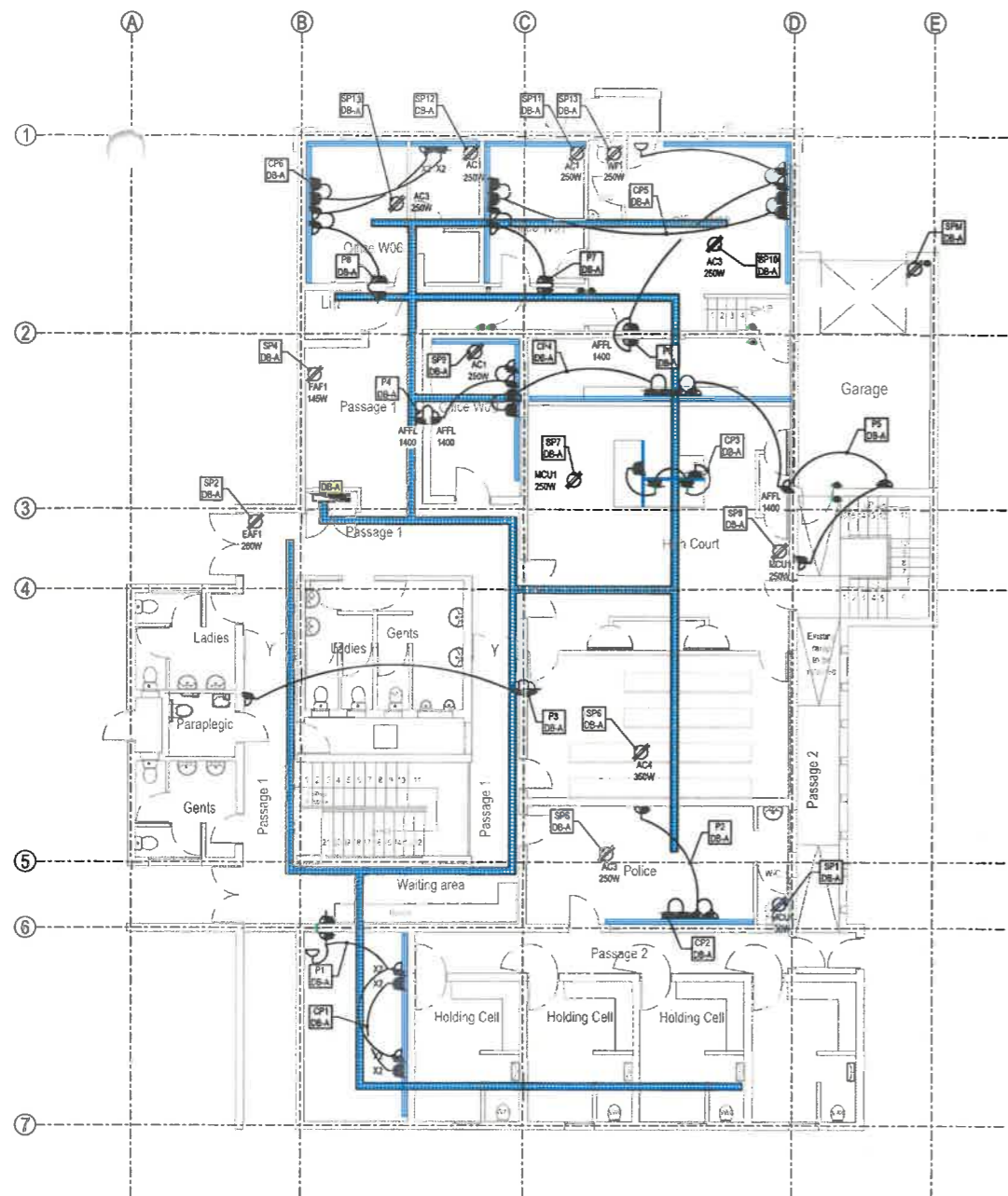
service: DE AAR MAGISTRATE COURT REPAIRS TO FIRE DAMAGE

WCS number: WCS055677

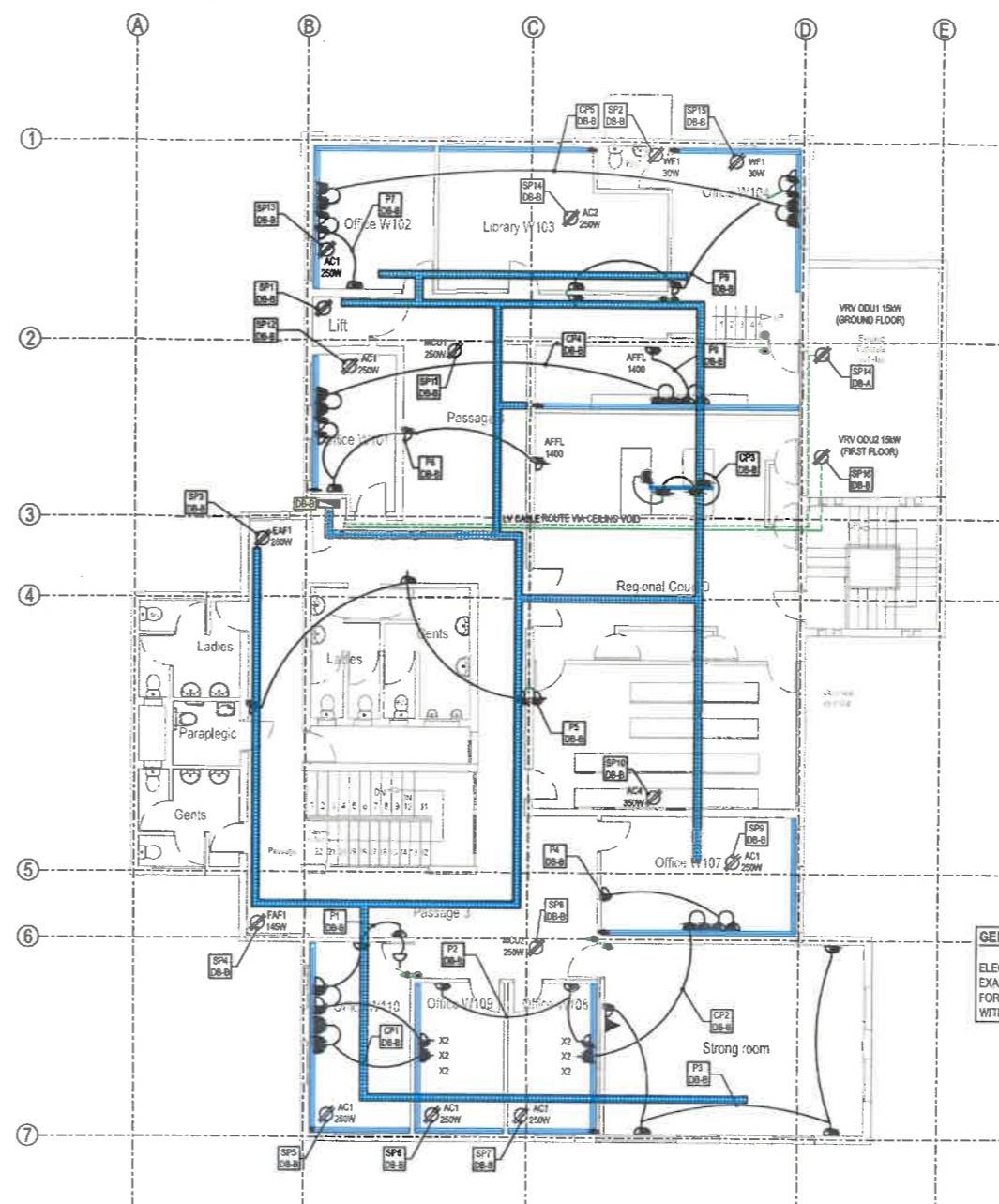
drawing title: GROUND & FIRST FLOOR - LIGHTING LAYOUT

ref.no: A1 designed: H. Jonck
scale: 1:100 drawn: H. Leemans
date: APRIL 2023 checked: H. Jonck
DPW drawing number: E10812-002

FOR TENDER

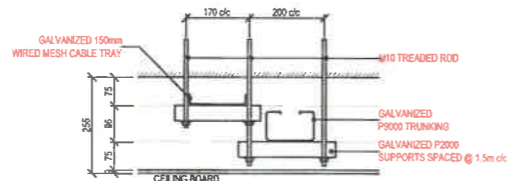


GROUND FLOOR - SMALL POWER LAYOUT
SCALE 1 : 100



FIRST FLOOR - SMALL POWER LAYOUT
SCALE 1 : 100

SMALL POWER LEGEND	
SYMBOL	Description
	TWO CHANNEL 0-LINE, STEEL POWDER COATED POWER SKIRTING
	DEDICATED SINGLE 16A SSO IN POWER SKIRTING
	NORMAL SINGLE 16A SSO IN POWER SKIRTING
	NORMAL SINGLE 16A SSO WALL MOUNTED AT 400 AFFL
	NORMAL SINGLE 16A SSO IN CEILING VOID
	DOUBLE POLE ISOLATOR
	WALL MOUNTED DB BOARD
	100 x 50mm DRAWBOX FLUSH IN WALL AT 1400 AFFL WITH 9 20mm CONDUIT TO CEILING VOID FOR ACCESS CONTROL BY OTHER
	4x 8 25mm PVC CONDUIT, VERTICAL FLUSH IN WALL FROM CEILING VOID TO DRAW BOX BEHIND POWER SKIRTING (X2 POWER AND X2 DATA /TEL)



TYPICAL CEILING DUCTING DETAIL - SECTION VIEW
SCALE 1 : 10

GENERAL NOTES
ELECTRICAL CONTRACTOR MUST COORDINATE THE EXACT POSITION OF EACH POWER POINT REQUIRED FOR THE AIR CONDITIONING AND EXTRACTION SYSTEM WITH THE MECHANICAL CONTRACTOR

No.	DATE	AMENDMENT	D.P.W.
A1	03/04	Issued for Tender	

Copyright vests in the Department of Public Works
as-built drawings
certified as-built drawings as per Centralised Drawing Archive AS-BUILT DRAWING REQUIREMENTS
name: _____
date: _____
professional registration no.: _____

cad file name: 3010-ELECTRICAL MASTER page type: A1

consultant
MVD Kalahari
Roadgewende Ingenieurs en Streeklaniering / Consulting Engineers and Town Planning

Du Toitpanweg 186 / Du Toitpan Road
Postbus / P.O. Box 580, Kimberley 8300
Tel: (053) 831 186/899
E-Mail: admin@mvdkalahari.co.za
www.mvdkalahari.co.za
Level 1 0-5BEE Contributor

discipline: ELECTRICAL

service: DE AAR
MAGISTRATE COURT
REPAIRS TO FIRE DAMAGE

WCS number: WCS055677

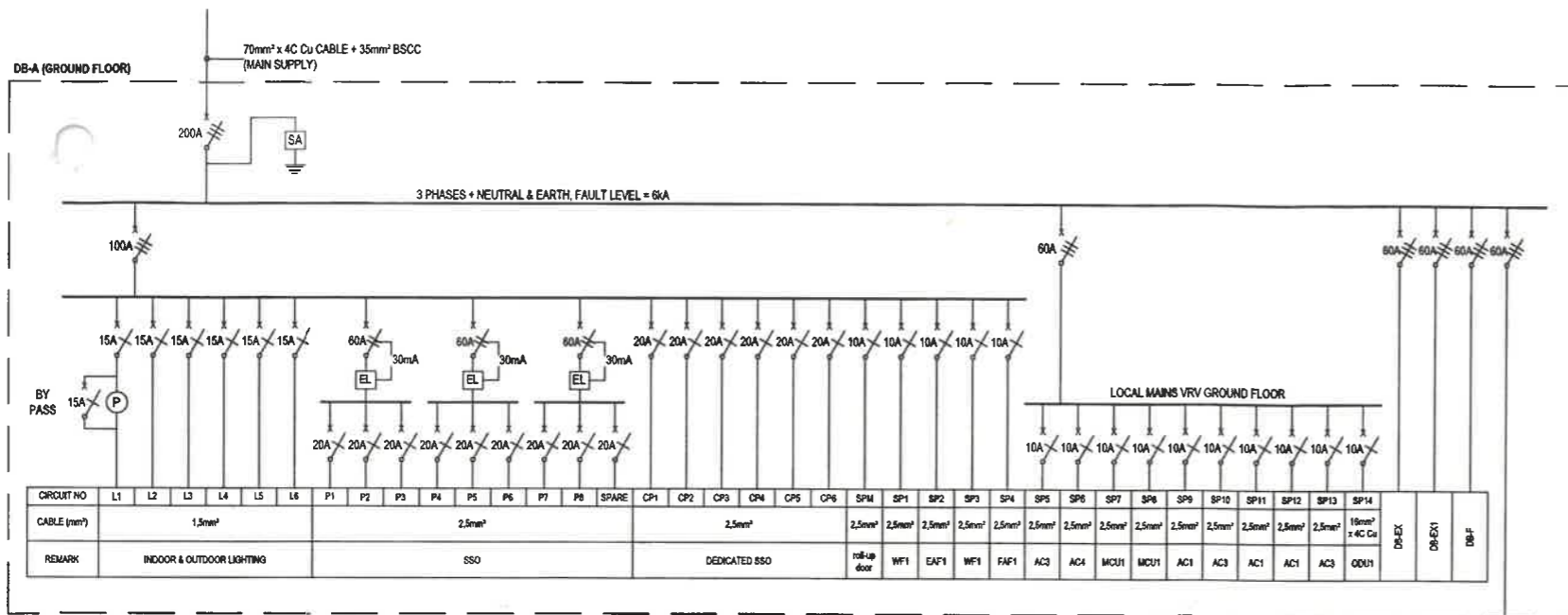
drawing title: GROUND & FIRST FLOOR - SMALL POWER LAYOUT

ref.no. A1 designed H. Jonck
scale 1:100 drawn H. Leemans
date APRIL 2023 checked H. Jonck

DPW drawing number

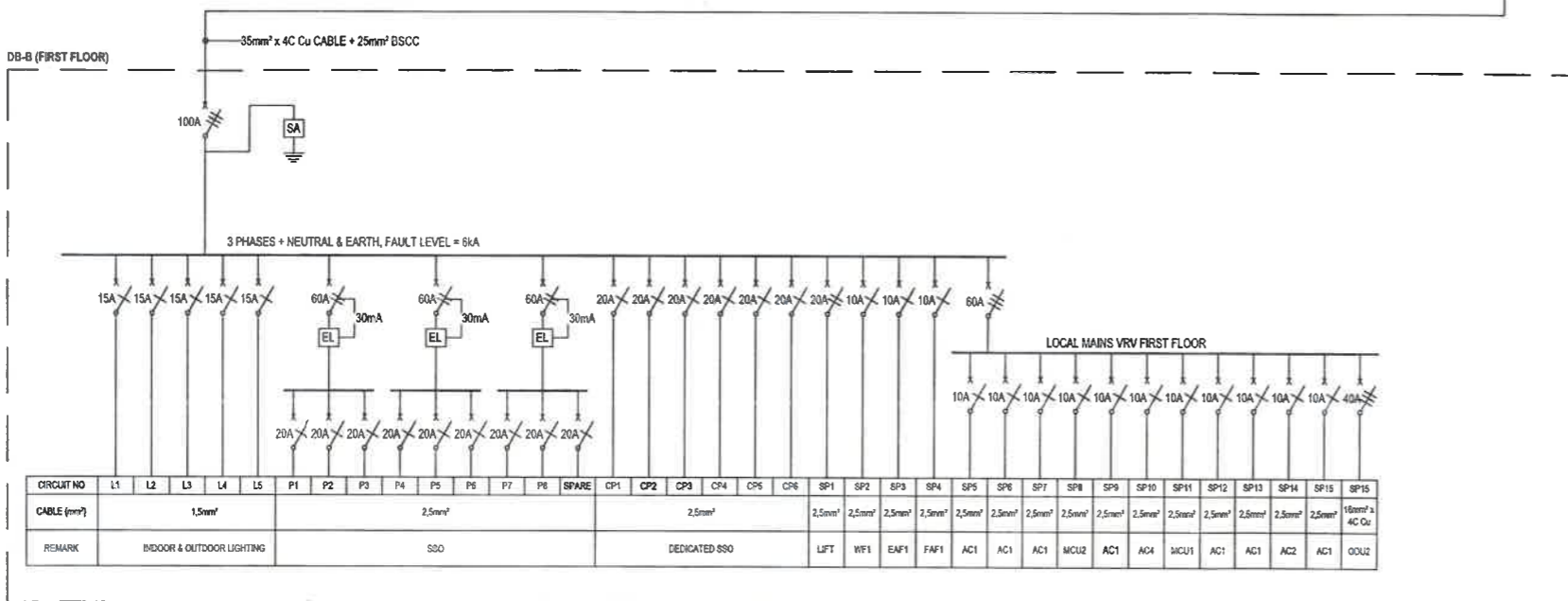
FOR TENDER

E10812-001



LEGEND

SYMBOL	DESCRIPTION
	SURGE ARRESTOR
	SINGLE POLE CIRCUIT BREAKER
	DOUBLE POLE CIRCUIT BREAKER
	TRIPLE POLE CIRCUIT BREAKER
	16A PHOTOCCELL
	EARTH LEAKAGE WITHOUT OVERLOAD PROTECTION



No.	DATE	AMENDMENT	D.P.W.
A1	03/04	Issued for Tender	

Copyright vests in the
Department of Public Works

as-built drawings

certified as-built drawings as per Centralised Drawing
Archive AS-BUILT DRAWING REQUIREMENTS

name: _____

date: _____

professional registration no.: _____

cad file name: 3010-ELECTRICAL MASTER page type: A1



Du Toitspanning 196 / Du Toitspan Road | E-Mail: admin@mvd-kalahari.co.za
Postbus / P.O. Box 560, Kimberley 8300 | www.mvd-kalahari.co.za
Tel: (053) 831 180/990 | Level 1 B-BBEE Contributor

discipline: ELECTRICAL

service:

**DE AAR
MAGISTRATE COURT
REPAIRS TO FIRE DAMAGE**

WCS number: WCS055677

drawing title: SINGLE LINE DIAGRAM

refNo: A1 designed: H. Jonck
scale: 1:100 drawn: H. Leemans
date: APRIL 2023 checked: H. Jonck

DPW drawing number

FOR TENDER

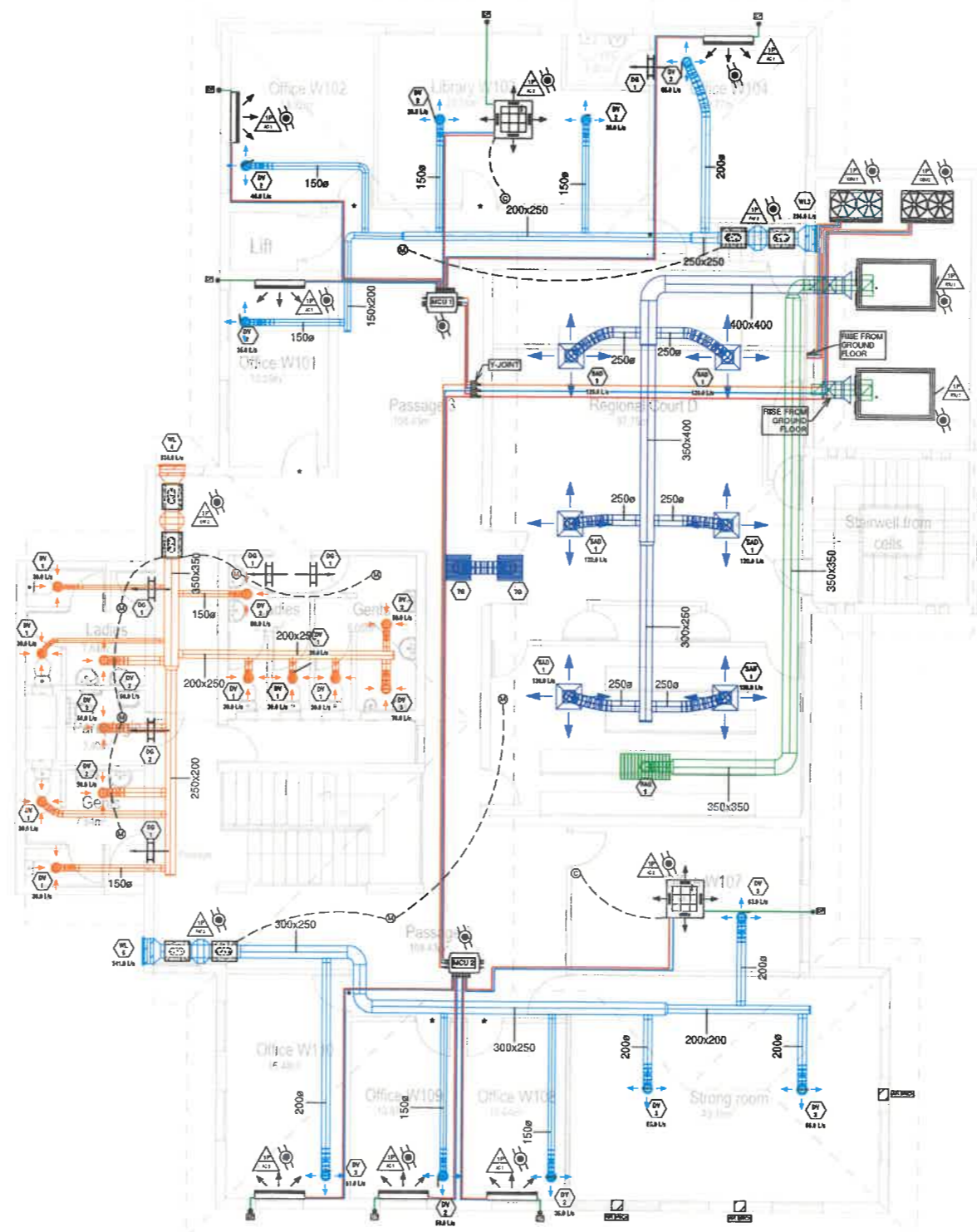
E10812-003

MECHANICAL EQUIPMENT SCHEDULE						
REF	DESCRIPTION	COOLING CAPACITY	HEATING CAPACITY	POWER CONSUMPTION	PIPES LIQUID/GAS	QTY
AC 1	HIGH/MIDWALL	3.6Kw	4.0Kw	1ph/230V/50Hz/42W	6.35/12.7mm	5
AC 2	4-WAY CASSETTE	5.6Kw	6.3Kw	1ph/230V/50Hz/32W	6.35/12.7mm	2
AC 3	HIGH/MIDWALL	5.6Kw	6.3Kw	1ph/230V/50Hz/48W	6.35/12.7mm	1
ODU 1	VRV OUTDOOR UNIT	28Kw	31.5Kw	3ph/380V/50Hz/12.6kW	-	1
ODU 2	VRV OUTDOOR UNIT	56Kw	63Kw	3ph/380V/50Hz/14.18kW	-	1
RTU 1	ROOFTOP UNIT	16.27Kw	15.24Kw	3ph/380V/50Hz/5.0kW	-	1
RTU 1	ROOFTOP UNIT	16.27Kw	15.24Kw	3ph/380V/50Hz/5.0kW	-	1

FAN SCHEDULE				
REF	DESCRIPTION	AIR FLOW	POWER CONSUMPTION	QTY
EAF 1	Ø315mm IN-LINE TUBE FAN	530 L/s	1ph/230V/50Hz/260W	1
FAF 2	Ø200mm IN-LINE TUBE FAN	224 L/s	1ph/230V/50Hz/140W	1
FAF 3	Ø315mm IN-LINE TUBE FAN	341 L/s	1ph/230V/50Hz/160W	1

AIR TERMINAL SCHEDULE				
REF	DESCRIPTION	AIR FLOW	DIMENSIONS	QTY
WL 3	WEATHER LOUVRE	530 L/s	600 x 400	1
WL 4	WEATHER LOUVRE	224 L/s	250 x 250	1
DV 1	DISC VALVE	30 L/s	Ø150	7
DV 2	DISC VALVE	50 L/s	Ø150	11
DV 3	DISC VALVE	70 L/s	Ø200	6
SAD 1	SUPPLY AIR DIFFUSER	120 L/s	600 x 600	8
DG 1	DOOR GRILLE	-	300 x 200	4
DG 2	DOOR GRILLE	-	150 x 200	1
RAG 1	RETURN AIR GRILLE	-	900 x 400	1
TG 1	TRANSFER AIR GRILLE	-	200 x 200	2

HEAT RECOVERY BOX			
REF	DESCRIPTION	QTY	POWER CONSUMPTION
MCU 1	HEAT RECOVERY BOX 4 PORT	1	1ph/230V/50Hz
MCU 2	HEAT RECOVERY BOX 6 PORT	1	1ph/230V/50Hz



- NOTES:**
- DUCTING TO BE MANUFACTURED IN ACCORDANCE TO SMOGA STANDARDS
 - ALL DUCT DIMENSIONS INCLUDING DIMENSIONS FOR INSULATED DUCTS REFERS TO THE SHEET METAL SIZE.
 - ALL DUCT PASSING THROUGH CONCRETE OR BRICK WALLS SHALL BE ISOLATED FROM THE WALLS BY MEANS OF A HIGH DENSITY GLOSS FIBRE COLLAR OF AT LEAST 25mm IN THICKNESS.
 - GALVANISED STEEL SHALL BE USED FOR ALL AIR-CONDITIONING AND VENTILATION DUCTING
 - ALL DUCTING SHALL BE PROVIDED WITH MEZZ FLANGES.
 - ALL SUPPLY AND RETURN AIR DUCTING EXPOSED TO OUTDOORS SHALL BE EXTERNALLY DOUBLE CLADDED AND INSULATED AGAINST DIRECT SOLAR HEAT GAINS.
 - ALL OPEN END DUCTS TO BE CAPPED OFF WITH PLASTIC PRIOR TO DELIVERY TO SITE.
 - DUCT HANGERS
- | LONGEST DUCT DIMENSION (mm) | ROUND HANGER (mm) | GALVANISED STRIP HANGERS (mm) | SHELF ANGLES | HANGER SPACING (m) |
|-----------------------------|-------------------|-------------------------------|--------------|--------------------|
| UP TO 760 | 6 | 25x16 | 25x25x3 | 3.0 |
| 761 TO 1000 | 10 | 35x16 | 38x38x3 | 3.0 |
| 1000 TO 2100 | 10 | 25x16 | 50x50x3 | 2.4 |
| 2100 TO 2400 | 10 | 25x16 | 50x50x3 | 2.4 |
| 2401 TO ABOVE | 12 | 25x16 | 50x50x3 | 2.4 |
- ALL DIFFUSER SUPPLY FLEXIBLE TO COME ON JUBILEE CLAMPS AND SEALED WITH DUCT TAPE ON FINAL INSTALLATION.
 - ALL SUPPLY AIR DUCTING TO BE INSULATED EXTERNALLY WITH 25mm POLY FIBRE FACED FIBREGLASS TYPE FRK - ONLY AC DUCT
 - ALL FLEXIBLES TO BE THERMALLY INSULATED - ONLY AC DUCT
 - INDOOR UNIT AND OUTDOOR UNIT PAIRING IS AS PER NUMBER GROUPING ON DRAWING
- ELECTRICAL LEGEND**
- 1P 1 PHASE ELECTRICAL EQUIPMENT
 - 3P 3 PHASE ELECTRICAL EQUIPMENT
 - SA PLUG COMPLETE WITH SHAVED EARTH PINS
 - AC-DB
 - P 8000 UNISTRUT 2 OFF

LEGEND

- MID-WALL SPLIT
- CEILING CASSETTE UNIT
- DUCTED HIDEAWAY UNIT
- SUPPLY AIR DIFFUSER
- WEATHER LOUVRE
- DOOR GRILLE
- HEAT RECOVERY BOX (MCU)
- MOTION SENSOR
- CONTROLLER
- DOOR UNDERCUT

CLIENT

Department: Public Works and Infrastructure
REPUBLIC OF SOUTH AFRICA

ARCHITECTS

REVISIONS

REV.	DATE	BY	DESCRIPTION
A	14/07/2021	JLN	ISSUED FOR PRELIMINARY PURPOSES
B	15/07/2021	JLN	ISSUED FOR TENDER

ISSUED FOR

	PRELIMINARY APPROVAL	COUNCIL SUBMISSION INFORMATION
X	TENDER	AS BUILT

DE AAR MAGISTRATE COURT

Project

FIRST FLOOR HVAC LAYOUT

Description

9 Connor Ave
Woodsome
Blenheim 9301

TEL: 051 448 4864
FAX: 051 448 4123
E mail: info@mekan.co.za
Web Site: www.mekangroup.co.za
Reg no 2003-20339323

Drawn By: Heinrich Nelubuh
Design By: Napo Mokhatla
Project Engineer: Napo Mokhatla
P. Registration: 2018/101616
Date: 14/07/2021

Scale: 1:75

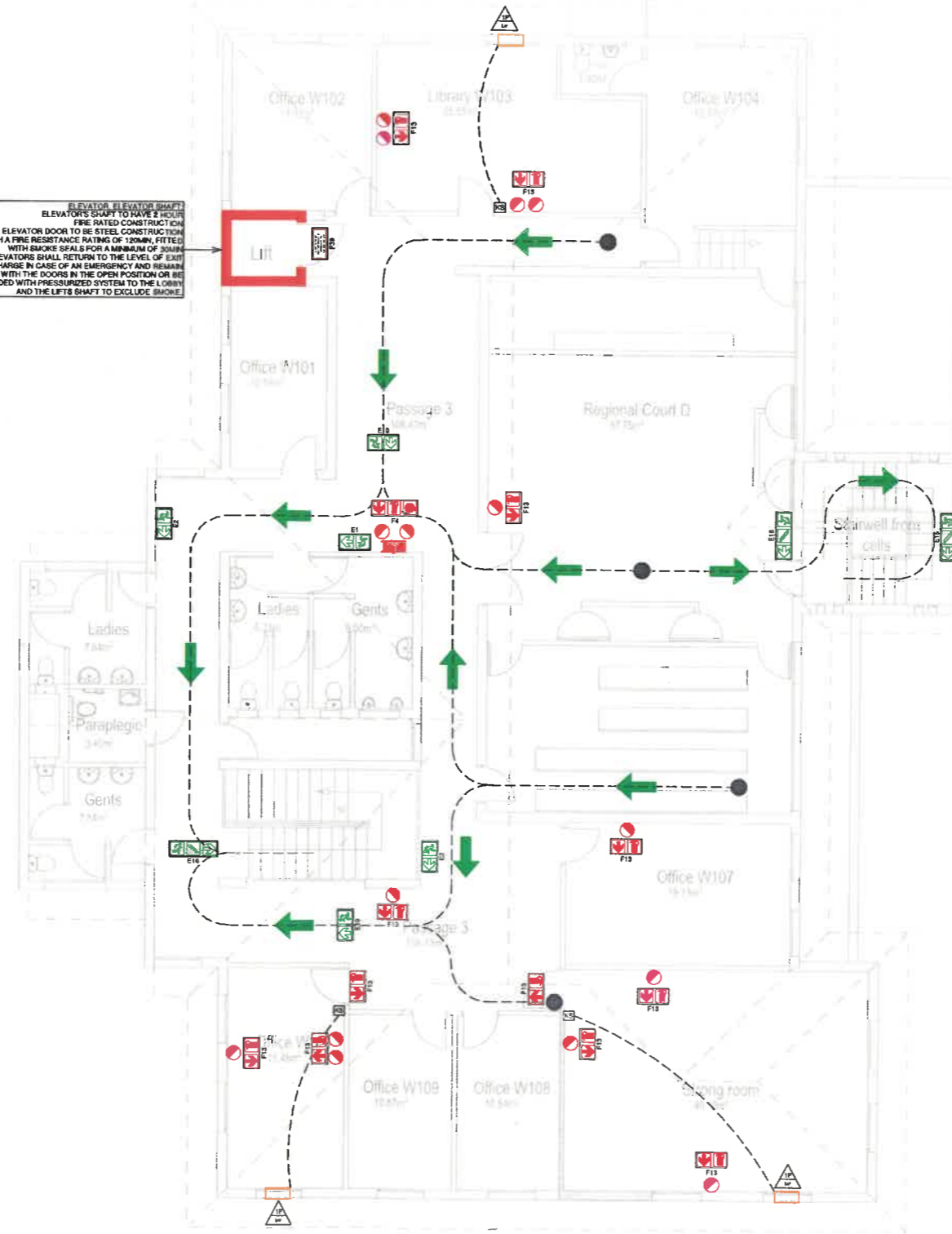
Drawing No: M304153-K5020-MV-201

REFERRAL DRAWINGS

DRAWING DESCRIPTION	DRAWING NO.	REV	REV DATE
FLOOR PLANS, SECTIONS, ELEVATIONS, ROOF PLAN	821-09-02-001	B	12-05-21

Ground Floor Plan

ELEVATOR/ELEVATOR SHAFT
ELEVATOR SHAFT TO HAVE 2 HOUR
FIRE RATED CONSTRUCTION
ELEVATOR DOOR TO BE STEEL CONSTRUCTION
WITH A FIRE RESISTANCE RATING OF 120MIN, FITTED
WITH SMOKE SEALS FOR A MINIMUM OF 30MIN
ELEVATORS SHALL RETURN TO THE LEVEL OF Lobbies
DISCHARGE IN CASE OF AN EMERGENCY AND REMAIN
THERE WITH THE DOORS IN THE OPEN POSITION OR BE
PROVIDED WITH PRESSURIZED SYSTEM TO THE LOBBY
AND THE LIFT SHAFT TO EXCLUDE SMOKE.



FIRE EQUIPMENT SCHEDULE			
ITEM	DESCRIPTION	LEGEND REF.	QTY
1	4.5KG DCP FIRE EXTINGUISHER	-	9
2	5KG CO ₂ FIRE EXTINGUISHER	-	5
3	F.E SIGNAGE + DIRECTIONAL RED ARROW SET	F13	13
4	F.E & F.H.R SIGNAGE + DIRECTIONAL RED ARROW SET	F4	1
5	EXIT SIGNAGE (LEFT, RIGHT & AHEAD)	E1, E2, E4, E6, E10	5
6	ESCAPE ROUTE SIGNAGE WITH STAIRS	E16	3

FIRE NOTES

THE FOLLOWING SANS 10400-T REQUIREMENTS APPLY:

- 4.1 GENERAL
- 4.2 SAFETY DISTANCES
- 4.3 DIFFERENT OCCUPANCIES IN A BUILDING
- 4.4 DIVISION AREA
- 4.5 FIRE PERFORMANCE
- 4.6 FIRE RESISTANCE OF OCCUPANCY-SEPARATING AND DIVISION-SEPARATING ELEMENTS
- 4.7 FIRE STABILITY OF STRUCTURAL ELEMENTS OR COMPONENTS
- 4.8 TENANCY-SEPARATING ELEMENTS
- 4.9 PARTITION WALLS AND PARTITIONS
- 4.10 PROTECTION OF OPENINGS
- 4.11 RAISED ACCESS AND SUSPENDED FLOORS OF COMBUSTIBLE MATERIAL
- 4.12 ROOF ASSEMBLIES AND COVERINGS
- 4.13 CEILINGS
- 4.14 FLOOR COVERINGS
- 4.15 INTERNAL FINISHES
- 4.16 PROVISION OF ESCAPE ROUTES
- 4.17 EXIT DOORS
- 4.18 FEEDER ROUTES
- 4.19 EMERGENCY ROUTES
- 4.20 DIMENSIONS OF COMPONENTS OF ESCAPE ROUTES
- 4.21 WIDTH OF ESCAPE ROUTES
- 4.22 BASEMENTS
- 4.23 STAIRWAYS AND OTHER CHANGES OF LEVEL ALONG ESCAPE ROUTES
- 4.24 VENTILATION OF STAIRWAYS IN AN EMERGENCY ROUTE
- 4.25 PRESSURIZATION OF EMERGENCY ROUTES AND COMPONENTS
- 4.26 OPENINGS IN FLOORS
- 4.27 EXTERNAL STAIRWAYS AND PASSAGES
- 4.28 LOBBIES, FOYERS AND VESTIBULES
- 4.29 MARKING AND SIGNPOSTING
- 4.30 PROVISION OF EMERGENCY LIGHTING
- 4.31 FIRE DETECTION AND ALARM SYSTEMS
- 4.32 PROVISION AND MAINTENANCE OF FIRE-FIGHTING EQUIPMENT, INSTALLATIONS AND FIRE PROTECTION SYSTEMS
- 4.33 WATER RETICULATION FOR FIRE-FIGHTING PURPOSES
- 4.34 HOSE REELS
- 4.35 HYDRANTS
- 4.36 AUTOMATIC SPRINKLER AND OTHER FIXED EXTINGUISHING SYSTEMS
- 4.37 PORTABLE FIRE EXTINGUISHERS
- 4.38 MOBILE FIRE EXTINGUISHERS
- 4.39 FIRE-STOPPING OF INACCESSIBLE CONCEALED SPACES
- 4.40 PROTECTION IN SERVICE SHAFTS
- 4.41 SERVICES IN STRUCTURAL OR SEPARATING ELEMENTS
- 4.42 SMOKE CONTROL
- 4.43 AIR-CONDITIONING AND ARTIFICIAL VENTILATION SYSTEMS
- 4.44 LIFT SHAFTS
- 4.45 LIFTS
- 4.46 FIREMEN'S LIFT
- 4.47 STRETCHER LIFT
- 4.48 STAGE AND BACKSTAGE AREAS
- 4.49 SEATING ARRANGEMENTS IN AUDITORIUMS OR HALLS AND ON GRANDSTANDS
- 4.50 PARKING GARAGES
- 4.51 OPERATING THEATRES AND INTENSIVE, HIGH OR CRITICAL CARE UNITS
- 4.52 INSTALLATION OF LIQUID FUEL DISPENSING PUMPS AND TANKS
- 4.53 INSTALLATION OF OTHER TANKS
- 4.54 ACCESS FOR FIRE-FIGHTING AND RESCUE PURPOSES
- 4.55 PRESUMED FIRE RESISTANCE OF BUILDING MATERIALS AND COMPONENTS
- 4.56 BUILDING MATERIALS

LEGEND

- 30m FIRE HOSE REEL + 2 x 4,5kg DCP FE
- 4,5kg DCP FE
- 5kg CO₂ FE
- FIRE ESCAPE DIRECTION ARROW
- 120MIN FIRE WALL
- MANUAL KEY SWITCH

FIRE SIGNAGE

- E1
- E2
- E4
- E6
- E10
- F4
- F13

CLIENT



ARCHITECTS



REVISIONS

REV.	DATE	BY	DESCRIPTION
A	14/07/2021	H.N.	ISSUED FOR PRELIMINARY PURPOSES
B	12/08/21	H.N.	ISSUED FOR TENDER

ISSUED FOR

	PRELIMINARY	COUNCIL SUBMISSION
APPROVAL		INFORMATION
COSTING		CONSTRUCTION
X TENDER		AS BUILT

DE AAR MAGISTRATE COURT

FIRST FLOOR FIRE PROTECTION LAYOUT



Drawn By	Design By	Project Engineer	Authorisation	Date
Hendrich Ntshuh	Napo Mokhatla	Napo Mokhatla	2018/01/05	14/07/2021

Design	Senior Engineer	Authorisation	Scale
MECHANICAL	Eongani Mkhwanjani	2018/04/12	As indicated

Drawing No: M304153-K5020-MF-501 Rev: B

Ground Floor Plan

REFERRAL DRAWINGS			
DRAWING DESCRIPTION	DRAWING NO.	REV	REV DATE
FLOOR PLANS, SECTIONS, ELEVATIONS, ROOF PLAN	201-08-00-001	B	12-08-21