

- NOTES:
1. This drawing may only be used for HVAC services.
 2. To prepare his construction/shop drawing, the HVAC sub-contractor must inspect all the architects drawings including structural and other services design drawings pertaining to the works and shall acquaint themselves with the general arrangement of all other services and ensure that in fixing their work it will not obstruct the fixing or future maintenance of other services.
 3. Any un-clarities must be brought to the attention of the mechanical engineer before close of tender.
 4. The HVAC sub-contractor is responsible for correct field dimensions, clearances and heights, quantities, fabrication processes and techniques of construction & co-ordination of his work with that of all other trades providing all devices necessary for safe and satisfactory operation.
 5. Final site measurements must be made by the HVAC sub-contractor before manufacturing or ordering of any equipment.
 6. All air diffusion equipment to be powder coated to an architect approved colour.
 7. All specified equipment must be installed according to manufacturer's specification.
 8. All HVAC equipment to be protected against vibrations by means of anti vibration mountings.
 9. The main contractor shall be responsible for all openings in walls, ceiling, doors for HVAC items of equipment.
 10. Refrigerant piping, control and electrical wiring in ceiling void to run on cable tray - Exposed piping and wiring to run in trunking.
 11. Drawing must be read in conjunction with the relevant HVAC specification and Legend sheet.

Type Mark	Type	Capacity (kW)	Power supply (kW/V/ph/Hz)	Qty
AC-01	Mid-Wall Unit	3.5	1.1/240/1/50	2
AC-02	Mid-Wall Unit	4.5	1.3/240/1/50	1

General Notes:

1. This drawing is to be used for construction purposes only.
2. It is a condition of contract that the contractor shall be responsible for the accuracy of the information shown on this drawing and shall be liable for any errors or omissions.
3. The contractor shall be responsible for the accuracy of the information shown on this drawing and shall be liable for any errors or omissions.
4. The contractor shall be responsible for the accuracy of the information shown on this drawing and shall be liable for any errors or omissions.
5. The contractor shall be responsible for the accuracy of the information shown on this drawing and shall be liable for any errors or omissions.
6. The contractor shall be responsible for the accuracy of the information shown on this drawing and shall be liable for any errors or omissions.
7. The contractor shall be responsible for the accuracy of the information shown on this drawing and shall be liable for any errors or omissions.
8. The contractor shall be responsible for the accuracy of the information shown on this drawing and shall be liable for any errors or omissions.
9. The contractor shall be responsible for the accuracy of the information shown on this drawing and shall be liable for any errors or omissions.
10. The contractor shall be responsible for the accuracy of the information shown on this drawing and shall be liable for any errors or omissions.
11. The contractor shall be responsible for the accuracy of the information shown on this drawing and shall be liable for any errors or omissions.

REVISIONS:

No.	Description	Date	By
A	FOR THE DRAWING BOARD	2008/07/02	MECHANICAL
B	FOR THE DRAWING BOARD	2008/07/02	MECHANICAL
C	FOR THE DRAWING BOARD	2008/07/02	MECHANICAL

LEGEND: HVAC

- SINGLE PHASE ISOLATOR (BY OTHER)
- THREE PHASE ISOLATOR (BY OTHER)
- DRAIN POINT
- UNIT CONTROLLER
- UNDERCUT ZONE
- BALANCING DAMPER
- DIFFUSER
- REDWALL UNIT
- OUTDOOR UNIT
- CONDENSATE UNIT
- FIRE DAMPER
- FOUR-WAY BLOW CASSETTE UNIT
- INDUSTRIAL OUTDOOR UNIT
- REFRIGERANT PIPES
- CONDENSATE DRAIN PIPE
- RETURN PIPES
- SUPPLY PIPES
- CEILING FAN COIL UNIT

GALESHEWE SAPS: AIR CONDITIONING

DRAWING ISSUED FOR	
INFORMATION	
PRELIMINARY DESIGN	
DETAILED DESIGN	
TENDER	X
CONSTRUCTION	
AS BUILT	



All rights reserved by the Department of Public Works and Infrastructure, South Africa.

Full Name: _____

Professional Registration No: _____

REPUBLIC OF SOUTH AFRICA

SOUTH AFRICAN POLICE SERVICE

GALESHEWE SAPS

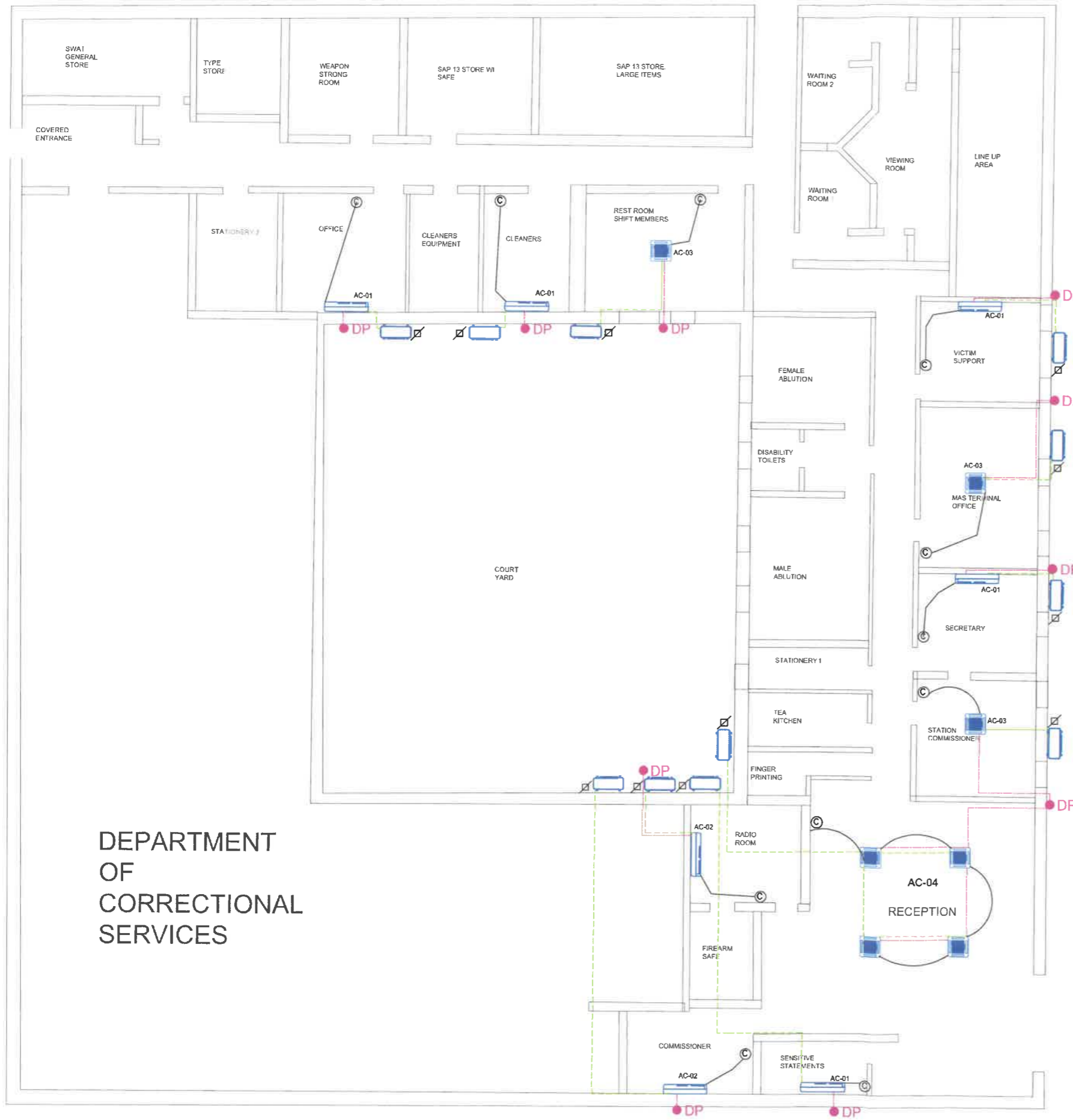
REPLACEMENTS OF AIR CONDITIONERS

MR CONCRETING LAYOUT: BLOCK C

DATE	BY	FOR
2008/07/02	MECHANICAL	MECHANICAL
2008/07/02	MECHANICAL	MECHANICAL
2008/07/02	MECHANICAL	MECHANICAL

MECHANICAL: C

AT



DEPARTMENT OF CORRECTIONAL SERVICES

GALESHEWE SAPS: AIR CONDITIONING

- NOTES:
1. This drawing may only be used for HVAC services.
 2. To prepare his construction/shop drawing, the HVAC sub-contractor must inspect all the architects drawings including structural and other services design drawings pertaining to the works and shall acquaint themselves with the general arrangement of all other services and ensure that in fixing their work it will not obstruct the fixing or future maintenance of other services.
 3. Any un-clarities must be brought to the attention of the mechanical engineer before close of tender.
 4. The HVAC sub-contractor is responsible for correct field dimensions, clearances and heights, quantities, fabrication processes and techniques of construction & co-ordination of his work with that of all other trades providing all devices necessary for safe and satisfactory operation.
 5. Final site measurements must be made by the HVAC sub-contractor before manufacturing or ordering of any equipment.
 6. All air diffusion equipment to be powder coated to an architect approved colour.
 7. All specified equipment must be installed according to manufacturer's specification.
 8. All HVAC equipment to be protected against vibrations by means of anti vibration mountings.
 9. The main contractor shall be responsible for all openings in walls, ceiling, doors for HVAC items of equipment.
 10. Refrigerant piping, control and electrical wiring in ceiling void to run on cable tray - Exposed piping and wiring to run in trunking.
 11. Drawing must be read in conjunction with the relevant HVAC specification and Legend sheet.

Type Mark	Type	Capacity (kW)	Power supply (kW/V/ph/Hz)	Qty
AC-01	Mid-Wall Unit	3.5	1.1/240/1/50	5
AC-02	Mid-Wall Unit	4.5	1.3/240/1/50	2
AC-03	Cassette Unit	5.3	1.5/240/1/50	3
AC-04	Cassette Unit	5.3 * 4	6/240/1/50	1

General Notes

1. This drawing is to be read in conjunction with the relevant specification and the relevant drawings.
2. The contractor shall be responsible for the correct installation and operation of the equipment.
3. The contractor shall be responsible for the correct installation and operation of the equipment.
4. The contractor shall be responsible for the correct installation and operation of the equipment.
5. The contractor shall be responsible for the correct installation and operation of the equipment.
6. The contractor shall be responsible for the correct installation and operation of the equipment.
7. The contractor shall be responsible for the correct installation and operation of the equipment.
8. The contractor shall be responsible for the correct installation and operation of the equipment.
9. The contractor shall be responsible for the correct installation and operation of the equipment.
10. The contractor shall be responsible for the correct installation and operation of the equipment.
11. The contractor shall be responsible for the correct installation and operation of the equipment.

REVISIONS

No.	Description	Date	By
1	FOR DESIGN REVIEW	08/07/20	MECHANICAL
2	FOR DESIGN REVIEW	28/07/20	MECHANICAL

LEGEND:HVAC

	- SINGLE PHASE ISOLATOR (BY OTHER)
	- THREE PHASE ISOLATOR (BY OTHER)
	- DRAIN POINT
	- UNIT CONTROLLER
	- UNDERCUT 20mm
	- BALANCING DAMPER
	- DIFFUSER
	- MIDWALL UNIT
	- OUTDOOR UNIT
	- CONSOLE UNIT
	- FIRE DAMPER
	- FOUR-WAY BLOW CASSETTE UNIT
	- INDUSTRIAL OUTDOOR UNIT
	- REFRIGERANT PIPES
	- CONDENSATE DRAIN PIPE
	- RETURN PIPES
	- SUPPLY PIPES
	- CEILING FAN COIL UNIT

Copyright reserved by the Department of Public Works and Infrastructure

Professional Registration No. _____

SAPS: NORTHERN CAPE: GALESHEWE POLICE STATION- REPLACEMENTS OF AIR CONDITIONERS

REVISIONS

No.	Description	Date	By
1	FOR DESIGN REVIEW	08/07/20	MECHANICAL
2	FOR DESIGN REVIEW	28/07/20	MECHANICAL

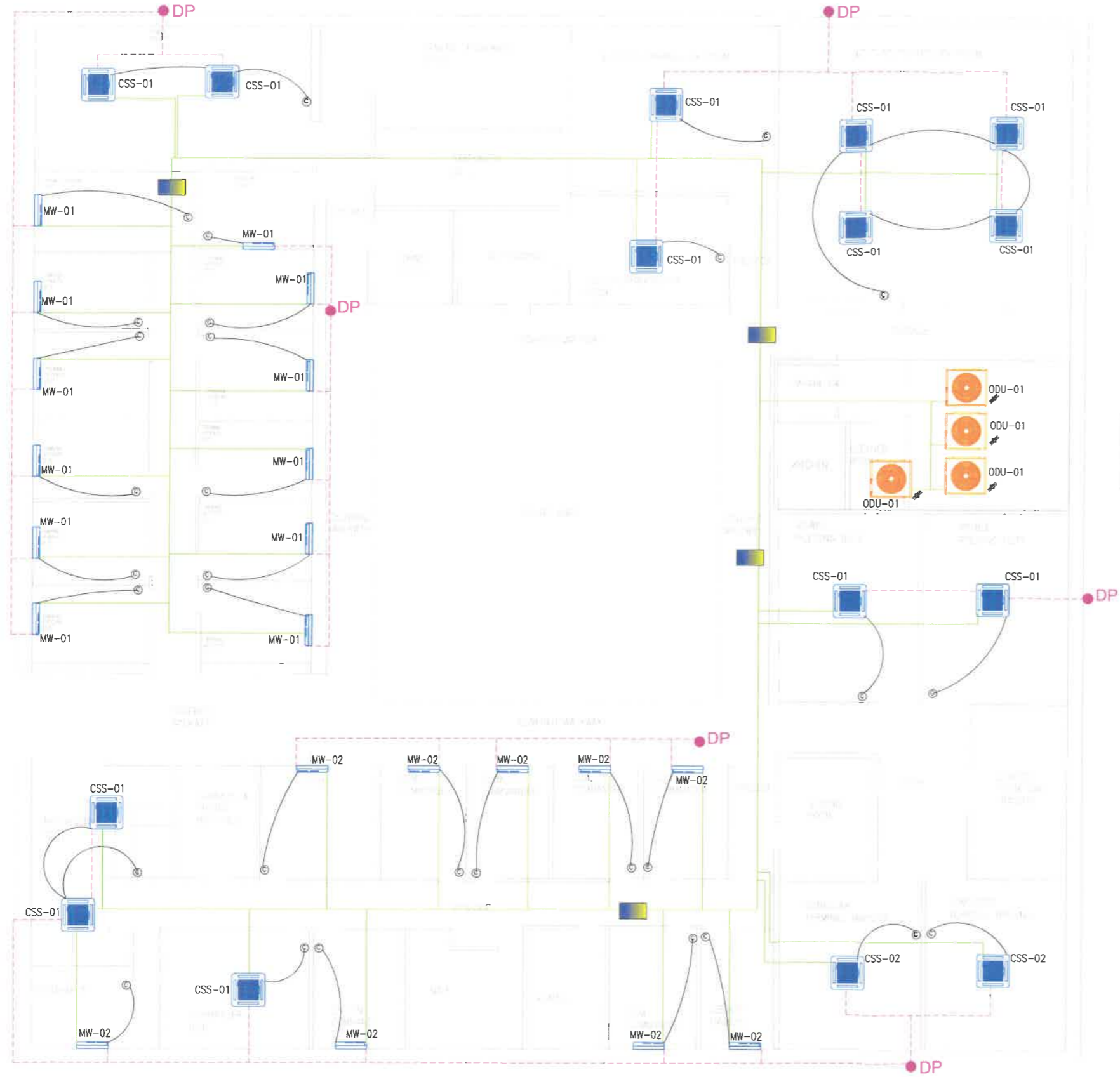
DRAMA ISSUED FOR:

INFORMATION	
PRELIMINARY DESIGN	
DETAILED DESIGN	
TENDER	X
CONSTRUCTION	
AS BUILT	

MECHANICAL

NO.	DATE	BY	APP.
1	08/07/20	MECHANICAL	MECHANICAL
2	28/07/20	MECHANICAL	MECHANICAL

MECHANICAL



- NOTES:**
1. This drawing may only be used for HVAC services.
 2. To prepare his construction/shop drawing, the HVAC sub-contractor must inspect all the architects drawings including structural and other services design drawings pertaining to the works and shall acquaint themselves with the general arrangement of all other services and ensure that in fixing their work it will not obstruct the fixing or future maintenance of other services.
 3. Any un-clarities must be brought to the attention of the mechanical engineer before close of tender.
 4. The HVAC sub-contractor is responsible for correct field dimensions, clearances and heights, quantities, fabrication processes and techniques of construction & co-ordination of his work with that of all other trades providing all devices necessary for safe and satisfactory operation.
 5. Final site measurements must be made by the HVAC sub-contractor before manufacturing or ordering of any equipment.
 6. All air diffusion equipment to be powder coated to an architect approved colour.
 7. All specified equipment must be installed according to manufacturer's specification.
 8. All HVAC equipment to be protected against vibrations by means of anti vibration mountings.
 9. The main contractor shall be responsible for all openings in walls, ceiling, doors for HVAC items of equipment.
 10. Refrigerant piping, control and electrical wiring in ceiling void to run on cable tray - Exposed piping and wiring to run in trunking.
 11. Drawing must be read in conjunction with the relevant HVAC specification and Legend sheet.

Air conditioning Indoor units schedule

Type Mark	Type	Capacity (kW)	Power supply (kW/V/ph/Hz)	Qty
MW-01	Midwall Unit	3.5	1.1/240/1/50	12
MW-02	Midwall Unit	4.5	1.3/240/1/50	9
CSS-01	4-Way Blow Cassette Unit	5.3	1.5/240/1/50	13
CSS-02	4-Way Blow Cassette Unit	7.1	2/240/1/50	2

Outdoor Units schedule

Type Mark	Type	Capacity (kW)	Power supply (V/ph/Hz)	Qty
ODU-01	VRV Heat Recovery Condenser	45,0	440/3/50/60	4

General Notes:

1. This drawing is to be read in conjunction with the general notes to the contract and the relevant specifications.
2. All dimensions are to be taken to the center of the work unless otherwise indicated.
3. The contractor shall be responsible for the correct installation and operation of all equipment.
4. The contractor shall be responsible for the correct installation and operation of all equipment.
5. The contractor shall be responsible for the correct installation and operation of all equipment.
6. The contractor shall be responsible for the correct installation and operation of all equipment.
7. The contractor shall be responsible for the correct installation and operation of all equipment.
8. The contractor shall be responsible for the correct installation and operation of all equipment.
9. The contractor shall be responsible for the correct installation and operation of all equipment.
10. The contractor shall be responsible for the correct installation and operation of all equipment.
11. The contractor shall be responsible for the correct installation and operation of all equipment.
12. The contractor shall be responsible for the correct installation and operation of all equipment.
13. The contractor shall be responsible for the correct installation and operation of all equipment.
14. The contractor shall be responsible for the correct installation and operation of all equipment.
15. The contractor shall be responsible for the correct installation and operation of all equipment.
16. The contractor shall be responsible for the correct installation and operation of all equipment.
17. The contractor shall be responsible for the correct installation and operation of all equipment.
18. The contractor shall be responsible for the correct installation and operation of all equipment.
19. The contractor shall be responsible for the correct installation and operation of all equipment.
20. The contractor shall be responsible for the correct installation and operation of all equipment.

REVISIONS:

REV.	DESCRIPTION	DATE	BY	CHECKED
A	FOR PRELIMINARY DESIGN	10/11/2021	H. CHABALA	
B	FOR DETAILED DESIGN	18/11/2021	H. CHABALA	
C	FOR TENDER	20/11/2021	H. CHABALA	

LEGEND:HVAC

- SINGLE PHASE ISOLATOR (BY OTHER)
- THREE PHASE ISOLATOR (BY OTHER)
- DRAIN POINT
- UNIT CONTROLLER
- UNDERCUT DAMPER
- BALANCING DAMPER
- DIFFUSER
- MIDWALL UNIT
- OUTDOOR UNIT
- CONSOLE UNIT
- FIRE DAMPER
- FOUR-WAY BLOW CASSETTE UNIT
- INDUSTRIAL OUTDOOR UNIT
- REFRIGERANT PIPES
- CONDENSATE DRAIN PIPE
- RETURN PIPES
- SUPPLY PIPES
- BS BOX

DRAWING ISSUED FOR:

INFORMATION	
PRELIMINARY DESIGN	
DETAILED DESIGN	
TENDER	X
CONSTRUCTION	
AS BUILT	



All rights reserved to the Department of Public Works and Infrastructure
Full Name: _____
Professional Registration No: _____
Signature: _____
Date: _____

SOUTH AFRICAN POLICE SERVICE

SAPS NORTHERN CAPE GALESHWE POLICE STATION
REPLACEMENTS OF AP CONDITIONERS

PROJECT: AIR CONDITIONING LAYOUT - B.C.C.D

COMP. NO.	055/17	DATE	10/11/2021
SCALE	AS SHOWN	DRAWN BY	H. CHABALA
DATE	20/11/2021	CHECKED BY	H. CHABALA
DESIGNED BY	H. CHABALA	DATE	10/11/2021
REVISED BY	C	DATE	18/11/2021



- NOTES:
1. This drawing may only be used for HVAC services.
 2. To prepare his construction/shop drawing, the HVAC sub-contractor must inspect all the architects drawings including structural and other services design drawings pertaining to the works and shall acquaint themselves with the general arrangement of all other services and ensure that in fixing their work it will not obstruct the fixing or future maintenance of other services.
 3. Any un-clarities must be brought to the attention of the mechanical engineer before close of tender.
 4. The HVAC sub-contractor is responsible for correct field dimensions, clearances and heights, quantities, fabrication processes and techniques of construction & co-ordination of his work with that of all other trades providing all devices necessary for safe and satisfactory operation.
 5. Final site measurements must be made by the HVAC sub-contractor before manufacturing or ordering of any equipment.
 6. All air diffusion equipment to be powder coated to an architect approved colour.
 7. All specified equipment must be installed according to manufacturer's specification.
 8. All HVAC equipment to be protected against vibrations by means of anti vibration mountings.
 9. The main contractor shall be responsible for all openings in walls, ceiling, doors for HVAC items of equipment.
 10. Refrigerant piping, control and electrical wiring in ceiling void to run on cable tray - Exposed piping and wiring to run in trunking.
 11. Drawing must be read in conjunction with the relevant HVAC specification and Legend sheet.

Type Mark	Type	Capacity (kW)	Power supply (kW/V/ph/Hz)	Qty
MW-01	Midwall Unit	3.5	1.1/240/1/50	8
MW-02	Midwall Unit	4.5	1.3/240/1/50	19
CSS-02	4-Way Blow Cassette Unit	5.3	1.5/240/1/50	2

General Notes

1. This drawing is to be used for construction purposes only.
2. The contractor is responsible for the correct field dimensions, clearances and heights, quantities, fabrication processes and techniques of construction & co-ordination of his work with that of all other trades providing all devices necessary for safe and satisfactory operation.
3. Final site measurements must be made by the HVAC sub-contractor before manufacturing or ordering of any equipment.
4. All air diffusion equipment to be powder coated to an architect approved colour.
5. All specified equipment must be installed according to manufacturer's specification.
6. All HVAC equipment to be protected against vibrations by means of anti vibration mountings.
7. The main contractor shall be responsible for all openings in walls, ceiling, doors for HVAC items of equipment.
8. Refrigerant piping, control and electrical wiring in ceiling void to run on cable tray - Exposed piping and wiring to run in trunking.
9. Drawing must be read in conjunction with the relevant HVAC specification and Legend sheet.

REV	DESCRIPTION	DATE
A	FOR PRELIMINARY DESIGN	15/06/2012
B	FOR DETAILED DESIGN	18/07/2012
C	REVISED FOR TENDER	26/08/2012

LEGEND: HVAC

- SINGLE PHASE ISOLATOR (BY OTHER)
- THREE PHASE ISOLATOR (BY OTHER)
- DRAIN POINT
- UNIT CONTROLLER
- UNDERCUT 20mm
- BALANCING DAMPER
- DIFFUSER
- MIDWALL UNIT
- OUTDOOR UNIT
- CONSOLE UNIT
- FIRE DAMPER
- FOUR-WAY BLOW CASSETTE UNIT
- INDUSTRIAL OUTDOOR UNIT
- REFRIGERANT PIPES
- CONDENSATE DRAIN PIPE
- RETURN PIPES
- SUPPLY PIPES
- RS Box

GALESHEWE SAPS: AIR CONDITIONING

DRAWING ISSUED FOR	
INFORMATION	
PRELIMINARY DESIGN	
DETAILED DESIGN	
TENDR	X
CONSTRUCTION	
AS BUILT	



All rights reserved by the Department of Public Works and Infrastructure.

Full Name: _____

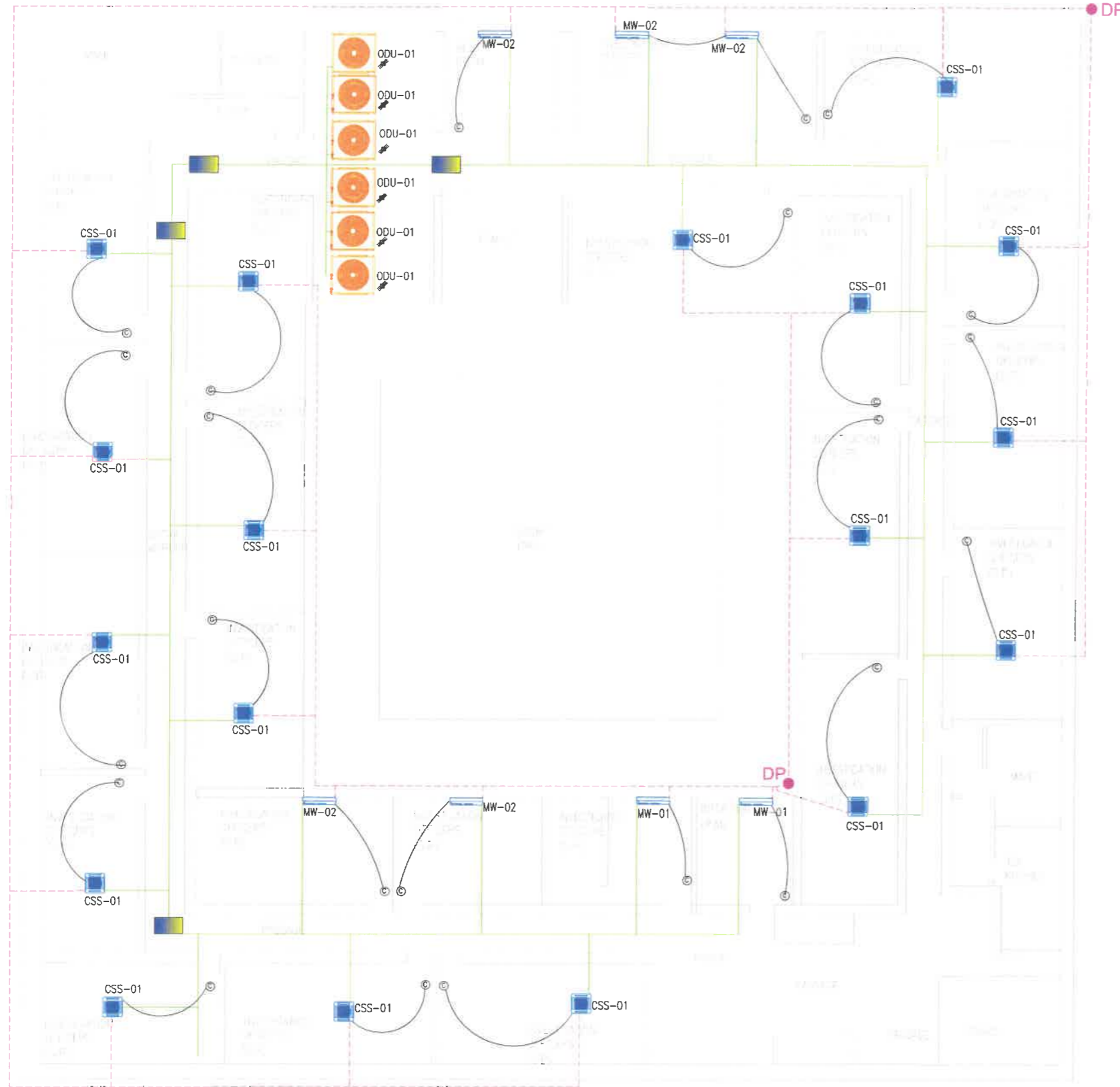
Professional Registration No: _____

SOUTH AFRICAN POLICE SERVICE

REPLACEMENTS OF AIR CONDITIONERS

GALESHEWE SAPS

NO	DATE	BY	FOR
1	15/06/2012	CHABALALA	ISSUED FOR INFORMATION
2	18/07/2012	CHABALALA	ISSUED FOR DETAILED DESIGN
3	26/08/2012	CHABALALA	ISSUED FOR TENDER



- NOTES:
- This drawing may only be used for HVAC services.
 - To prepare his construction/shop drawing, the HVAC sub-contractor must inspect all the architects drawings including structural and other services design drawings pertaining to the works and shall acquaint themselves with the general arrangement of all other services and ensure that in fixing their work it will not obstruct the fixing or future maintenance of other services.
 - Any un-clarities must be brought to the attention of the mechanical engineer before close of tender.
 - The HVAC sub-contractor is responsible for correct field dimensions, clearances and heights, quantities, fabrication processes and techniques of construction & co-ordination of his work with that of all other trades providing all devices necessary for safe and satisfactory operation.
 - Final site measurements must be made by the HVAC sub-contractor before manufacturing or ordering of any equipment.
 - All air diffusion equipment to be powder coated to an architect approved colour.
 - All specified equipment must be installed according to manufacturer's specification.
 - All HVAC equipment to be protected against vibrations by means of anti vibration mountings.
 - The main contractor shall be responsible for all openings in walls, ceiling, doors for HVAC items of equipment.
 - Refrigerant piping, control and electrical wiring in ceiling void to run on cable tray - Exposed piping and wiring to run in trunking.
 - Drawing must be read in conjunction with the relevant HVAC specification and Legend sheet.

Type Mark	Type	Capacity (kW)	Power supply (kWV/ph/Hz)	Qty
MW-01	Midwall Unit	3.5	1.1/240/1/50	2
MW-02	Midwall Unit	4.5	1.3/240/1/50	5
CSS-01	4-Way Blow Cassette Unit	5.3	1.5/240/1/50	18

Type Mark	Type	Capacity (kW)	Power supply (V/ph/Hz)	Qty
ODU-01	VRV Condenser	45,0	440/3/50/60	6

General Notes

- This drawing is for construction purposes and should not be used for any other purpose.
- The contractor shall ensure that all work is done in accordance with the relevant standards and specifications.
- The contractor shall ensure that all work is done in accordance with the relevant standards and specifications.
- The contractor shall ensure that all work is done in accordance with the relevant standards and specifications.
- The contractor shall ensure that all work is done in accordance with the relevant standards and specifications.
- The contractor shall ensure that all work is done in accordance with the relevant standards and specifications.
- The contractor shall ensure that all work is done in accordance with the relevant standards and specifications.
- The contractor shall ensure that all work is done in accordance with the relevant standards and specifications.
- The contractor shall ensure that all work is done in accordance with the relevant standards and specifications.
- The contractor shall ensure that all work is done in accordance with the relevant standards and specifications.
- The contractor shall ensure that all work is done in accordance with the relevant standards and specifications.

NO	DESCRIPTION	DATE	BY
A	FOR PRELIMINARY DESIGN	2024/02/20	MOLONGOR
B	FOR PRELIMINARY DESIGN	2024/02/20	MOLONGOR
C	FOR PRELIMINARY DESIGN	2024/02/20	MOLONGOR

	- SINGLE PHASE ISOLATOR (BY OTHER)
	- THREE PHASE ISOLATOR (BY OTHER)
	- DRAIN POINT
	- UNIT CONTROLLER
	- UNDERCUT 20mm
	- BALANCING DAMPER
	- DIFFUSER
	- MIDWALL UNIT
	- OUTDOOR UNIT
	- CONSOLE UNIT
	- FIRE DAMPER
	- FOUR-WAY BLOW CASSETTE UNIT
	- INDUSTRIAL OUTDOOR UNIT
	- REFRIGERANT PIPES
	- CONDENSATE DRAIN PIPE
	- RETURN PIPES
	- SUPPLY PIPES
	- BS Isot

INFORMATION	
PRELIMINARY DESIGN	
DETAILED DESIGN	
TENDER	X
CONSTRUCTION	
AS BUILT	



All rights reserved by the Department of Public Works and Infrastructure

Project Name: _____

Project Reference Number: _____

SOUTH AFRICAN POLICE SERVICE

Project: _____

Client: _____

Contract No: _____

Project Location: _____

Project Description: _____

Project Status: _____

Project Start Date: _____

Project End Date: _____

Project Manager: _____

Project Engineer: _____

Project Designer: _____

Project Checker: _____

Project Approver: _____

Project Date: _____

Project Version: _____

Project Sheet: _____

Project Total: _____

Project Title: AIR CONDITIONING LAYOUT - B.CCN E 1/F FLOOR

Project No: _____

Project Date: _____

Project Designer: _____

Project Checker: _____

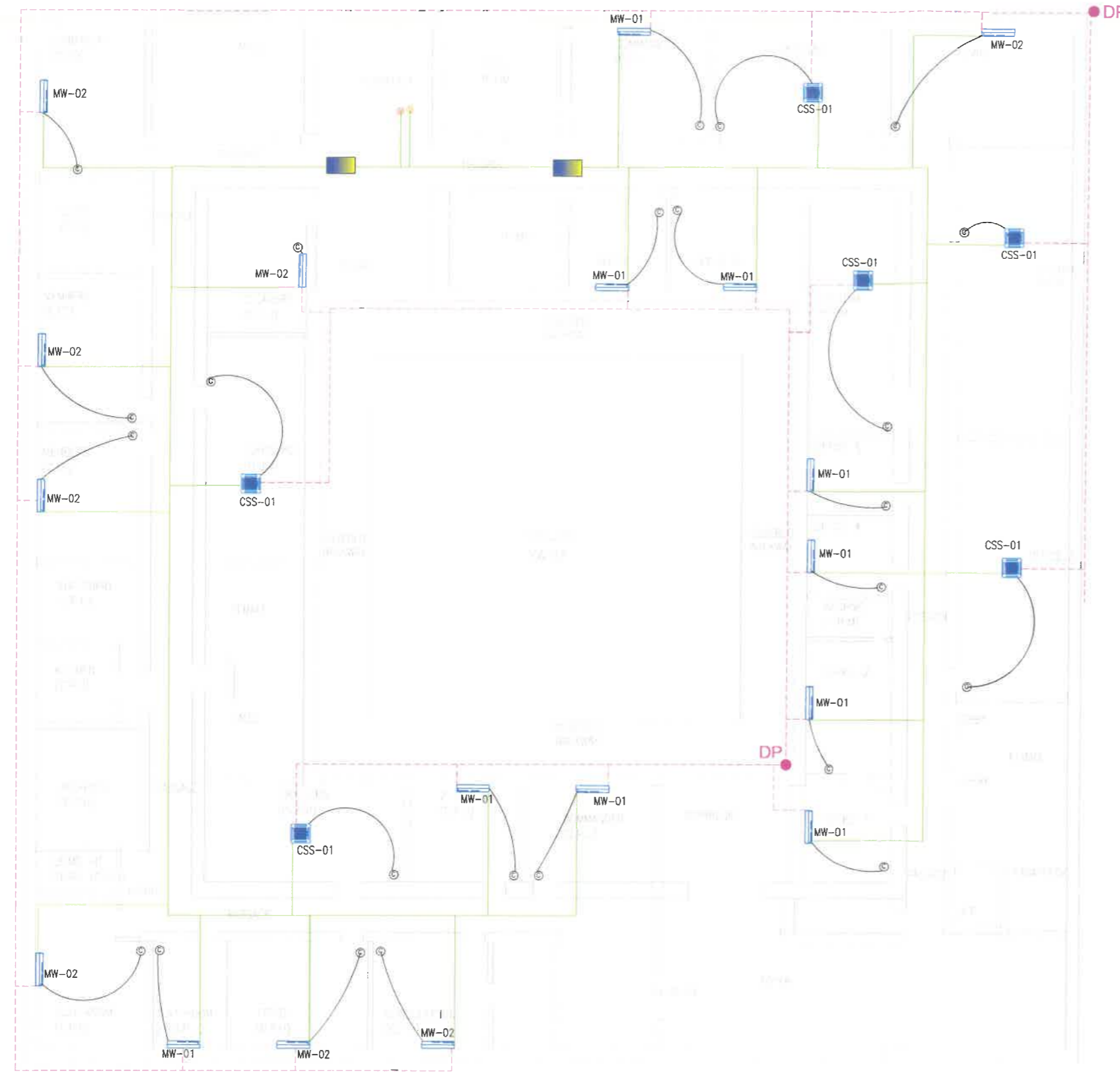
Project Approver: _____

Project Date: _____

Project Version: _____

Project Sheet: _____

Project Total: _____



- NOTES:**
- This drawing may only be used for HVAC services.
 - To prepare his construction/shop drawing, the HVAC sub-contractor must inspect all the architects drawings including structural and other services design drawings pertaining to the works and shall acquaint themselves with the general arrangement of all other services and ensure that in fixing their work it will not obstruct the fixing or future maintenance of other services.
 - Any un-clarities must be brought to the attention of the mechanical engineer before close of tender.
 - The HVAC sub-contractor is responsible for correct field dimensions, clearances and heights, quantities, fabrication processes and techniques of construction & co-ordination of his work with that of all other trades providing all devices necessary for safe and satisfactory operation.
 - Final site measurements must be made by the HVAC sub-contractor before manufacturing or ordering of any equipment.
 - All air diffusion equipment to be powder coated to an architect approved colour.
 - All specified equipment must be installed according to manufacturer's specification.
 - All HVAC equipment to be protected against vibrations by means of anti vibration mountings.
 - The main contractor shall be responsible for all openings in walls, ceiling, doors for HVAC items of equipment.
 - Refrigerant piping, control and electrical wiring in ceiling void to run on cable tray - Exposed piping and wiring to run in trunking.
 - Drawing must be read in conjunction with the relevant HVAC specification and Legend sheet.

Type Mark	Type	Capacity (kW)	Power supply (kW/V/ph/Hz)	Qty
MW-01	Midwall Unit	3.5	1.1/240/1/50	10
MW-02	Midwall Unit	4.5	1.3/240/1/50	8
CSS-01	4-Way Blow Cassette Unit	5.3	1.5/240/1/50	6

General Notes:

- This drawing is to be read in conjunction with the relevant specifications and the client's program of requirements for the project.
- The contractor shall be responsible for the correct interpretation and application of the drawing.
- The contractor shall be responsible for the correct interpretation and application of the drawing.
- The contractor shall be responsible for the correct interpretation and application of the drawing.
- The contractor shall be responsible for the correct interpretation and application of the drawing.
- The contractor shall be responsible for the correct interpretation and application of the drawing.
- The contractor shall be responsible for the correct interpretation and application of the drawing.
- The contractor shall be responsible for the correct interpretation and application of the drawing.
- The contractor shall be responsible for the correct interpretation and application of the drawing.
- The contractor shall be responsible for the correct interpretation and application of the drawing.
- The contractor shall be responsible for the correct interpretation and application of the drawing.
- The contractor shall be responsible for the correct interpretation and application of the drawing.
- The contractor shall be responsible for the correct interpretation and application of the drawing.
- The contractor shall be responsible for the correct interpretation and application of the drawing.
- The contractor shall be responsible for the correct interpretation and application of the drawing.
- The contractor shall be responsible for the correct interpretation and application of the drawing.

REVISIONS

No	Description	Date	By
1	FOR PRELIMINARY DESIGN	2024/02/12	MADONISIA K
2	FOR PRELIMINARY DESIGN	2024/02/12	MADONISIA K
3	FOR PRELIMINARY DESIGN	2024/02/12	MADONISIA K

LEGEND:HVAC

	- SINGLE PHASE ISOLATOR (BY OTHER)
	- THREE PHASE ISOLATOR (BY OTHER)
	- DRAIN POINT
	- UNIT CONTROLLER
	- UNDERCUT 20mm
	- BALANCING DAMPER
	- DIFFUSER
	- MIDWALL UNIT
	- OUTDOOR UNIT
	- CONSOLE UNIT
	- FIRE DAMPER
	- FOUR-WAY BLOW CASSETTE UNIT
	- INDUSTRIAL OUTDOOR UNIT
	- REFRIGERANT PIPES
	- CONDENSATE DRAIN PIPE
	- RETURN PIPES
	- SUPPLY PIPES
	- SS Box

DRAWING ISSUED FOR:

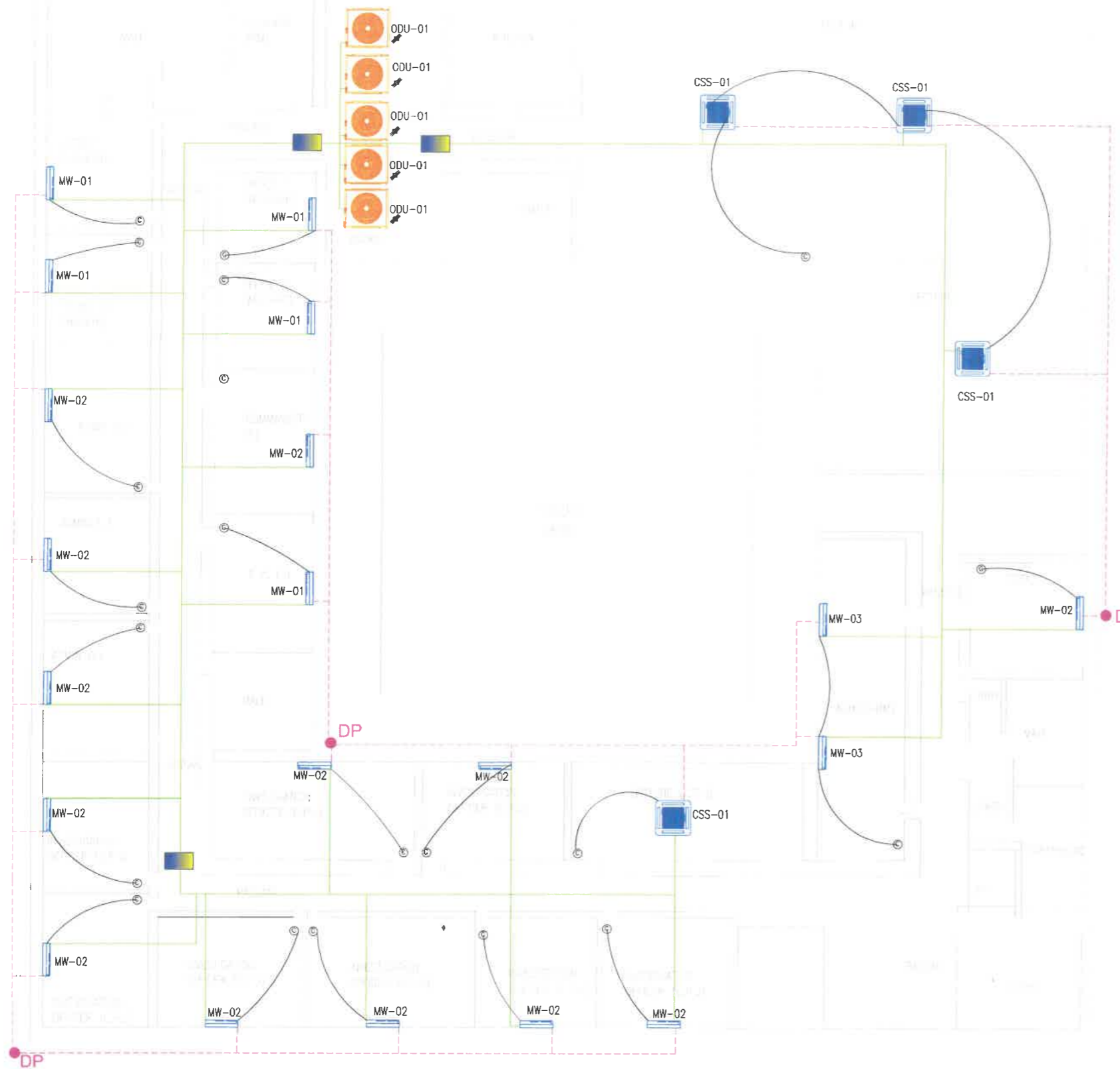
INFORMATION	
PRELIMINARY DESIGN	
DETAIL DESIGN	
TENDER	X
CONSTRUCTION	
AS BUILT	



Drawings issued by the Department of Public Works and Infrastructure, South Africa



PROJECT NAME	SAPS NORTHERN CAPE GALLERY/ME POLICE STATION		
PROJECT NUMBER	REPLACEMENTS OF AIR CONDENSERS		
CLIENT	SAPS		
DESIGNER	MADONISIA K		
CHECKED BY	MADONISIA K		
DATE	2024/02/12		
SCALE	AS SHOWN		
PROJECT LOCATION	SAPS NORTHERN CAPE GALLERY/ME POLICE STATION		
PROJECT NUMBER	REPLACEMENTS OF AIR CONDENSERS		
CLIENT	SAPS		
DESIGNER	MADONISIA K		
CHECKED BY	MADONISIA K		
DATE	2024/02/12		
SCALE	AS SHOWN		



- NOTES:
1. This drawing may only be used for HVAC services.
 2. To prepare his construction/shop drawing, the HVAC sub-contractor must inspect all the architects drawings including structural and other services design drawings pertaining to the works and shall acquaint themselves with the general arrangement of all other services and ensure that in fixing their work it will not obstruct the fixing or future maintenance of other services.
 3. Any un-clarities must be brought to the attention of the mechanical engineer before close of tender.
 4. The HVAC sub-contractor is responsible for correct field dimensions, clearances and heights, quantities, fabrication processes and techniques of construction & co-ordination of his work with that of all other trades providing all devices necessary for safe and satisfactory operation.
 5. Final site measurements must be made by the HVAC sub-contractor before manufacturing or ordering of any equipment.
 6. All air diffusion equipment to be powder coated to an architect approved colour.
 7. All specified equipment must be installed according to manufacturer's specification.
 8. All HVAC equipment to be protected against vibrations by means of anti vibration mountings.
 9. The main contractor shall be responsible for all openings in walls, ceiling, doors for HVAC items of equipment.
 10. Refrigerant piping, control and electrical wiring in ceiling void to run on cable tray - Exposed piping and wiring to run in trunking.
 11. Drawing must be read in conjunction with the relevant HVAC specification and Legend sheet.

Type Mark	Type	Capacity (kW)	Power supply (kW/V/ph/Hz)	Qty
MW-01	Midwall Unit	3.5	1.1/240/1/50	5
MW-02	Midwall Unit	4.5	1.3/240/1/50	13
MW-03	Midwall Unit	5.0	1.5/240/1/50	2
CSS-01	4-Way Blow Cassette Unit	5.3	1.5/240/1/50	4

Type Mark	Type	Capacity (kW)	Power supply (V/ph/Hz)	Qty
ODU-01	VRV Heat Recovery Condenser	45.0	440/3/50/60	5

General Notes

1. This drawing is for the use of the contractor only and is not to be used for any other purpose.
2. The contractor shall be responsible for the correct interpretation of the drawing and shall ensure that the work is carried out in accordance with the drawing and the relevant specifications.
3. The contractor shall be responsible for the correct interpretation of the drawing and shall ensure that the work is carried out in accordance with the drawing and the relevant specifications.
4. The contractor shall be responsible for the correct interpretation of the drawing and shall ensure that the work is carried out in accordance with the drawing and the relevant specifications.
5. The contractor shall be responsible for the correct interpretation of the drawing and shall ensure that the work is carried out in accordance with the drawing and the relevant specifications.
6. The contractor shall be responsible for the correct interpretation of the drawing and shall ensure that the work is carried out in accordance with the drawing and the relevant specifications.
7. The contractor shall be responsible for the correct interpretation of the drawing and shall ensure that the work is carried out in accordance with the drawing and the relevant specifications.
8. The contractor shall be responsible for the correct interpretation of the drawing and shall ensure that the work is carried out in accordance with the drawing and the relevant specifications.
9. The contractor shall be responsible for the correct interpretation of the drawing and shall ensure that the work is carried out in accordance with the drawing and the relevant specifications.
10. The contractor shall be responsible for the correct interpretation of the drawing and shall ensure that the work is carried out in accordance with the drawing and the relevant specifications.
11. The contractor shall be responsible for the correct interpretation of the drawing and shall ensure that the work is carried out in accordance with the drawing and the relevant specifications.

REVISIONS

No.	Description	Date	By
A	FOR PRELIMINARY DESIGN	2024/02/22	MOLAMU DR.
B	FOR PRELIMINARY DESIGN	2024/02/22	MOLAMU DR.
C	FOR PRELIMINARY DESIGN	2024/02/22	MOLAMU DR.

LEGEND:HVAC

- SINGLE PHASE ISOLATOR (BY OTHER)
- THREE PHASE ISOLATOR (BY OTHER)
- DRAIN POINT
- UNIT CONTROLLER
- UNDERCUT 20mm
- BALANCING DAMPER
- DIFFUSER
- MIDWALL UNIT
- OUTDOOR UNIT
- CONSOLE UNIT
- FUSE DAMPER
- FOUR-WAY BLOW CASSETTE UNIT
- INDUSTRIAL OUTDOOR UNIT
- REFRIGERANT PIPES
- CONDENSATE DRAIN PIPE
- RETURN PIPES
- SUPPLY PIPES
- BS Box

DRAWING ISSUED FOR

INFORMATION	
PRELIMINARY DESIGN	
DETAILS DESIGN	
TENDER	X
CONSTRUCTION	
AS BUILT	



All rights reserved to the Department of Public Works and Infrastructure.

Public Works & Infrastructure
Department
Water, Storm and Flood Control, and
Municipal Engineering Services

SOUTH AFRICAN POLICE SERVICE

DRIVING UNIT 3

PROJECT INFORMATION

PROJECT NO: 2024/02/22

PROJECT NAME: SAPS NORTHERN CAPE GALESHEWE POLICE STATION REPLACEMENTS OF AIR CONDITIONERS

PROJECT LOCATION: 111

PROJECT DESCRIPTION: MR CONDITIONING LAYOUT - B.L.C ON E 111 FLOOR

CLIENT INFORMATION

NAME	CONTACT NO	EMAIL	DESIGNER
MR. M. M. M.	055417	m.m.m@wipr.gov.za	MOLAMU DR.
MR. M. M. M.	2024/02/22	m.m.m@wipr.gov.za	MOLAMU DR.
MR. M. M. M.		m.m.m@wipr.gov.za	MOLAMU DR.

DESIGNER INFORMATION

NAME	CONTACT NO	EMAIL	DESIGNER
MR. M. M. M.		m.m.m@wipr.gov.za	MOLAMU DR.
MR. M. M. M.		m.m.m@wipr.gov.za	MOLAMU DR.
MR. M. M. M.		m.m.m@wipr.gov.za	MOLAMU DR.