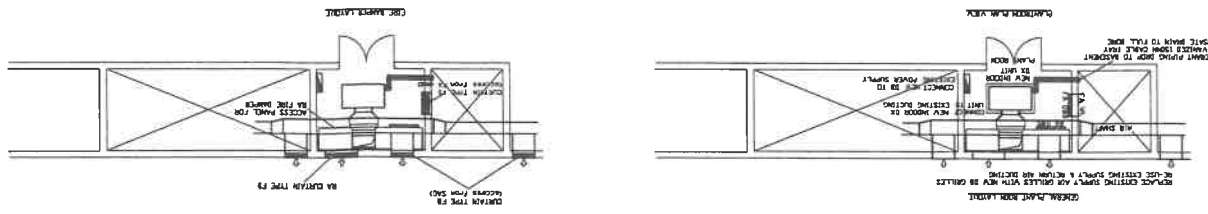
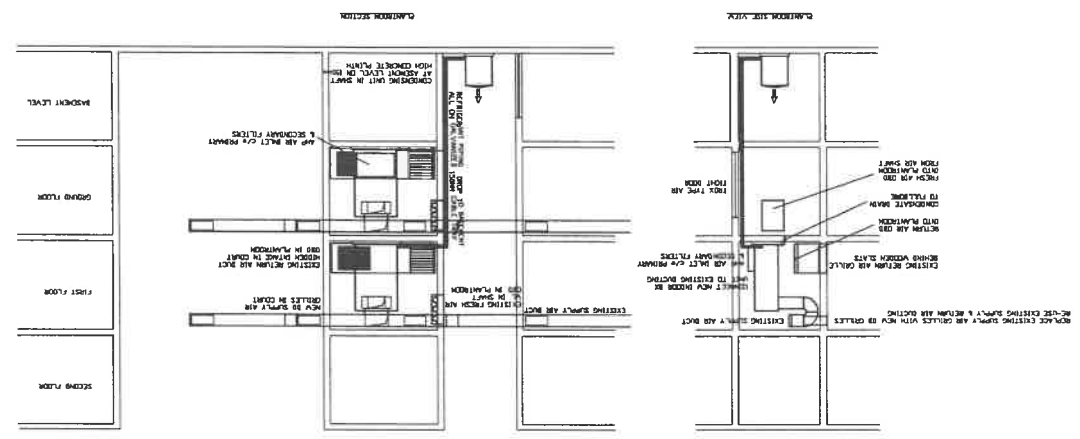
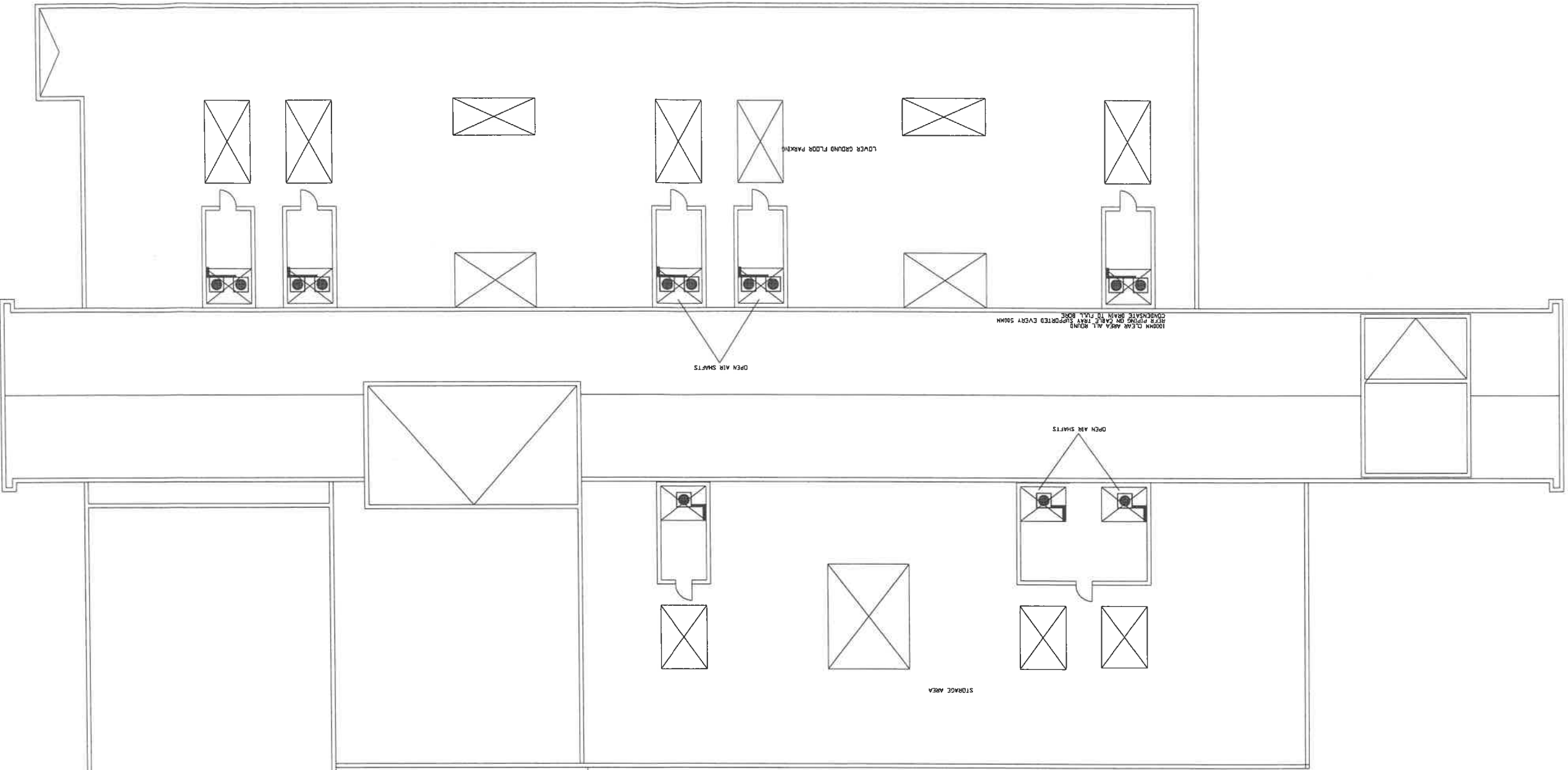
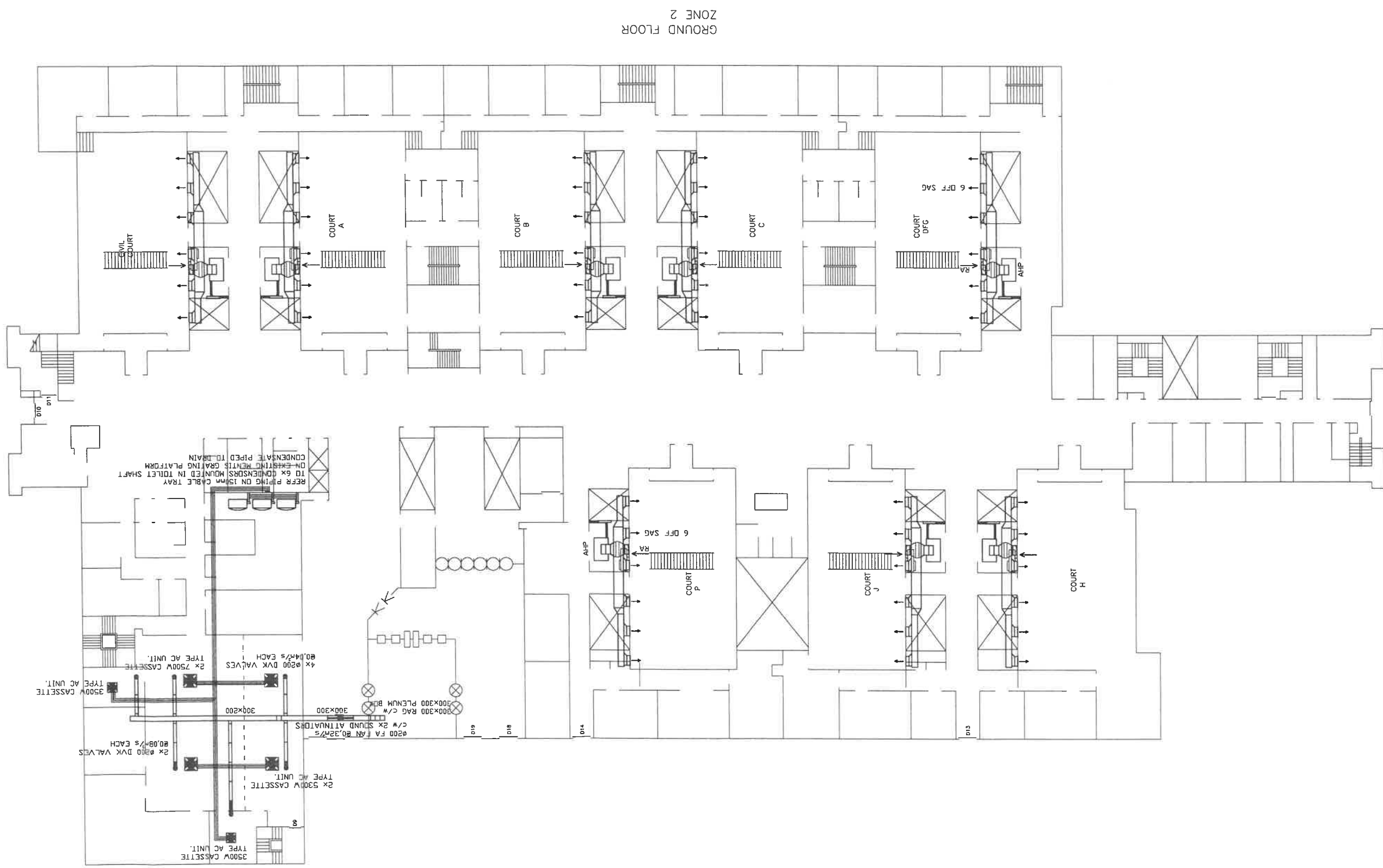


DATE	04.02.2022	1:125	AM	V.F.	APPROVED
SCALE	DATE	SCALE	DATE	SCALE	DATE
REVISION	DRAWING NUMBER KIM2-M1-01				
DRAWING LOWER GROUND FLOOR INVERTER CONDENSOR LAYOUT					
PROJECT REPAIR AND RENOVATION KIMBERLEY MAGISTRATES COURT					
CONSULTING ENGINEERS DREWETT, HUBBLE & POKORNY					
4 HORDO PARK, WILKINSON ROAD, SEVENHILLS, WILKINSON 9459					
P.O. BOX 47270, PARKWAY 2121					
TELEPHONE 0811 112 337 FAX 0811 112 334					
E-MAIL dhp@dhpa.co.za					
DHP inc.					
CONSULTING ENGINEERS					
REPUBLIC OF SOUTH AFRICA					
DIRECTOR GENERAL					
Public Works					
REV	DATE	DESCRIPTION	DHW:CD		



DATE	04.02.2022	TIME	11:25 AM	SCALE		CHECKED		APPROVED	
PROJECT	REPAIR AND RENOVATION KIMBERLEY MAGISTRATES COURT								
DRAWING	GROUND FLOOR HVAC LAYOUT								
DRAWING NUMBER	KIM2-M1-02								
REVISION	-								
<p><b>DHP inc.</b> CONSULTING ENGINEERS 4 HYDRO ROAD, MARKET BOWL, SEVENTH FLOOR, WILLOW 9499 P.O. BOX 47270, FARMBOYS 2121 TELEPHONE 0861 112 227 FAX 0861 112 224 E-mail dhpinquiry@co.za</p>									
<p>Department of Public Works PUBLIC WORKS REPUBLIC OF SOUTH AFRICA DIRECTOR-GENERAL</p>									
REV	DATE	DESCRIPTION							
DN/CD									



GROUND FLOOR  
ZONE 2

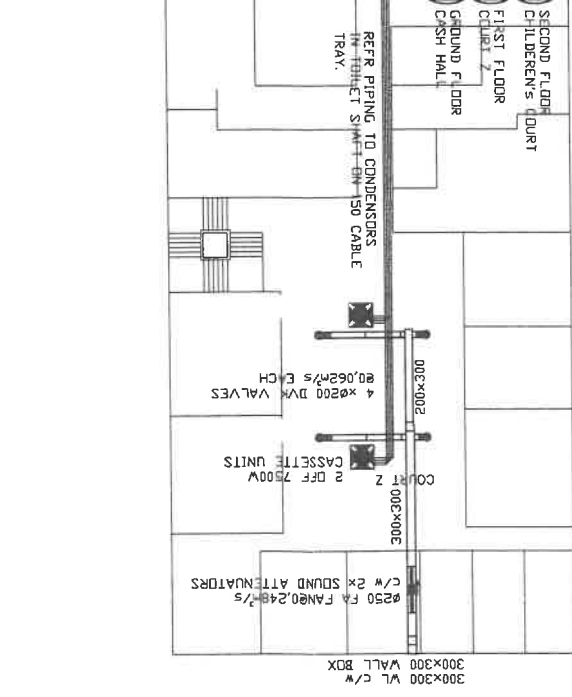
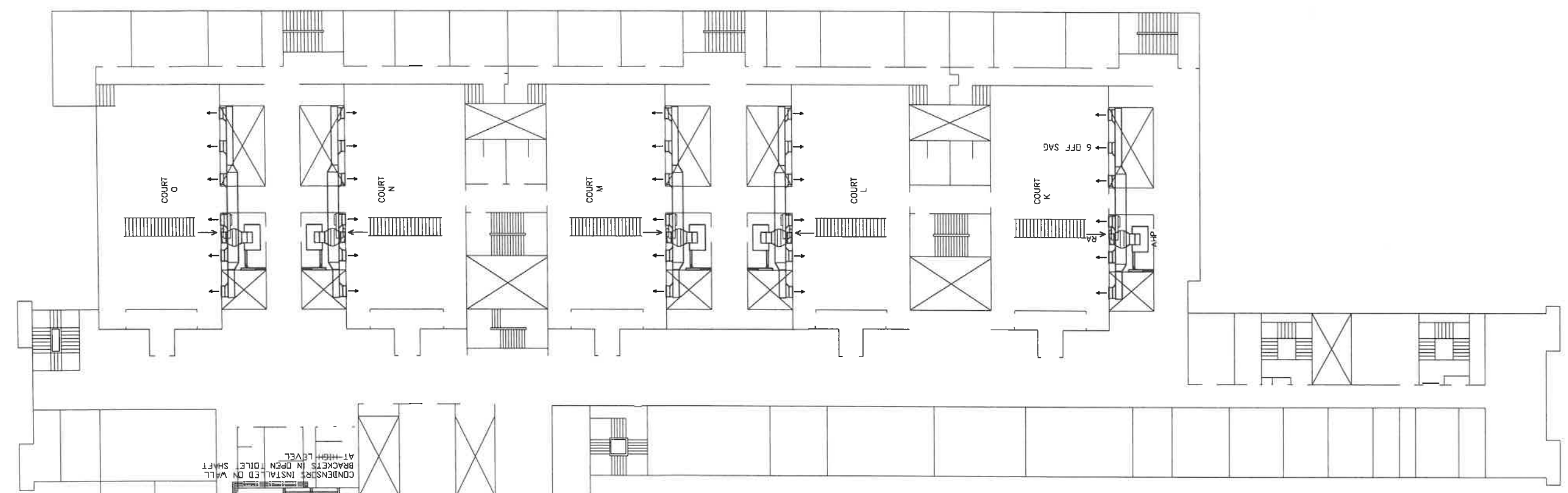
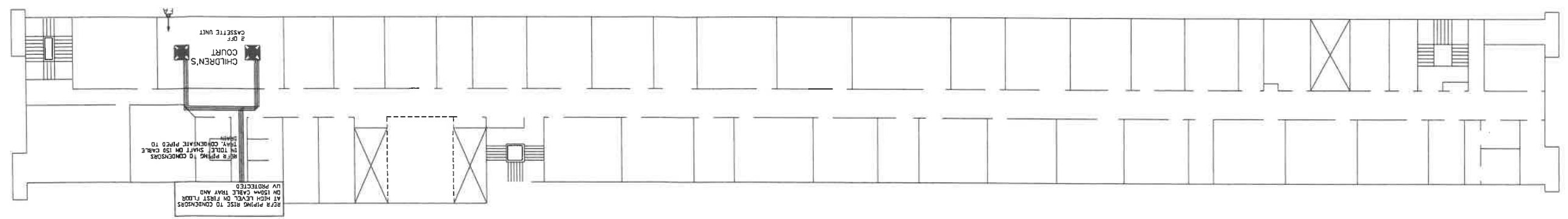
DATE: 04.02.2022  
 SCALE: 1:125  
 DRAWN: [Name]  
 CHECKED: [Name]  
 APPROVED: [Name]

REVISION: KIMZ-M1-03

PROJECT: REPAIR AND RENOVATION KIMBERLEY MAGISTRATES COURT  
 DRAWING: FIRST FLOOR HVAC LAYOUT

CONSULTING ENGINEERS: DREWITT, HUBBLE & POKORNY  
 4 HAYDO PARK, WILDER ROAD, SEVENHILLS WILDER 9459  
 P.O. BOX 47270 FARMBOURG 2121  
 TELEPHONE 0861 112 327 FAX 0861 112 324  
 E-MAIL: dhp@dhpa.co.za

**DHP inc.**  
 DIRECTOR GENERAL  
 REPUBLIC OF SOUTH AFRICA  
 Public Works



**SCHEDULE 1: DETAILS AND COINTEGRATING AVE. FRIODGE PIPE NO. OFF-FLOOR TYPE OF UNIT, CAPACITY MW FOR LENGTHS (m to indoor unit)**

ITEM	TYPE OF UNIT	CAPACITY MW FOR LENGTHS (m to indoor unit)	AVE. FRIODGE PIPE NO. OFF-FLOOR
DX1	casette 1	5.3	4x28
DX2	casette 2	5.3	4x28
DX3	casette 3	7.0	4x28

**SCHEDULE 2: SPLIT DX AC INVERTER UNITS WITH LOW AMBIENT CONTROL**

FAN	ATTEN.	SERVIC	NO. OF Y	PA	NOTES
Expel	Ap	NA	1	0.10	FA
100	ø	100	ø	100	ø
100	ø	100	ø	100	ø

**SCHEDULE 3: SAG, DVM, DMC, WL & FD**

TYPE	NO.	AIR	NECK	SIZE	MM	NOTES
SAG1	78	Ø233	400x250	Ø233	400x250	(measure on gdn, noise level NC 30, pressure drop < 20Pa)
DVM	10	Ø200	200 dia	Ø200	200 dia	Supply air disc valve steel for fresh air supply to kitchen
WL	1	Ø32	400x300	Ø32	400x300	VL: Insulation box for duct connection
FD1	1	Ø233	400x250	Ø233	400x250	F: into duct before supply air grille
FD2	13	Ø233	400x250	Ø233	400x250	F: into duct before supply air grille
FD3	13	Ø233	400x250	Ø233	400x250	F: into duct before supply air grille

**SCHEDULE 4: FANS, ATTENUATORS**

ALPH	SERVICE	SIZE	TYPE	NO.	REMARKS
1	AHJ13	140	EXHAUST	1	1
2	EXHAUST	140	EXHAUST	1	2

**General Conditions:**  
 1.1 Volume and pressure @ 1250mm  
 1.2 Minimum static air pressure  
 1.3 AHU's are vertical inductor units used to fill existing space with connections to VFA ducting  
 1.4 AHU's shall be mounted on a reinforced concrete slab (minimum 150mm) or on a steel deck  
 1.5 AHU's shall be mounted on a reinforced concrete slab (minimum 150mm) or on a steel deck  
 1.6 AHU's shall be mounted on a reinforced concrete slab (minimum 150mm) or on a steel deck  
 1.7 AHU's shall be mounted on a reinforced concrete slab (minimum 150mm) or on a steel deck  
 1.8 AHU's shall be mounted on a reinforced concrete slab (minimum 150mm) or on a steel deck  
 1.9 AHU's shall be mounted on a reinforced concrete slab (minimum 150mm) or on a steel deck  
 1.10 AHU's shall be mounted on a reinforced concrete slab (minimum 150mm) or on a steel deck  
 1.11 AHU's shall be mounted on a reinforced concrete slab (minimum 150mm) or on a steel deck  
 1.12 AHU's shall be mounted on a reinforced concrete slab (minimum 150mm) or on a steel deck  
 1.13 AHU's shall be mounted on a reinforced concrete slab (minimum 150mm) or on a steel deck  
 1.14 AHU's shall be mounted on a reinforced concrete slab (minimum 150mm) or on a steel deck  
 1.15 AHU's shall be mounted on a reinforced concrete slab (minimum 150mm) or on a steel deck  
 1.16 AHU's shall be mounted on a reinforced concrete slab (minimum 150mm) or on a steel deck  
 1.17 AHU's shall be mounted on a reinforced concrete slab (minimum 150mm) or on a steel deck  
 1.18 AHU's shall be mounted on a reinforced concrete slab (minimum 150mm) or on a steel deck