





**GENERAL NOTES**

- ALL ELECTRICAL WORK MUST BE IN ACCORDANCE WITH THE SANS 10182-1 AND 10182-2.
- THE CONTRACTOR SHALL BE RESPONSIBLE FOR THE PROTECTION OF ALL EXISTING SERVICES AND STRUCTURES.
- THE CONTRACTOR SHALL BE RESPONSIBLE FOR THE PROTECTION OF ALL EXISTING SERVICES AND STRUCTURES.
- THE CONTRACTOR SHALL BE RESPONSIBLE FOR THE PROTECTION OF ALL EXISTING SERVICES AND STRUCTURES.

REVISIONS		D.P.W.
NO.	DATE	AMENDMENT
1	04.02.2019	FOR TENDER
2	05.12.19	UPDATED FOR TENDER

J.S. J.C.	
Copyright vests in the Department of Public Works	
special drawings	
created and approved by the Department of Public Works	
name: _____ date: _____ professional registration no.: _____	

contract reference: EE10414-K/01 42-03-04 -T0 Admin.dwg A 1



contractor:  
 NIKAYELED CONSULTING PTY LTD  
 1st Floor 560  
 1st Floor 560  
 Tel: +27 (0) 11 752447  
 Fax: +27 (0) 11 752447

author: BARTSCH  
 discipline: ELECTRICAL  
 service:

WESTVILLE DCs - PROVISION OF  
 FACILITIES FOR THE DISABLED  
 DURBAN MEDIUM PRISON HARRY  
 GWALA ROAD, WESTVILLE, 3829

WCS number: WCS 049089  
 drawing title: ADMIN BLOCK ELECTRICAL INSTALLATION

revision:  
 no. 3313/2/001  
 scale: 1:50  
 date: 04.02.2019  
 checked: M. HILKNER  
 approved: J. GULESPE  
 drawn: J. GULESPE

EE10414/K/04

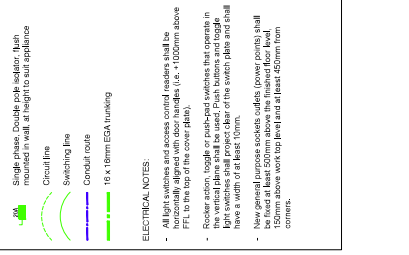
**LEGEND & NOTES**

Electrical Legend:

- 1. Round Bulbhead Luminaire with recessed above mounted 2 x 250 AFPL
- 2. Round Bulbhead Luminaire with recessed above mounted 2 x 250 AFPL
- 3. Round Bulbhead Luminaire with recessed above mounted 2 x 250 AFPL
- 4. Round Bulbhead Luminaire with recessed above mounted 2 x 250 AFPL
- 5. Round Bulbhead Luminaire with recessed above mounted 2 x 250 AFPL
- 6. Round Bulbhead Luminaire with recessed above mounted 2 x 250 AFPL
- 7. Round Bulbhead Luminaire with recessed above mounted 2 x 250 AFPL
- 8. Round Bulbhead Luminaire with recessed above mounted 2 x 250 AFPL
- 9. Round Bulbhead Luminaire with recessed above mounted 2 x 250 AFPL
- 10. Round Bulbhead Luminaire with recessed above mounted 2 x 250 AFPL
- 11. Round Bulbhead Luminaire with recessed above mounted 2 x 250 AFPL
- 12. Round Bulbhead Luminaire with recessed above mounted 2 x 250 AFPL
- 13. Round Bulbhead Luminaire with recessed above mounted 2 x 250 AFPL
- 14. Round Bulbhead Luminaire with recessed above mounted 2 x 250 AFPL
- 15. Round Bulbhead Luminaire with recessed above mounted 2 x 250 AFPL
- 16. Round Bulbhead Luminaire with recessed above mounted 2 x 250 AFPL
- 17. Round Bulbhead Luminaire with recessed above mounted 2 x 250 AFPL
- 18. Round Bulbhead Luminaire with recessed above mounted 2 x 250 AFPL
- 19. Round Bulbhead Luminaire with recessed above mounted 2 x 250 AFPL
- 20. Round Bulbhead Luminaire with recessed above mounted 2 x 250 AFPL
- 21. Round Bulbhead Luminaire with recessed above mounted 2 x 250 AFPL
- 22. Round Bulbhead Luminaire with recessed above mounted 2 x 250 AFPL
- 23. Round Bulbhead Luminaire with recessed above mounted 2 x 250 AFPL
- 24. Round Bulbhead Luminaire with recessed above mounted 2 x 250 AFPL
- 25. Round Bulbhead Luminaire with recessed above mounted 2 x 250 AFPL
- 26. Round Bulbhead Luminaire with recessed above mounted 2 x 250 AFPL
- 27. Round Bulbhead Luminaire with recessed above mounted 2 x 250 AFPL
- 28. Round Bulbhead Luminaire with recessed above mounted 2 x 250 AFPL
- 29. Round Bulbhead Luminaire with recessed above mounted 2 x 250 AFPL
- 30. Round Bulbhead Luminaire with recessed above mounted 2 x 250 AFPL
- 31. Round Bulbhead Luminaire with recessed above mounted 2 x 250 AFPL
- 32. Round Bulbhead Luminaire with recessed above mounted 2 x 250 AFPL
- 33. Round Bulbhead Luminaire with recessed above mounted 2 x 250 AFPL
- 34. Round Bulbhead Luminaire with recessed above mounted 2 x 250 AFPL
- 35. Round Bulbhead Luminaire with recessed above mounted 2 x 250 AFPL
- 36. Round Bulbhead Luminaire with recessed above mounted 2 x 250 AFPL
- 37. Round Bulbhead Luminaire with recessed above mounted 2 x 250 AFPL
- 38. Round Bulbhead Luminaire with recessed above mounted 2 x 250 AFPL
- 39. Round Bulbhead Luminaire with recessed above mounted 2 x 250 AFPL
- 40. Round Bulbhead Luminaire with recessed above mounted 2 x 250 AFPL
- 41. Round Bulbhead Luminaire with recessed above mounted 2 x 250 AFPL
- 42. Round Bulbhead Luminaire with recessed above mounted 2 x 250 AFPL
- 43. Round Bulbhead Luminaire with recessed above mounted 2 x 250 AFPL
- 44. Round Bulbhead Luminaire with recessed above mounted 2 x 250 AFPL
- 45. Round Bulbhead Luminaire with recessed above mounted 2 x 250 AFPL
- 46. Round Bulbhead Luminaire with recessed above mounted 2 x 250 AFPL
- 47. Round Bulbhead Luminaire with recessed above mounted 2 x 250 AFPL
- 48. Round Bulbhead Luminaire with recessed above mounted 2 x 250 AFPL
- 49. Round Bulbhead Luminaire with recessed above mounted 2 x 250 AFPL
- 50. Round Bulbhead Luminaire with recessed above mounted 2 x 250 AFPL
- 51. Round Bulbhead Luminaire with recessed above mounted 2 x 250 AFPL
- 52. Round Bulbhead Luminaire with recessed above mounted 2 x 250 AFPL
- 53. Round Bulbhead Luminaire with recessed above mounted 2 x 250 AFPL
- 54. Round Bulbhead Luminaire with recessed above mounted 2 x 250 AFPL
- 55. Round Bulbhead Luminaire with recessed above mounted 2 x 250 AFPL
- 56. Round Bulbhead Luminaire with recessed above mounted 2 x 250 AFPL
- 57. Round Bulbhead Luminaire with recessed above mounted 2 x 250 AFPL
- 58. Round Bulbhead Luminaire with recessed above mounted 2 x 250 AFPL
- 59. Round Bulbhead Luminaire with recessed above mounted 2 x 250 AFPL
- 60. Round Bulbhead Luminaire with recessed above mounted 2 x 250 AFPL
- 61. Round Bulbhead Luminaire with recessed above mounted 2 x 250 AFPL
- 62. Round Bulbhead Luminaire with recessed above mounted 2 x 250 AFPL
- 63. Round Bulbhead Luminaire with recessed above mounted 2 x 250 AFPL
- 64. Round Bulbhead Luminaire with recessed above mounted 2 x 250 AFPL
- 65. Round Bulbhead Luminaire with recessed above mounted 2 x 250 AFPL
- 66. Round Bulbhead Luminaire with recessed above mounted 2 x 250 AFPL
- 67. Round Bulbhead Luminaire with recessed above mounted 2 x 250 AFPL
- 68. Round Bulbhead Luminaire with recessed above mounted 2 x 250 AFPL
- 69. Round Bulbhead Luminaire with recessed above mounted 2 x 250 AFPL
- 70. Round Bulbhead Luminaire with recessed above mounted 2 x 250 AFPL
- 71. Round Bulbhead Luminaire with recessed above mounted 2 x 250 AFPL
- 72. Round Bulbhead Luminaire with recessed above mounted 2 x 250 AFPL
- 73. Round Bulbhead Luminaire with recessed above mounted 2 x 250 AFPL
- 74. Round Bulbhead Luminaire with recessed above mounted 2 x 250 AFPL
- 75. Round Bulbhead Luminaire with recessed above mounted 2 x 250 AFPL
- 76. Round Bulbhead Luminaire with recessed above mounted 2 x 250 AFPL
- 77. Round Bulbhead Luminaire with recessed above mounted 2 x 250 AFPL
- 78. Round Bulbhead Luminaire with recessed above mounted 2 x 250 AFPL
- 79. Round Bulbhead Luminaire with recessed above mounted 2 x 250 AFPL
- 80. Round Bulbhead Luminaire with recessed above mounted 2 x 250 AFPL
- 81. Round Bulbhead Luminaire with recessed above mounted 2 x 250 AFPL
- 82. Round Bulbhead Luminaire with recessed above mounted 2 x 250 AFPL
- 83. Round Bulbhead Luminaire with recessed above mounted 2 x 250 AFPL
- 84. Round Bulbhead Luminaire with recessed above mounted 2 x 250 AFPL
- 85. Round Bulbhead Luminaire with recessed above mounted 2 x 250 AFPL
- 86. Round Bulbhead Luminaire with recessed above mounted 2 x 250 AFPL
- 87. Round Bulbhead Luminaire with recessed above mounted 2 x 250 AFPL
- 88. Round Bulbhead Luminaire with recessed above mounted 2 x 250 AFPL
- 89. Round Bulbhead Luminaire with recessed above mounted 2 x 250 AFPL
- 90. Round Bulbhead Luminaire with recessed above mounted 2 x 250 AFPL
- 91. Round Bulbhead Luminaire with recessed above mounted 2 x 250 AFPL
- 92. Round Bulbhead Luminaire with recessed above mounted 2 x 250 AFPL
- 93. Round Bulbhead Luminaire with recessed above mounted 2 x 250 AFPL
- 94. Round Bulbhead Luminaire with recessed above mounted 2 x 250 AFPL
- 95. Round Bulbhead Luminaire with recessed above mounted 2 x 250 AFPL
- 96. Round Bulbhead Luminaire with recessed above mounted 2 x 250 AFPL
- 97. Round Bulbhead Luminaire with recessed above mounted 2 x 250 AFPL
- 98. Round Bulbhead Luminaire with recessed above mounted 2 x 250 AFPL
- 99. Round Bulbhead Luminaire with recessed above mounted 2 x 250 AFPL
- 100. Round Bulbhead Luminaire with recessed above mounted 2 x 250 AFPL

**ELECTRICAL NOTES:**

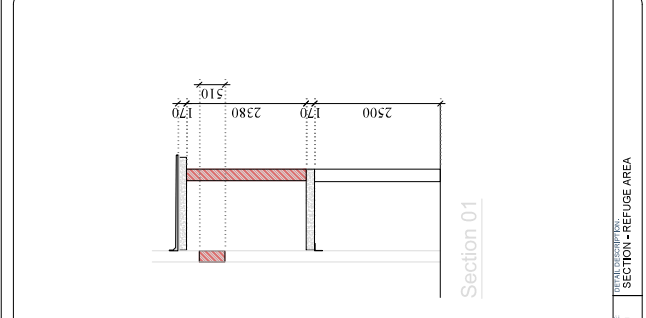
- All light switches and access control readers shall be horizontally aligned with door handles (i.e.  $\pm 1000mm$  above PFL to the top of the cover plate).
- Reader action, toggle or push-button switches shall operate in the 'ON' position.
- Light switches shall project clear of the switch plate and shall have a width of at least 10mm.
- New general purpose sockets outlets (lower points) shall be installed at a height of  $\pm 450mm$  above work top level and at least 60mm from corners.



SCALE: 1:50  
 SECTION - REFUGE AREA



SCALE: 1:50  
 UPPER GROUND FLOOR - REFUGE AREA LIGHTING LAYOUT



SCALE: 1:50  
 FIRST FLOOR - REFUGE AREA LIGHTING LAYOUT

**WORK PACKAGES: ADMIN BLOCK, REFUGE AREAS**  
 Provide lighting in new refuge areas on Ground floor and first floor.

- Lighting to refuge area - GF:
  - Supply and install wall mounted bulbhead luminaires, including all wiring, controls, boxes and light fittings.
  - Identify and make safe existing lighting circuit in the Passage. Circuit the ground floor refuge area lighting to this circuit.
- Lighting to Refuge area - FF:
  - Supply and install wall mounted surface fluorescent fitting, including all wiring, controls, boxes and light fittings.
  - Identify and make safe existing lighting circuit in the Passage. Circuit the first floor refuge area lighting to this circuit.
- All conductors for the access control and lighting shall be chased/buried into brickwork, or run in the ceiling void, unless routing is shown.
- Take load readings on the existing DB, and balance the loads across the phases.
- Test and commission the installation. Provide a Certificate of Compliance as per SANS 10182.

**Electrical Summary:**  
 Fed from: Existing lighting circuits in the passages  
 Additional Load: Ground floor - 80W  
 First floor - 50W  
 Wiring Size: Lighting: 2 x 2.5mm² phase conductors + 2.5mm² earth wire  
 Conduit Size: 20mm diameter

SCALE: 1:50  
 ADMIN REFUGE AREAS: SCHEDULE OF ELECTRICAL WORK







**GENERAL NOTES**

- ALL ELECTRICAL WORK MUST BE IN ACCORDANCE WITH THE SOUTH AFRICAN NATIONAL STANDARD (SANS) 10142-1:2012.
- THE CONTRACTOR SHALL BE RESPONSIBLE FOR OBTAINING ALL NECESSARY PERMITS AND APPROVALS FROM THE APPLICABLE AUTHORITIES.
- THE CONTRACTOR SHALL BE RESPONSIBLE FOR COORDINATING ALL WORK WITH OTHER TRADES AND SERVICES.

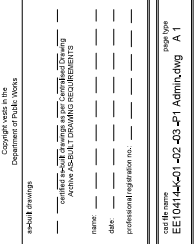
**REVISIONS**

No.	DATE	AMENDMENT	D.W./A.	J.A.
1	24.10.2020	FOR TENDER		

Copyright vests in the  
Department of Public Works

name: \_\_\_\_\_  
date: \_\_\_\_\_  
professional registration no.: \_\_\_\_\_

card file name: EE10414-K/01-403-P1 Admin.dwg A 1  
page type: \_\_\_\_\_



DIRECTOR-GENERAL  
MELISSA DONGWANA



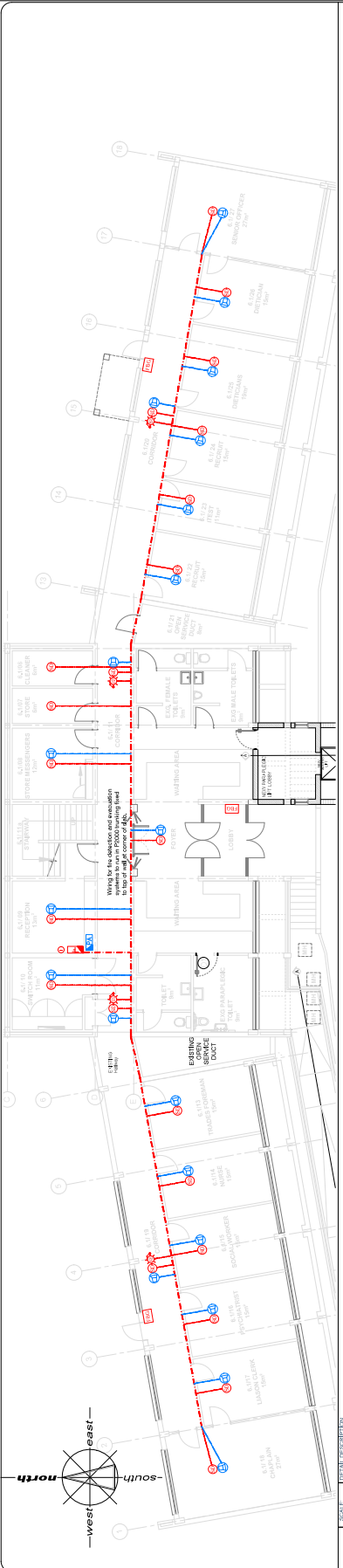
contract: BARTSCH  
service: ELECTRICAL

WESTVILLE DCs - PROVISION OF  
FACILITIES FOR THE DISABLED  
DURBAN MEDIUM PRISON, HARRY  
GWALA ROAD, WESTVILLE, 3629

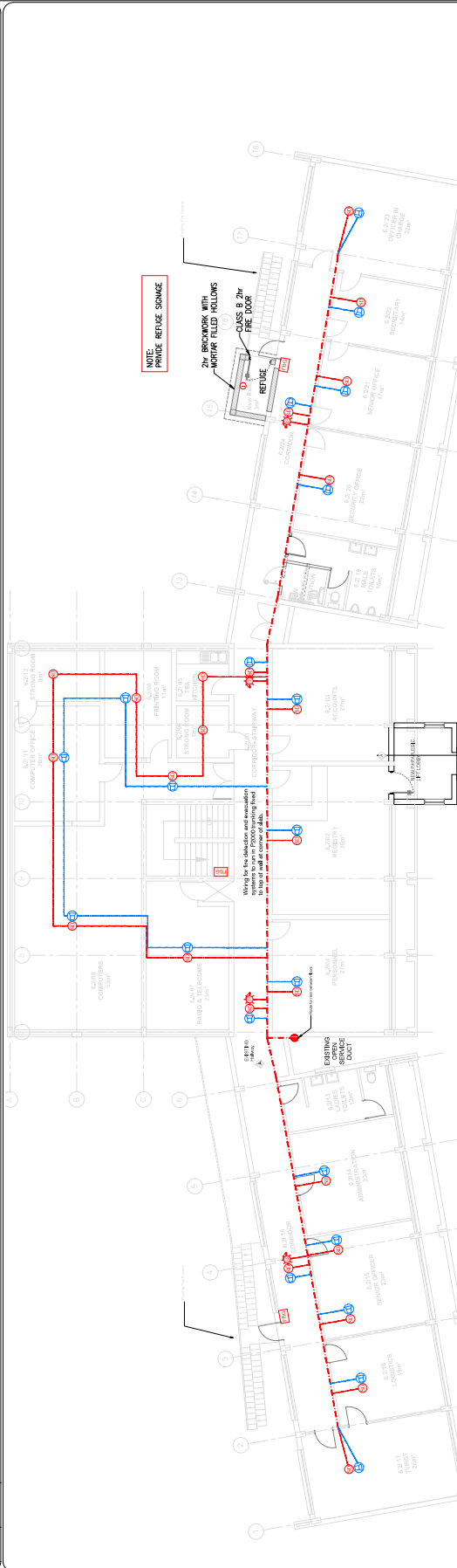
WCS number: WCS 049089  
drawing title: ADMIN BLOCK  
FIRE DETECTION INSTALLATION

reference: 3313/G/001  
scale: 1:50  
date: 24.10.2020  
drawing number: EE 10414/K/05

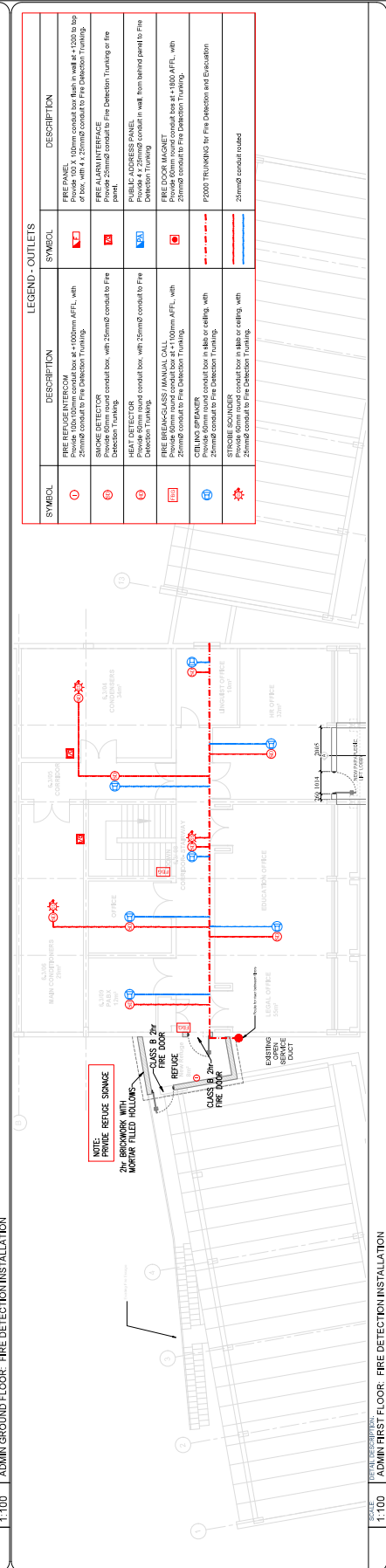
designed: J. GILLESPIE  
drawn: J. GILLESPIE  
checked: N. WATER



1:100 ADMIN LOWER GROUND FLOOR - FIRE DETECTION INSTALLATION



1:100 ADMIN GROUND FLOOR - FIRE DETECTION INSTALLATION



1:100 ADMIN FIRST FLOOR - FIRE DETECTION INSTALLATION

**LEGEND - OUTLETS**

SYMBOL	DESCRIPTION	SYMBOL	DESCRIPTION
①	FIRE REFUGER INTERCOM	⚡	FIRE PANEL
②	SMOKE DETECTOR	Ⓜ	FIRE ALARM INTERFACE
③	FIRE BREAK-GLASS (MANUAL CALL)	Ⓝ	FIRE DOOR MAGNET
④	CBR MAG SPRINKLER	Ⓞ	FD000 TRUNKING
⑤	20mmØ conduit routed	Ⓟ	20mmØ conduit routed