

ATHER TODAY

JOHANNESBURG: HIGH 25° LOW 13°



PRETORIA:

HIGH 28° LOW 17°



VEREENIGING:

HIGH 28° LOW 15°



The New Age, Monday 6/03/2017, page 5

MEC opens new school

Soshanguve East Secondary School officially opened under Gauteng's TMR programme

KUTULLO MADISHA

THE new high tech Soshanguve East Secondary School boasting top of the range learning facilities, will help ease the admission pressure in the area, education MEC Panyaza Lesufi said.

The school in Block XX Soshanguve was officially opened yesterday and is one of many schools that the department intends on opening in townships across the province each month until 2019.

Lesufi said this was part of the drive to make the Gauteng province's transformation, modernisation and re-industrialisation (TMR) strategy a reality.

MEC for infrastructure Jacob Mamabolo issued the Gauteng department of education with a certificate of completion of construction of the more than R105m state of the art facility at the opening.

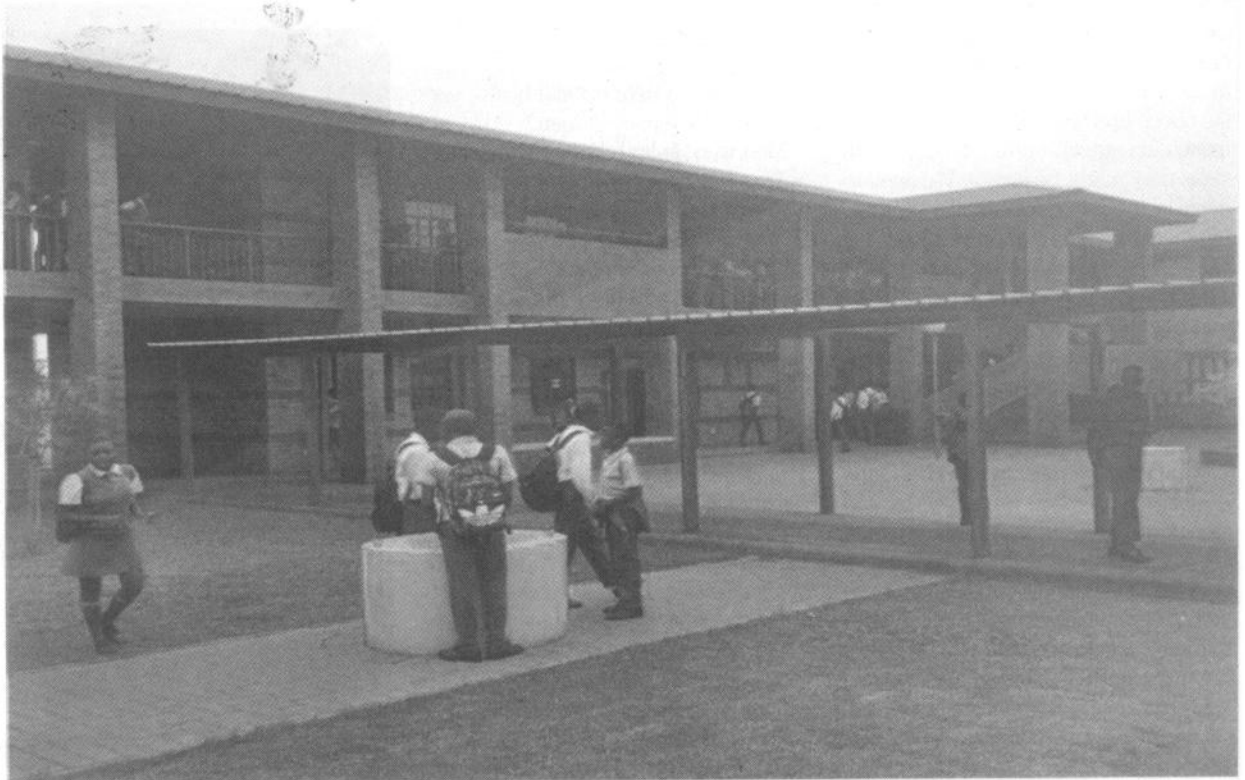
"This document certifies that the construction of the school is complete, in compliance with the department of basic education (DBE) requirements and specifications," Mamabolo said.

The school caters for about 1200 pupils from Grade 8 to Grade 12.

"The school falls in the mega school category due to its size that responds to the demand trends encountered across the province," Lesufi said.

"The provision of schools with modern facilities in townships will go a long way to improve and transform the quality of education in the townships. It will also have an economic impact and assist to stimulate the township economy."

He said his department had prioritised the introduction to technology at township schools so that pupils from



HIGH TECH: The newly opened Soshanguve East Secondary School boasts top of the range learning facilities.

these areas do not suddenly encounter technology or experience utilisation of tablets and computers for the first time at a higher education level.

"Through the investment, we are making our learners, the future gold who must develop future technology to benefit their community and take this country forward," the MEC said.

Mamabolo encouraged the community to protect the school against vandalism.

"This is your school. You have a responsibility to protect the school

and promote the smooth education of our children. Should we ever hear that the school was burnt down, we will not build you another one," Mamabolo said.

In January, the department opened the Nomzamo Madikizela Mandela Primary School in Bramfischerville, Soweto.

Both departments have opened Ga-Rankuwa, Nellmapius, Bophelong Secondary and the Winnie Madikizela-Mandela primary schools.

kutullom@thenewage.co.za

QUICK FACTS

- » 2 Science laboratories
- » 1 Computer laboratory
- » Nutrition centre with dining hall
- » Covered walkways
- » Sports facility
- » Soccer and rugby field
- » Plant room